



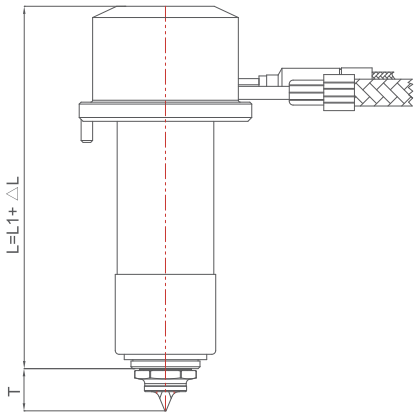
Integrated Engineering Solution



TINA GPSA TECHNICAL DATA

TINA GPSA

TINA GPSA 08 NOZZLE



备注：T值, 如右表
热嘴长度=L+T

GATE TYPE	CC/CT/OA/TAC/TOE/TLC
T	11

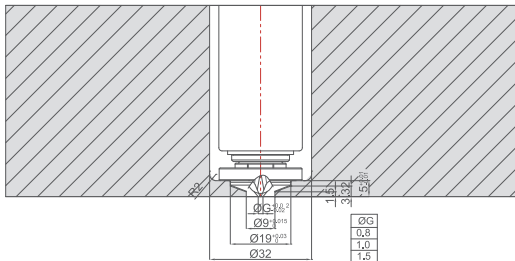
TGPSA08□□135□□
IC (J) , CA (K)
CC,TOE,TLC,TAC,CT,OA

CODE	L	Heater	T/C
TGPSA08□□085□□	74.00	HTTA22180550	NZTPIC[CA]160650
TGPSA08□□095□□	84.00	HTTA22180650	NZTPIC[CA]160850
TGPSA08□□105□□	94.00	HTTA22180750	NZTPIC[CA]160850
TGPSA08□□115□□	104.00	HTTA22180850	NZTPIC[CA]161050
TGPSA08□□125□□	114.00	HTTA22180950	NZTPIC[CA]161050
TGPSA08□□135□□	124.00	HTTA22181050	NZTPIC[CA]161250
TGPSA08□□145□□	134.00	HTTA22181150	NZTPIC[CA]161250
TGPSA08□□155□□	144.00	HTTA22181250	NZTPIC[CA]161450
TGPSA08□□165□□	154.00	HTTA22181350	NZTPIC[CA]161450
TGPSA08□□175□□	164.00	HTTA22181450	NZTPIC[CA]161650
TGPSA08□□185□□	174.00	HTTA22181550	NZTPIC[CA]161650

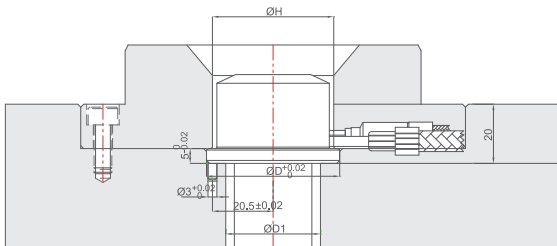
TINA GPSA

TINA GPSA 08 GATE BUSH

CA TYPE



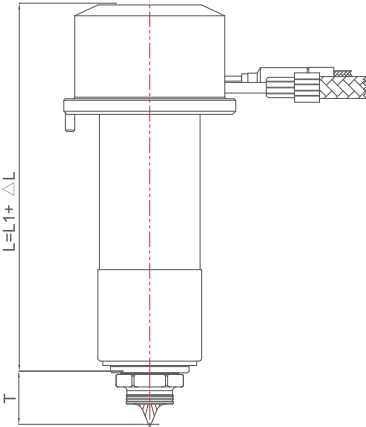
TINA GPSA 08 FLANGE



ØH	ØD	ØD1
41	45	32

TINA GPSA

TINA GPSA 10 NOZZLE



备注：T值, 如右表
喷嘴长度=L+T

GATE TYPE	CC/CT/TAC/SOE/TOE/TLC
T	17

TGPSA10□□135□□

IC (J) , CA (K)

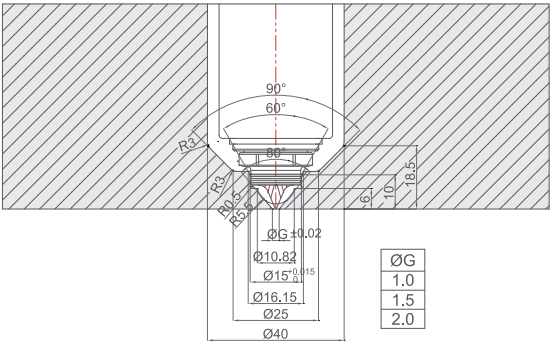
CC,TOE,TLC,TAC,CT,SOE

CODE	L	Heater	T/C
TGPSA10□□095□□	78.00	HTTA22250530	NZTPIC[CA]160850
TGPSA10□□105□□	88.00	HTTA22250630	NZTPIC[CA]160850
TGPSA10□□115□□	98.00	HTTA22250730	NZTPIC[CA]161050
TGPSA10□□125□□	108.00	HTTA22250830	NZTPIC[CA]161050
TGPSA10□□135□□	118.00	HTTA22250930	NZTPIC[CA]161250
TGPSA10□□145□□	128.00	HTTA22251030	NZTPIC[CA]161250
TGPSA10□□155□□	138.00	HTTA22251130	NZTPIC[CA]161450
TGPSA10□□165□□	148.00	HTTA22251230	NZTPIC[CA]161450
TGPSA10□□175□□	158.00	HTTA22251330	NZTPIC[CA]161650
TGPSA10□□185□□	168.00	HTTA22251430	NZTPIC[CA]161650

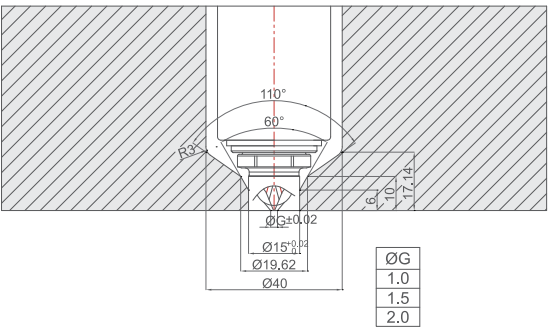
TINA GPSA

TINA GPSA 10 GATE

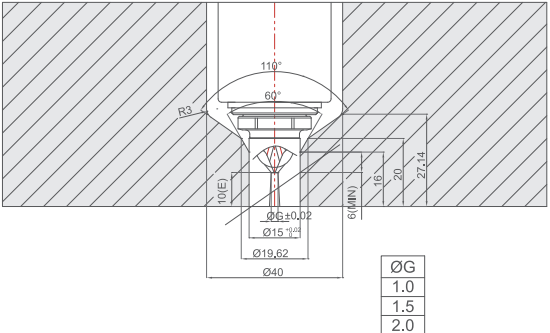
CC



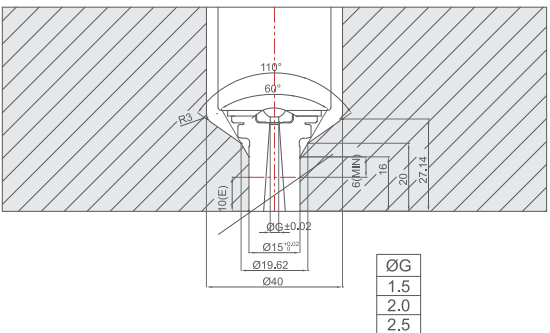
TAC



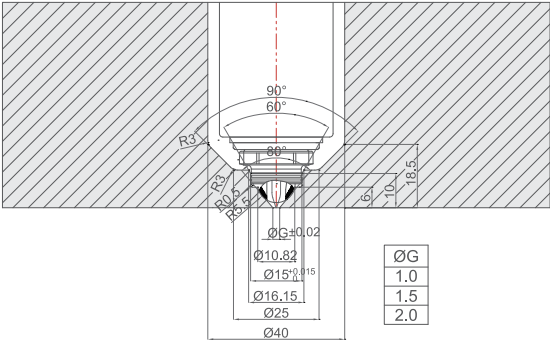
TLC



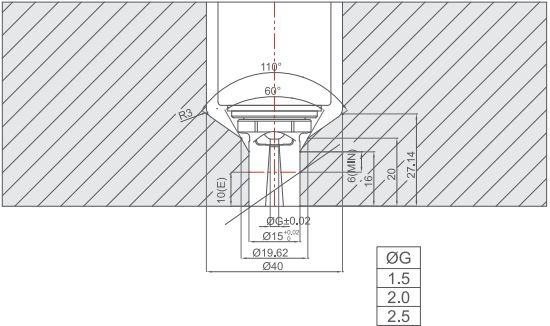
TOE



CT



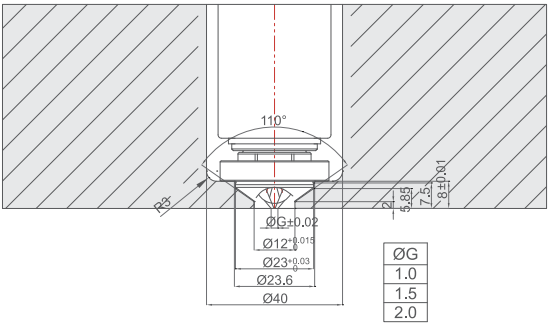
SOE



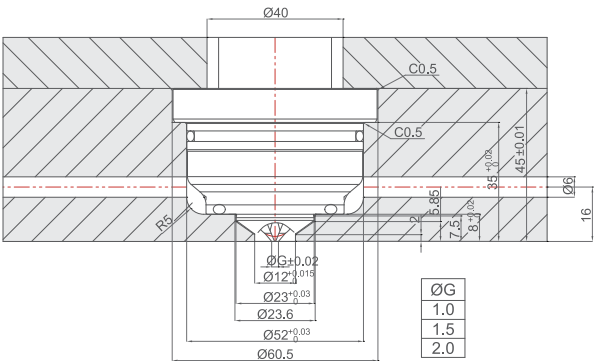
TINA GPSA

TINA GPSA 10 GATE BUSH

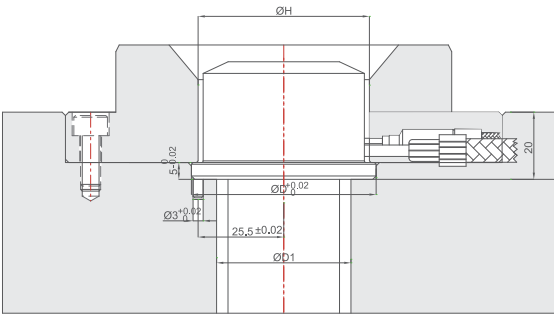
CA TYPE



LCF TYPE



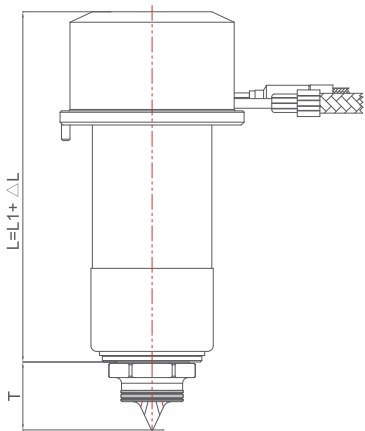
TINA GPSA 10 FLANGE



ØH	ØD	ØD1
51	55	40

TINA GPSA

TINA GPSA 15 NOZZLE



备注：T值, 如右表
喷嘴长度=L+T

GATE TYPE	CC/CT/TAC/TOE/SOE/TLC
T	24

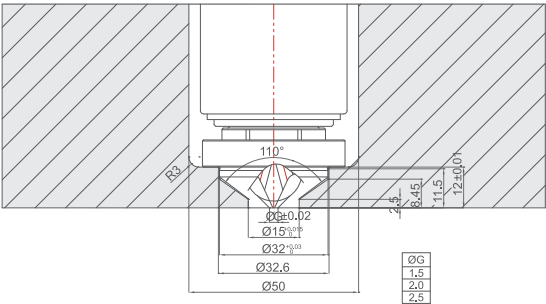
TGPSA15□□130□□
IC (J) - CA (K)
CC,TOE,TLC,TAC,CT,SOE

CODE	L	Heater	T/C
TGPSA15□□120□□	96.00	HTTA22350680	NZTPIC[CA]161050
TGPSA15□□130□□	106.00	HTTA22350780	NZTPIC[CA]161050
TGPSA15□□140□□	116.00	HTTA22350880	NZTPIC[CA]161250
TGPSA15□□150□□	126.00	HTTA22350980	NZTPIC[CA]161250
TGPSA15□□160□□	136.00	HTTA22351080	NZTPIC[CA]161450
TGPSA15□□170□□	146.00	HTTA22351180	NZTPIC[CA]161450
TGPSA15□□180□□	156.00	HTTA22351280	NZTPIC[CA]161650
TGPSA15□□190□□	166.00	HTTA22351380	NZTPIC[CA]161650
TGPSA15□□200□□	176.00	HTTA22351480	NZTPIC[CA]161850
TGPSA15□□210□□	186.00	HTTA22351580	NZTPIC[CA]161850

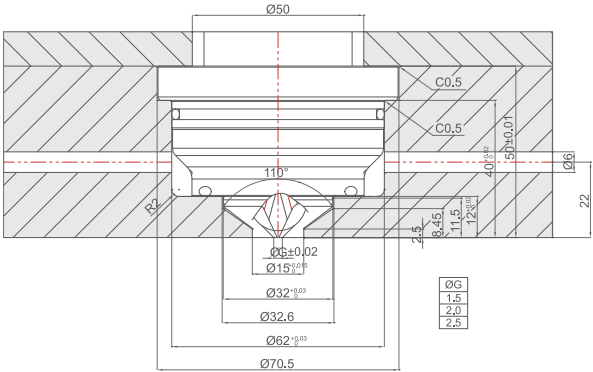
TINA GPSA

TINA GPSA 15 GATE BUSH

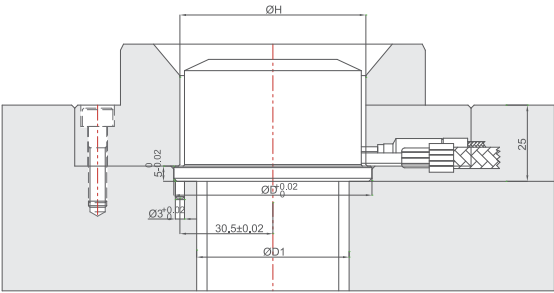
CA TYPE



LCF TYPE



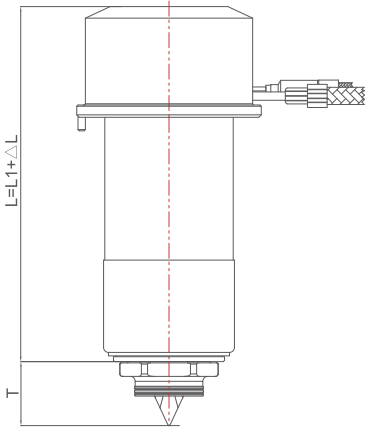
TINA GPSA 15 FLANGE



ØH	ØD	ØD1
61	65	50

TINA GPSA

TINA GPSA 22 NOZZLE



备注：T值，如右表
喷嘴长度=L+T

GATE TYPE	CC/CT/TAG/TOE/SOE/TLC
T	26

TGPSA22□□135□□
IC (J) - CA (K)
CC,TOE,TLC,TAG,CT,SOE

CODE	L	Heater	T/C
TGPSA22□□125□□	99.00	HTTA22450730	NZTPIC[CA]161050
TGPSA22□□135□□	109.00	HTTA22450830	NZTPIC[CA]161050
TGPSA22□□145□□	119.00	HTTA22450930	NZTPIC[CA]161250
TGPSA22□□155□□	129.00	HTTA22451030	NZTPIC[CA]161250
TGPSA22□□165□□	139.00	HTTA22451130	NZTPIC[CA]161450
TGPSA22□□175□□	149.00	HTTA22451230	NZTPIC[CA]161450
TGPSA22□□185□□	159.00	HTTA22451330	NZTPIC[CA]161650
TGPSA22□□195□□	169.00	HTTA22451430	NZTPIC[CA]161650
TGPSA22□□205□□	179.00	HTTA22451530	NZTPIC[CA]161850
TGPSA22□□215□□	189.00	HTTA22451630	NZTPIC[CA]161850

