

YUDO®

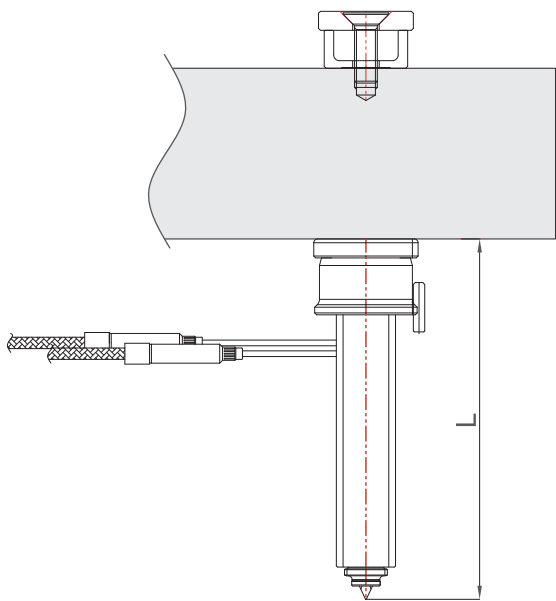
Integrated Engineering Solution



TINA MC Technical Data

TINA MC

TINA MC 05 NOZZLE

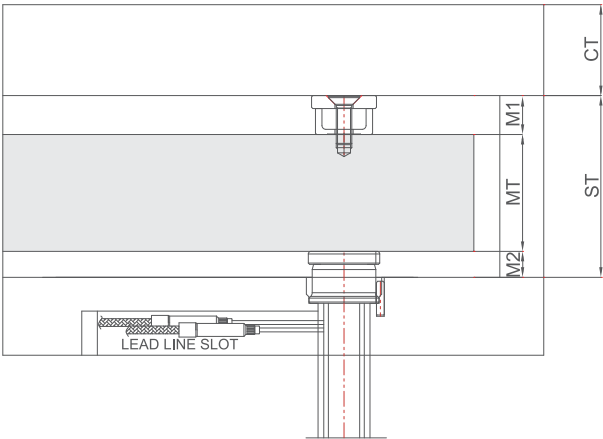


TMC05□□155□□
IC (J) , CA (K)
VV,CC,TOE,TLC,TAC

CODE	L	Cu-Heater	Heater	T/C
TMC05□□065□□	065	HTCU05160451(s)	HTLH18150CN1	NZTPIC[CA]101950
TMC05□□075□□	075	HTCU05160551(s)	HTLH18150CN1	NZTPIC[CA]101950
TMC05□□085□□	085	HTCU05160651(s)	HTLH18200CN1	NZTPIC[CA]102350
TMC05□□095□□	095	HTCU05160751(s)	HTLH18300CN1	NZTPIC[CA]103350
TMC05□□105□□	105	HTCU05160851(s)	HTLH18300CN1	NZTPIC[CA]103350
TMC05□□115□□	115	HTCU05160951(s)	HTLH18300CN1	NZTPIC[CA]103350
TMC05□□125□□	125	HTCU05161051(s)	HTLH18350CN1	NZTPIC[CA]104150
TMC05□□135□□	135	HTCU05161151(s)	HTLH18350CN1	NZTPIC[CA]104150
TMC05□□145□□	145	HTCU05161251(s)	HTLH18350CN1	NZTPIC[CA]104150
TMC05□□155□□	155	HTCU05161351(s)	HTLH18400CN1	NZTPIC[CA]104150

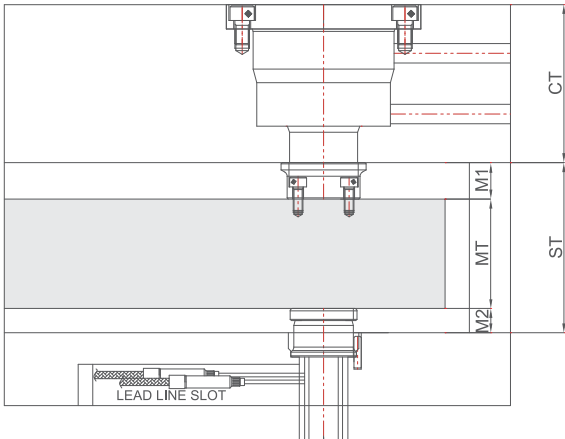
TINA MC

TINA MC 05 OPEN SYSTEM



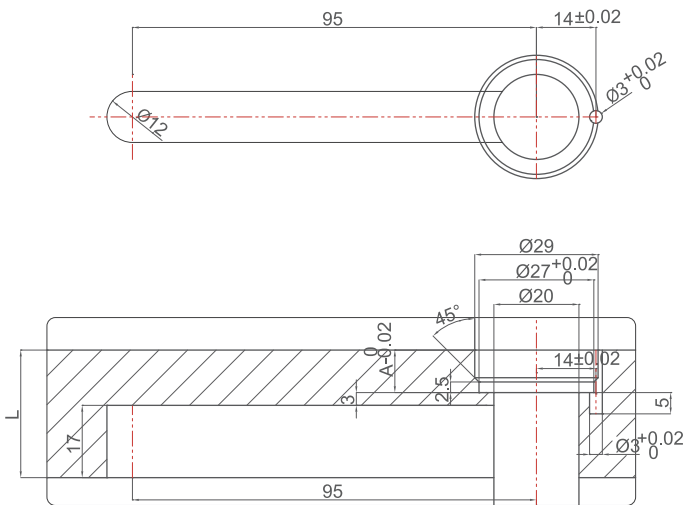
CT[MIN]	ST	MT	M1	M2
35	70~	45	15	10

TINA MC 05 VALVE SYSTEM



CT[MIN]	ST	MT	M1	M2
65~	70~	45	15	10

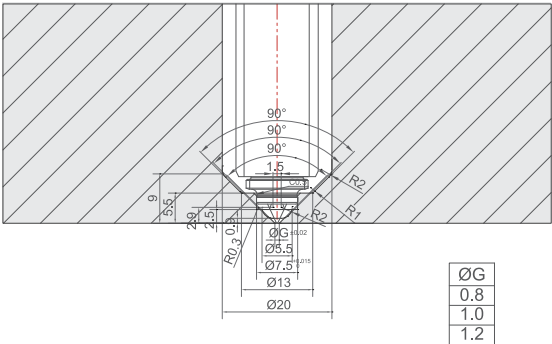
TINA MC 05 FLANGE



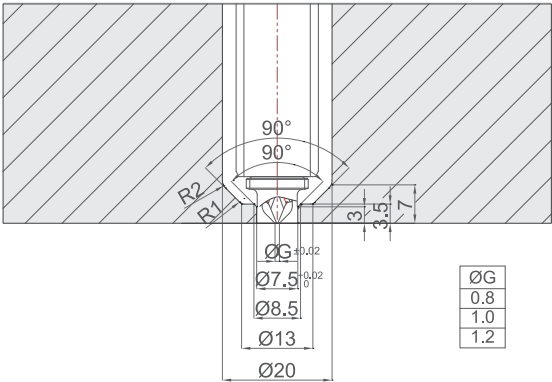
TINA MC

TINA MC 05 OPEN GATE

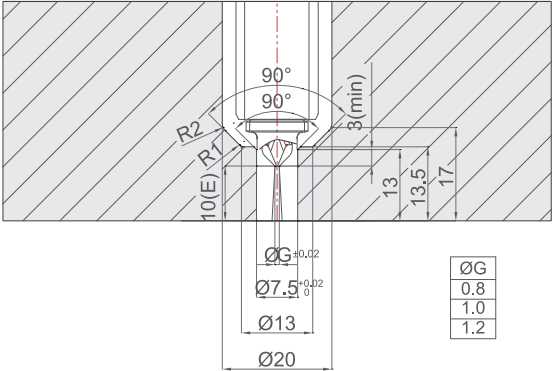
CC



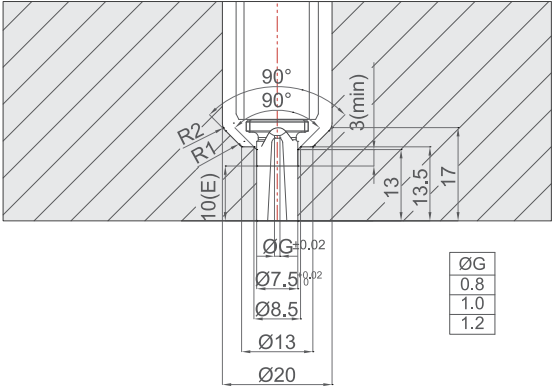
TAC



TLC



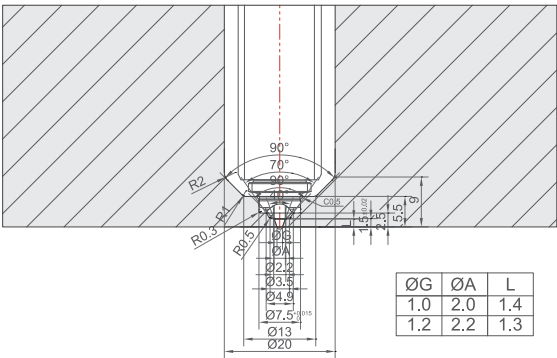
TOE



TINA MC

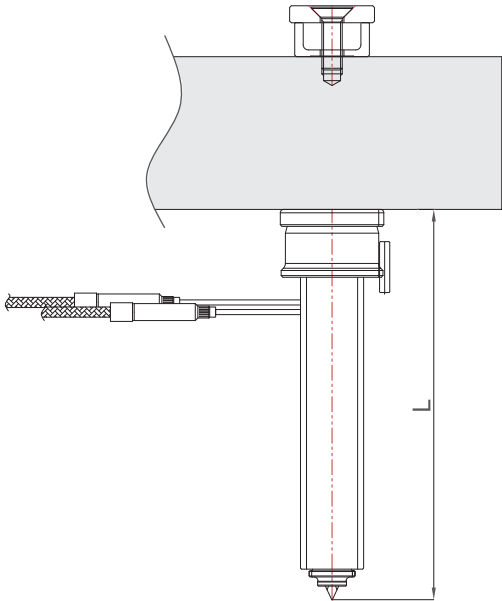
TINA MC 05 VALVE GATE

VV



TINA MC

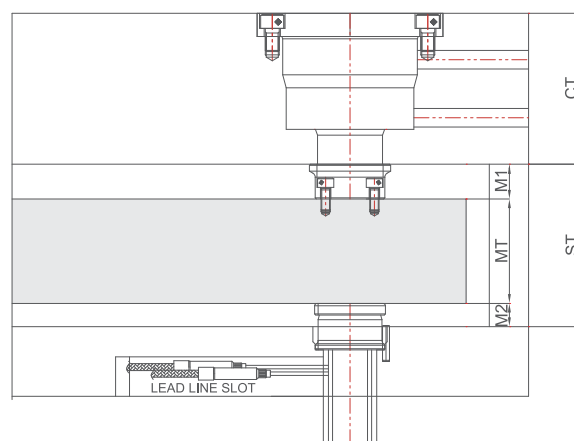
TINA MC 06 NOZZLE



TMC06□□155□□
IC (J) , CA (K)
VV,CC,TOE,TLC,TAC,CT,

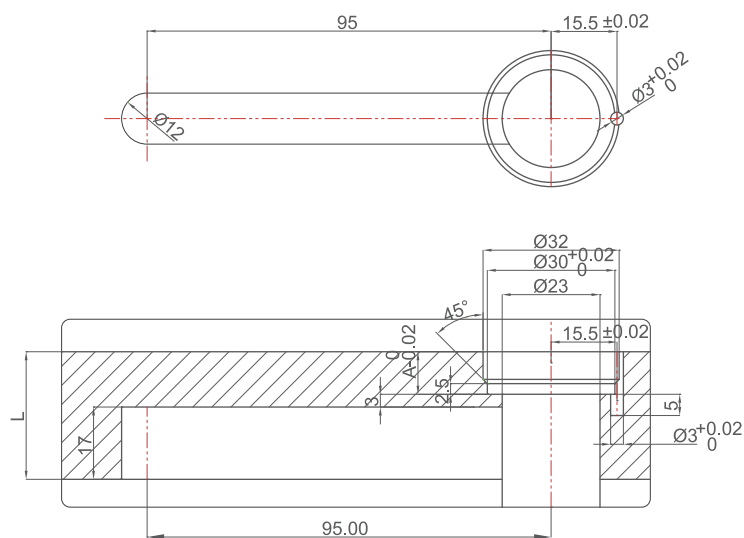
CODE	L	Cu-Heater	Heater	T/C
TMC08□□065□□	065	HTCU06190451(s)	HTLH18150CN1	NZTPIC[CA]101750
TMC08□□075□□	075	HTCU06190551(s)	HTLH18200CN1	NZTPIC[CA]102150
TMC08□□085□□	085	HTCU06190651(s)	HTLH18300CN1	NZTPIC[CA]103350
TMC08□□095□□	095	HTCU06190751(s)	HTLH18300CN1	NZTPIC[CA]103350
TMC08□□105□□	105	HTCU06190851(s)	HTLH18350CN1	NZTPIC[CA]104150
TMC08□□115□□	115	HTCU06190951(s)	HTLH18350CN1	NZTPIC[CA]104150
TMC08□□125□□	125	HTCU06191051(s)	HTLH18400CN1	NZTPIC[CA]104150
TMC08□□135□□	135	HTCU06191151(s)	HTLH18400CN1	NZTPIC[CA]104150
TMC08□□145□□	145	HTCU06191251(s)	HTLH18400CN1	NZTPIC[CA]104150
TMC08□□155□□	155	HTCU06191351(s)	HTLH18400CN1	NZTPIC[CA]104150
TMC08□□165□□	165	HTCU06191451(s)	HTLH18400CN1	NZTPIC[CA]104150
TMC08□□175□□	175	HTCU06191551(s)	HTLH18450CN1	NZTPIC[CA]104750
TMC08□□185□□	185	HTCU06191651(s)	HTLH18450CN1	NZTPIC[CA]104750

TINA MC 06 VALVE SYSTEM

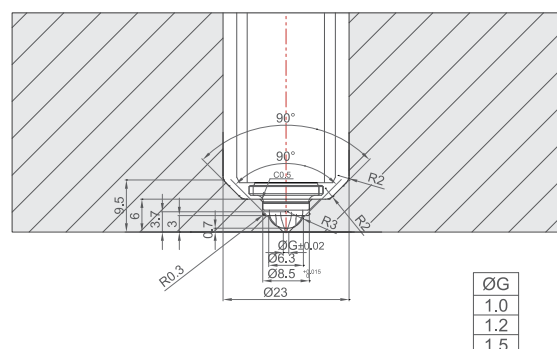


CT[MIN]	ST	MT	M1	M2
65~	70~	45	15	10

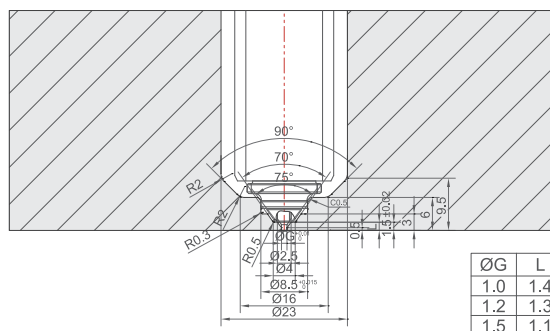
TINA MC 06 FLANGE



CC

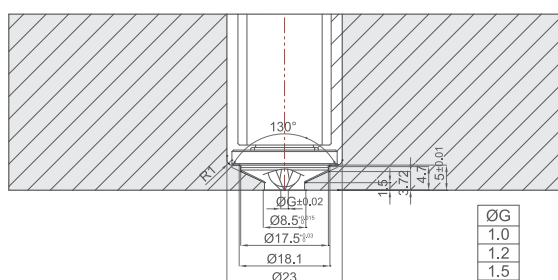


W

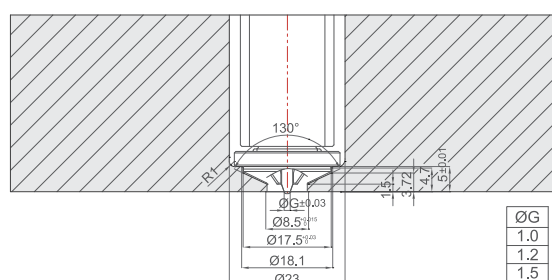


TINA MC 06 VALVE SYSTEM

CA TYPE

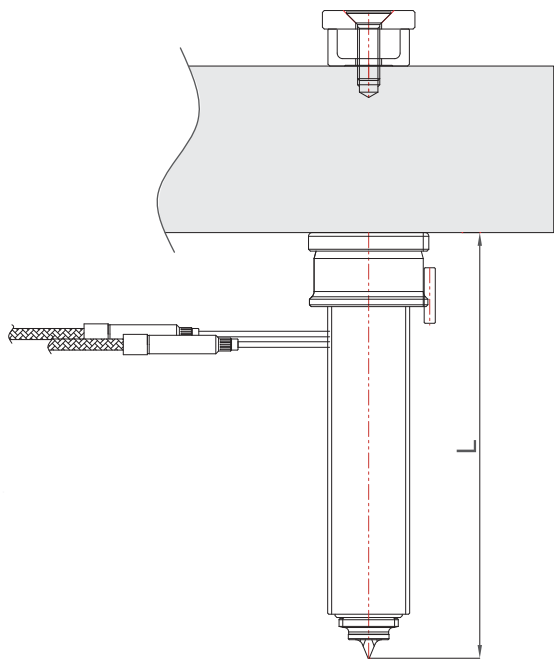


VA TYPE



TINA MC

TINA MC 08 NOZZLE

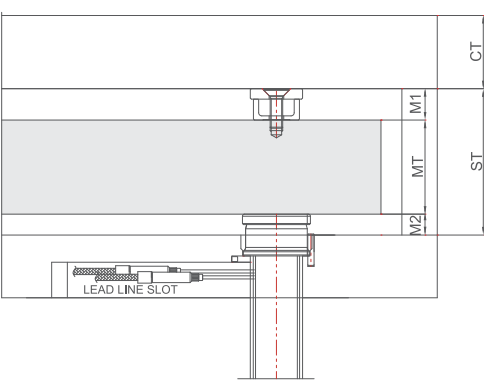


TMC08□□155□□
└── G: IC (J) , CA (K)
 └── VV,CC,TOE,TLC,TAC,CT,OA

CODE	L	Cu-Heater	Heater	T/C
TMC08□□065□□	065	HTCU08220431(s)	HTLH18150CN1	NZTPIC[CA]101550
TMC08□□075□□	075	HTCU08220531(s)	HTLH18250CN1	NZTPIC[CA]102550
TMC08□□085□□	085	HTCU08220631(s)	HTLH18350CN1	NZTPIC[CA]104150
TMC08□□095□□	095	HTCU08220731(s)	HTLH18350CN1	NZTPIC[CA]104150
TMC08□□105□□	105	HTCU08220831(s)	HTLH18400CN1	NZTPIC[CA]104150
TMC08□□115□□	115	HTCU08220931(s)	HTLH18450CN1	NZTPIC[CA]104550
TMC08□□125□□	125	HTCU08221031(s)	HTLH18450CN1	NZTPIC[CA]104550
TMC08□□135□□	135	HTCU08221131(s)	HTLH18450CN1	NZTPIC[CA]104550
TMC08□□145□□	145	HTCU08221231(s)	HTLH18450CN1	NZTPIC[CA]104550
TMC08□□155□□	155	HTCU08221331(s)	HTLH18500CN1	NZTPIC[CA]104950
TMC08□□165□□	165	HTCU08221431(s)	HTLH18500CN1	NZTPIC[CA]104950
TMC08□□175□□	175	HTCU08221531(s)	HTLH18500CN1	NZTPIC[CA]104950
TMC08□□185□□	185	HTCU08221631(s)	HTLH18500CN1	NZTPIC[CA]104950

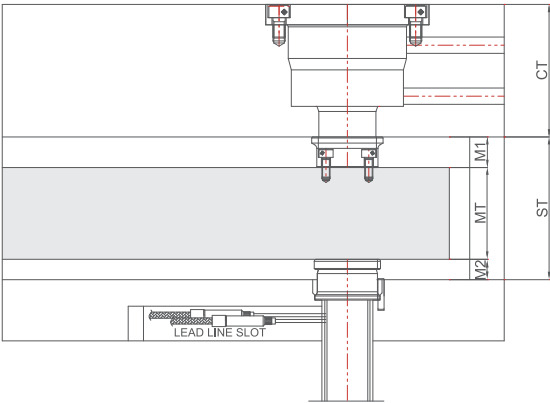
TINA MC

TINA MC 08 OPEN SYSTEM



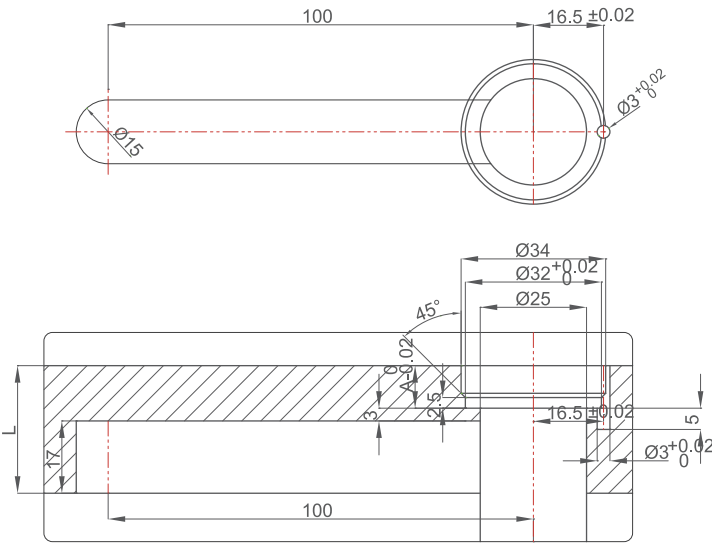
CT[MIN]	ST	MT	M1	M2
35~	70~	45	15	10

TINA MC 08 VALVE SYSTEM



CT[MIN]	ST	MT	M1	M2
65~	70~	45	15	10

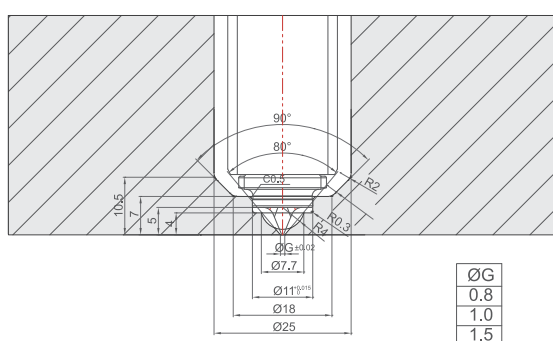
TINA MC 08 FLANGE



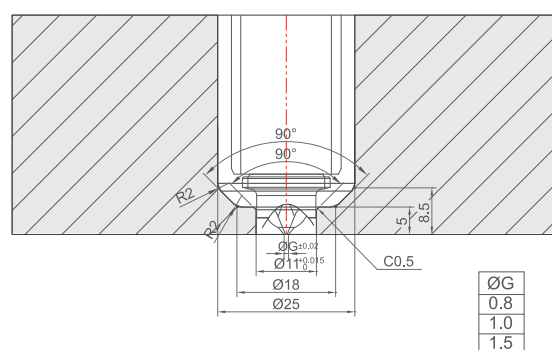
TINA MC

TINA MC 08 OPEN GATE

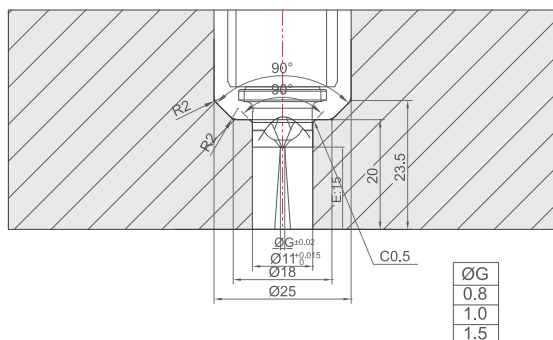
CC



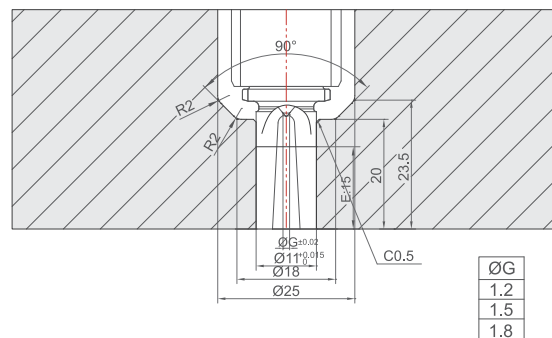
TAC



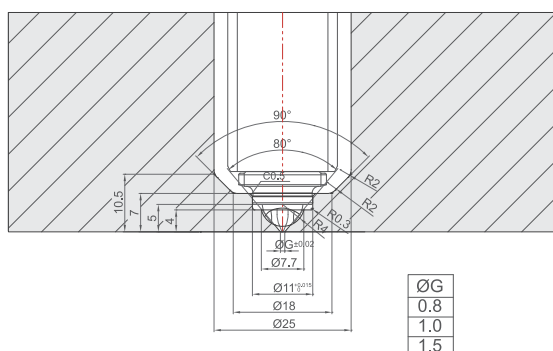
TLC



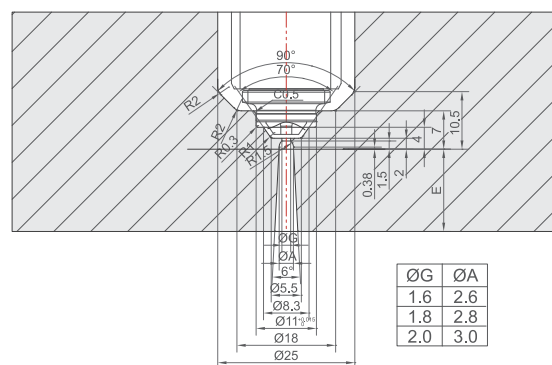
TOE



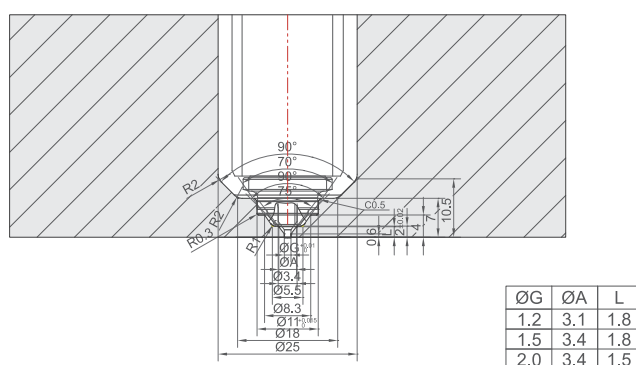
CT



OA

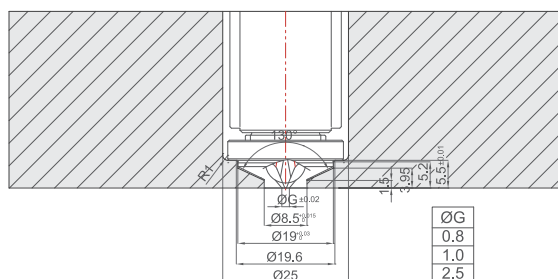


w

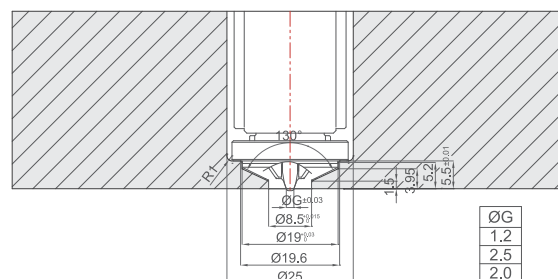


TINA MC 08 VALVE SYSTEM

CA TYPE

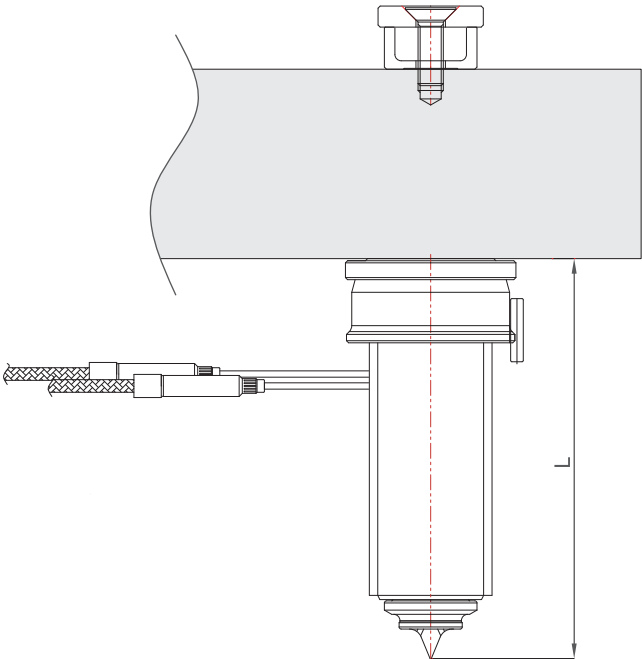


VA TYPE



TINA MC

TINA MC 10 NOZZLE

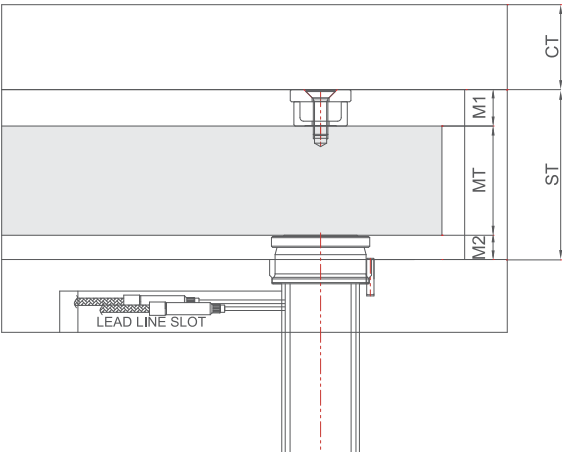


TMC10□□155□□
IC (J) , CA (K)
VV,CC,TOE,TLC,TAC,CT,OA

CODE	L	Cu-Heater	Heater	T/C
TMC10□□065□□	065	HTCU10290401(s)	HTLH18200CN1	NZTPIC[CA]101950
TMC10□□075□□	075	HTCU10290501(s)	HTLH18300CN1	NZTPIC[CA]102950
TMC10□□085□□	085	HTCU10290601(s)	HTLH18400CN1	NZTPIC[CA]104150
TMC10□□095□□	095	HTCU10290701(s)	HTLH18450CN1	NZTPIC[CA]104550
TMC10□□105□□	105	HTCU10290801(s)	HTLH18500CN1	NZTPIC[CA]104950
TMC10□□115□□	115	HTCU10290901(s)	HTLH18550CN1	NZTPIC[CA]105750
TMC10□□125□□	125	HTCU10291001(s)	HTLH18550CN1	NZTPIC[CA]105750
TMC10□□135□□	135	HTCU10291101(s)	HTLH18550CN1	NZTPIC[CA]105750
TMC10□□145□□	145	HTCU10291201(s)	HTLH18600CN1	NZTPIC[CA]106550
TMC10□□155□□	155	HTCU10291301(s)	HTLH18600CN1	NZTPIC[CA]106550
TMC10□□165□□	165	HTCU10291401(s)	HTLH18600CN1	NZTPIC[CA]106550
TMC10□□175□□	175	HTCU10291501(s)	HTLH18650CN1	NZTPIC[CA]106550
TMC10□□185□□	185	HTCU10291601(s)	HTLH18650CN1	NZTPIC[CA]106550

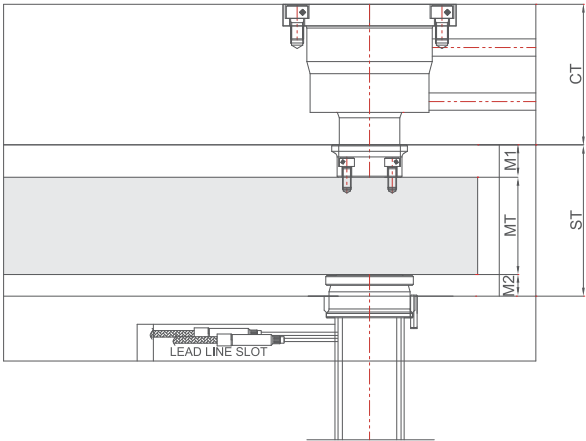
TINA MC

TINA MC 10 OPEN SYSTEM



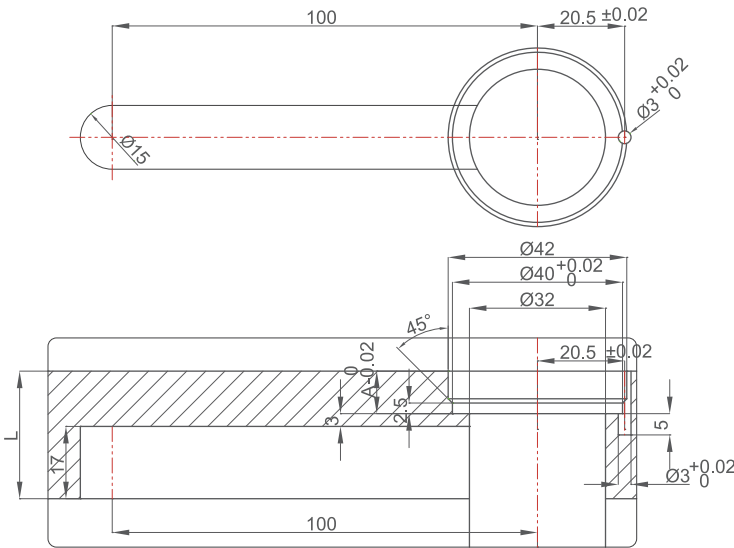
CT[MIN]	ST	MT	M1	M2
35	70~	45	15	10

TINA MC 10 VALVE SYSTEM



CT[MIN]	ST	MT	M1	M2
65~	70~	45	15	10

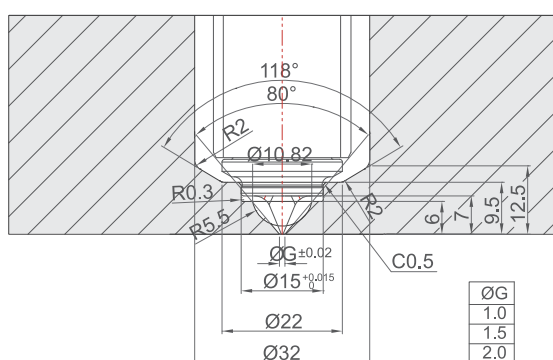
TINA MC 10 FLANGE



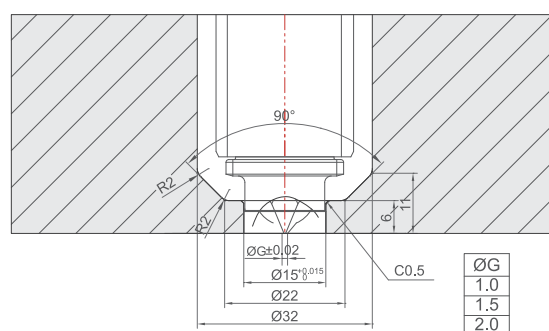
TINA MC

TINA MC 10 OPEN GATE

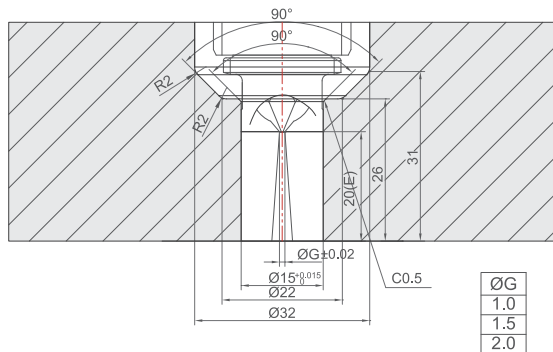
CC



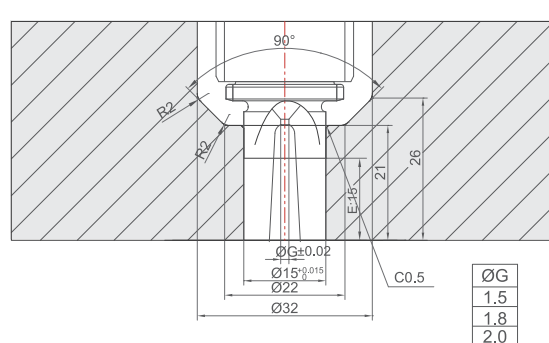
TAC



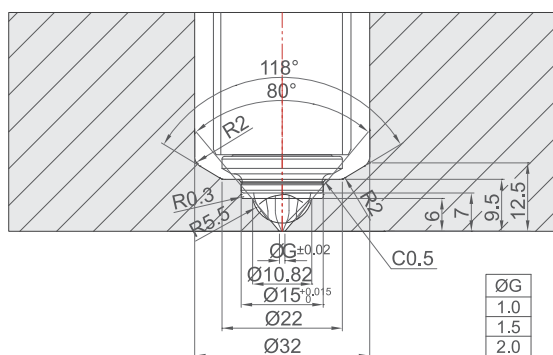
TLC



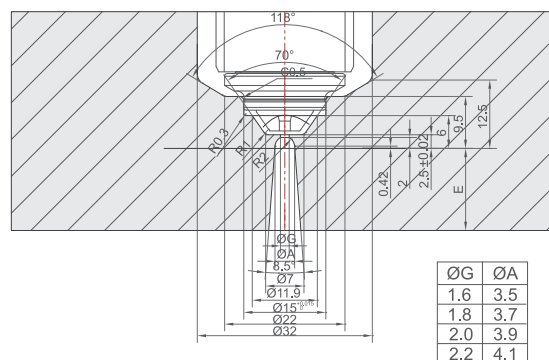
TOE



CT



OA



ØG	ØA	L
1.5	2.7	1.6
2.0	3.4	2.0
2.5	4.2	2.4

ØG	L
1.5	2.3
2.0	2.0
2.5	1.6

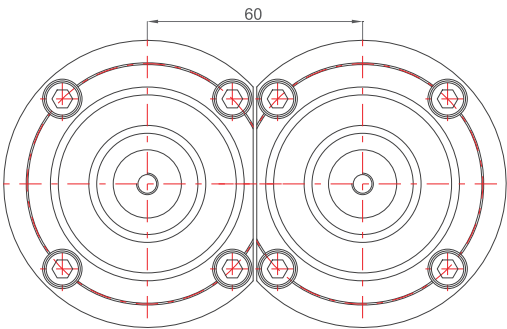
ØG
1.0
1.5
2.0

ØG
1.5
2.0
2.5

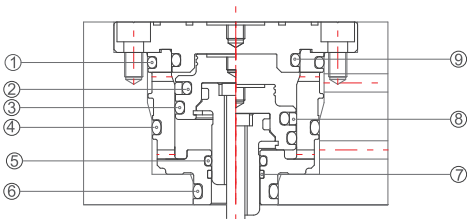
VC 58 Pneumatic Cylinder

VC 58

Minimum Pitch and O-ring reference

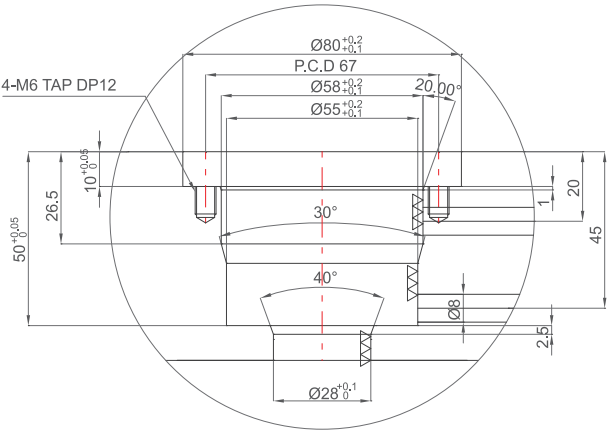


缸距最小60mm



1	ACRRAV352260
2	ACRRAV352160
3	ACRRAV352190
4	ACRRAV252250
5	ACRRAV261140
6	ACRRAV352120
7	ACRIWR241550
8	ACRGSO440400
9	ACRRAV352210

Machining Demension



VC58 CYLINDER

阀针控制 Reference		
驱动介质 Media	空气 Air	
驱动压力 Pressure	8bar~10bar	
流速 Velocity	20 L/min	
反应时间 Reaction Time	0.5s	
阀针行程 Pin Stroke	10mm	

