

# YUDO®

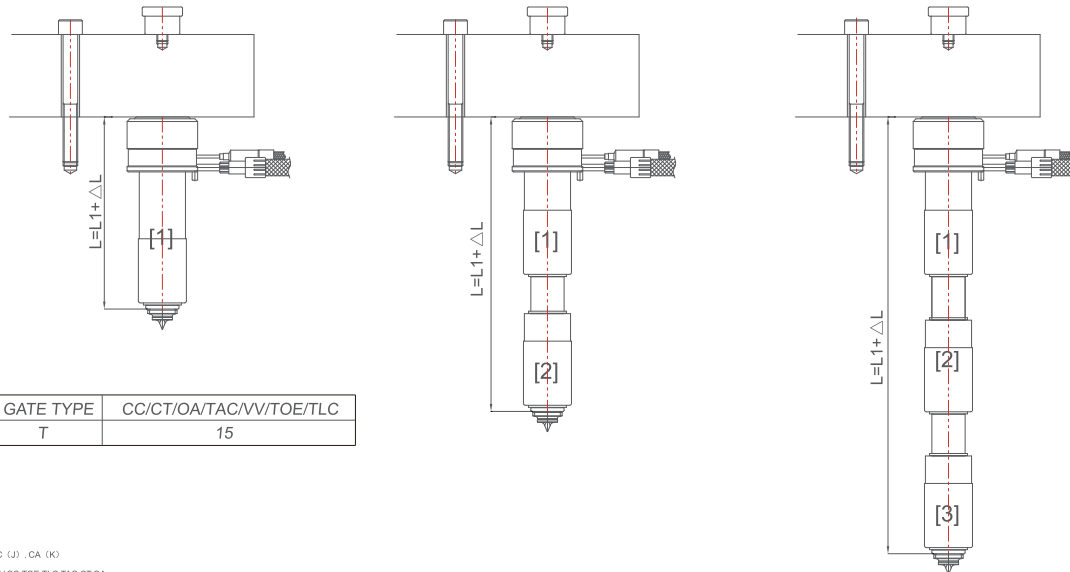
*Integrated Engineering Solution*



TINA GP Technical Data

# TINA GP

## TINA GP 08 NOZZLE

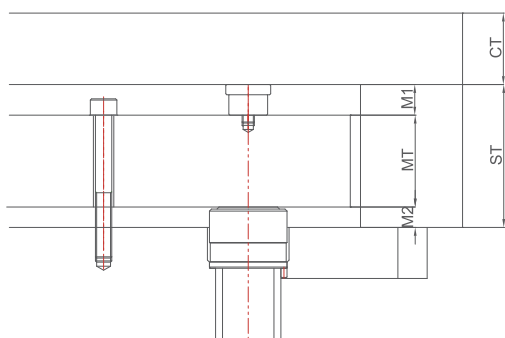


TGP08□□155□□  
IC (J) , CA (K)  
VV,CC,TOE,TLC,TAC,CT,OA

CODE	L	Heater-1	TC-1	Heater-2	TC-2	Heater-3	TC-3
		Code	Code	Code	Code	Code	Code
TGP08□□075□□	56.01 - 66.03	HTTA22180350	NZTP[CA,IC]160850				
TGP08□□085□□	66.04 - 76.05	HTTA22180450	NZTP[CA,IC]160850				
TGP08□□095□□	76.06 - 86.07	HTTA22180550	NZTP[CA,IC]161050				
TGP08□□105□□	86.08 - 96.10	HTTA22180650	NZTP[CA,IC]161050				
TGP08□□115□□	96.11 - 106.12	HTTA22180750	NZTP[CA,IC]161250				
TGP08□□125□□	106.13 - 116.15	HTTA22180850	NZTP[CA,IC]161250				
TGP08□□135□□	116.16 - 126.17	HTTA22180950	NZTP[CA,IC]161450				
TGP08□□145□□	126.18 - 136.19	HTTA22181050	NZTP[CA,IC]161450				
TGP08□□155□□	136.20 - 146.22	HTTA22181150	NZTP[CA,IC]161650				
TGP08□□165□□	146.23 - 156.24	HTTA22181250	NZTP[CA,IC]161650				
TGP08□□175□□	156.25 - 166.27	HTTA22181350	NZTP[CA,IC]161850				
TGP08□□185□□	166.28 - 176.29	HTTA22181450	NZTP[CA,IC]161850				
TGP08□□195□□	176.30 - 186.82	HTTA22181550	NZTP[CA,IC]162050				
TGP08□□205□□	186.83 - 196.84	HTTB22180850	NZTP[CA,IC]160850	HTTG22180550	NZTP[CA,IC]160850		
TGP08□□215□□	196.85 - 206.86	HTTB22180950	NZTP[CA,IC]161050	HTTG22180550	NZTP[CA,IC]160850		
TGP08□□225□□	206.87 - 216.89	HTTB22181050	NZTP[CA,IC]161050	HTTG22180550	NZTP[CA,IC]160850		
TGP08□□235□□	216.90 - 226.91	HTTB22181150	NZTP[CA,IC]161050	HTTG22180550	NZTP[CA,IC]160850		
TGP08□□245□□	226.92 - 236.94	HTTB22181250	NZTP[CA,IC]161050	HTTG22180550	NZTP[CA,IC]160850		
TGP08□□255□□	236.95 - 246.96	HTTB22181350	NZTP[CA,IC]161250	HTTG22180550	NZTP[CA,IC]160850		
TGP08□□265□□	246.97 - 256.98	HTTB22181450	NZTP[CA,IC]161250	HTTG22180550	NZTP[CA,IC]160850		
TGP08□□275□□	256.99 - 267.01	HTTB22181550	NZTP[CA,IC]161250	HTTG22180550	NZTP[CA,IC]160850		
TGP08□□285□□	267.02 - 277.53	HTTB22181650	NZTP[CA,IC]161250	HTTG22180550	NZTP[CA,IC]160850		
TGP08□□295□□	277.54 - 287.56	HTTB22180650	NZTP[CA,IC]160850	HTTC22180850	NZTP[CA,IC]161050	HTTG22180550	NZTP[CA,IC]160850
TGP08□□305□□	287.57 - 297.58	HTTB22180750	NZTP[CA,IC]160850	HTTC22180850	NZTP[CA,IC]161050	HTTG22180550	NZTP[CA,IC]160850
TGP08□□315□□	297.59 - 307.61	HTTB22180850	NZTP[CA,IC]160850	HTTC22180850	NZTP[CA,IC]161050	HTTG22180550	NZTP[CA,IC]160850
TGP08□□325□□	307.62 - 317.63	HTTB22180950	NZTP[CA,IC]161050	HTTC22180850	NZTP[CA,IC]161050	HTTG22180550	NZTP[CA,IC]160850
TGP08□□335□□	317.64 - 327.65	HTTB22181050	NZTP[CA,IC]161050	HTTC22180850	NZTP[CA,IC]161050	HTTG22180550	NZTP[CA,IC]160850
TGP08□□345□□	327.66 - 337.68	HTTB22181150	NZTP[CA,IC]161050	HTTC22180850	NZTP[CA,IC]161050	HTTG22180550	NZTP[CA,IC]160850
TGP08□□355□□	337.69 - 347.70	HTTB22181250	NZTP[CA,IC]161050	HTTC22180850	NZTP[CA,IC]161050	HTTG22180550	NZTP[CA,IC]160850
TGP08□□365□□	347.71 - 357.73	HTTB22181350	NZTP[CA,IC]161250	HTTC22180850	NZTP[CA,IC]161050	HTTG22180550	NZTP[CA,IC]160850
TGP08□□375□□	357.74 - 367.75	HTTB22181450	NZTP[CA,IC]161250	HTTC22180850	NZTP[CA,IC]161050	HTTG22180550	NZTP[CA,IC]160850
TGP08□□385□□	367.76 - 377.77	HTTB22181550	NZTP[CA,IC]161250	HTTC22180850	NZTP[CA,IC]161050	HTTG22180550	NZTP[CA,IC]160850

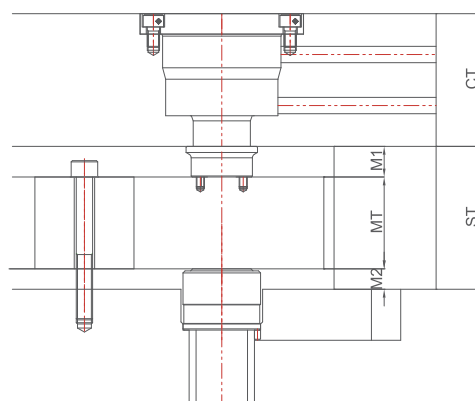
## TINA GP

### TINA GP 08 OPEN SYSTEM



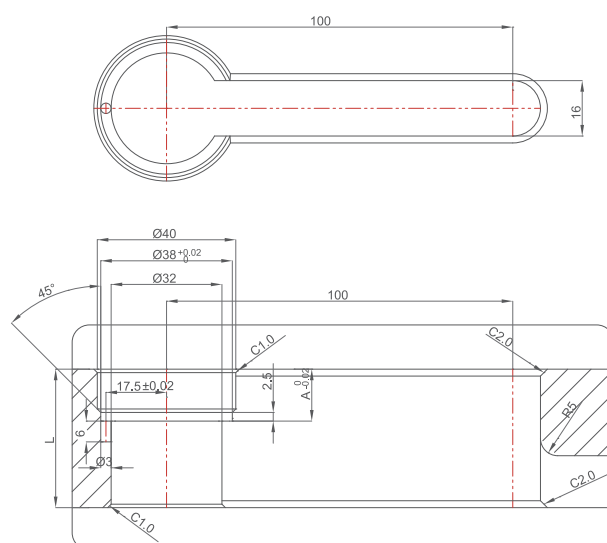
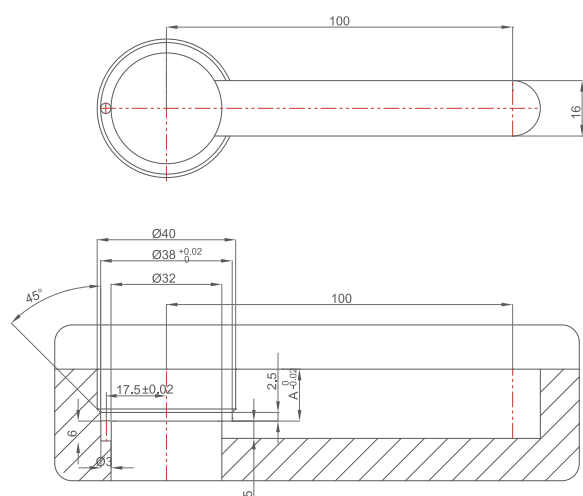
CT[MIN]	ST	MT	M1	M2
35~	70~	45	15	10

### TINA GP 08 VALVE SYSTEM

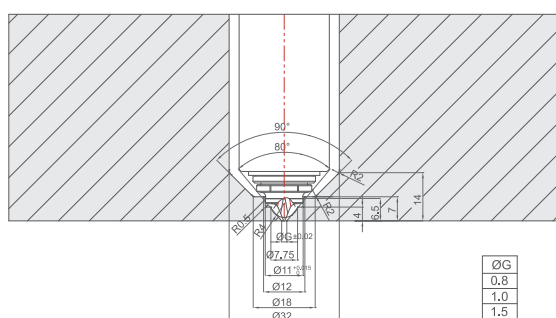


CT[MIN]	ST	MT	M1	M2
65~	70~	45	15	10

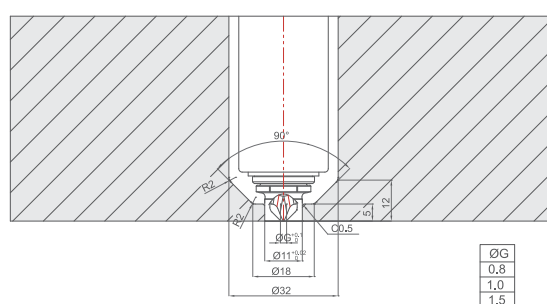
### TINA GP 08 FLANGE



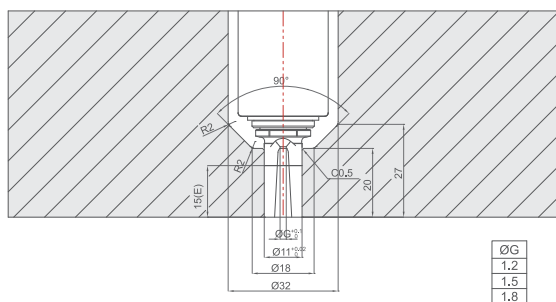
## CC



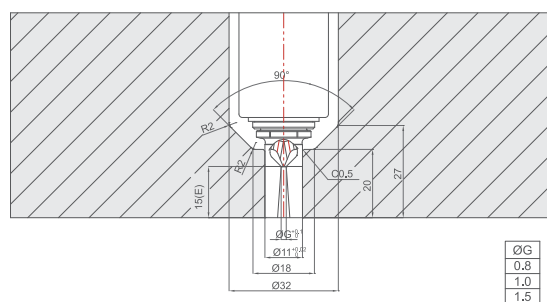
TAC



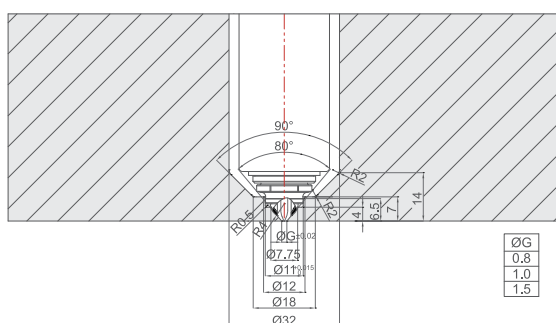
TLC



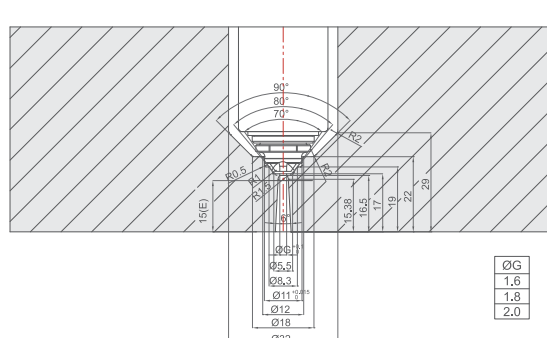
TOE



CT

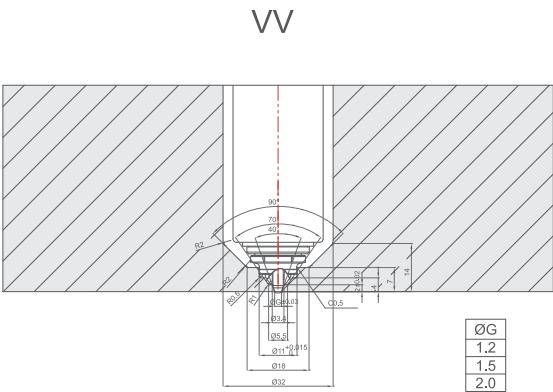


OA

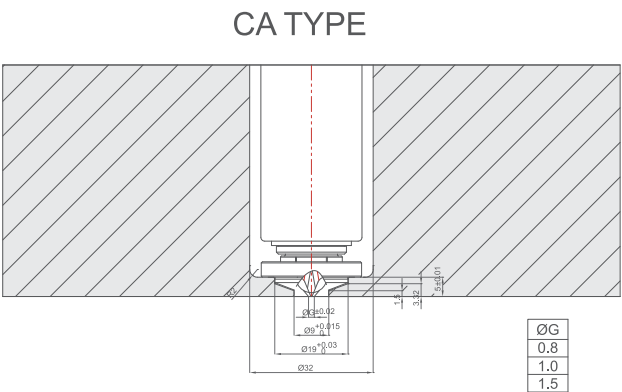


**TINA GP**

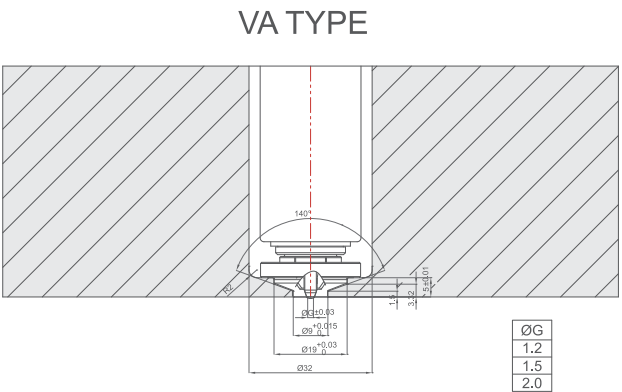
**TINA GP 08 VALVE GATE**



**TINA GP 08 OPEN GATE BUSH**

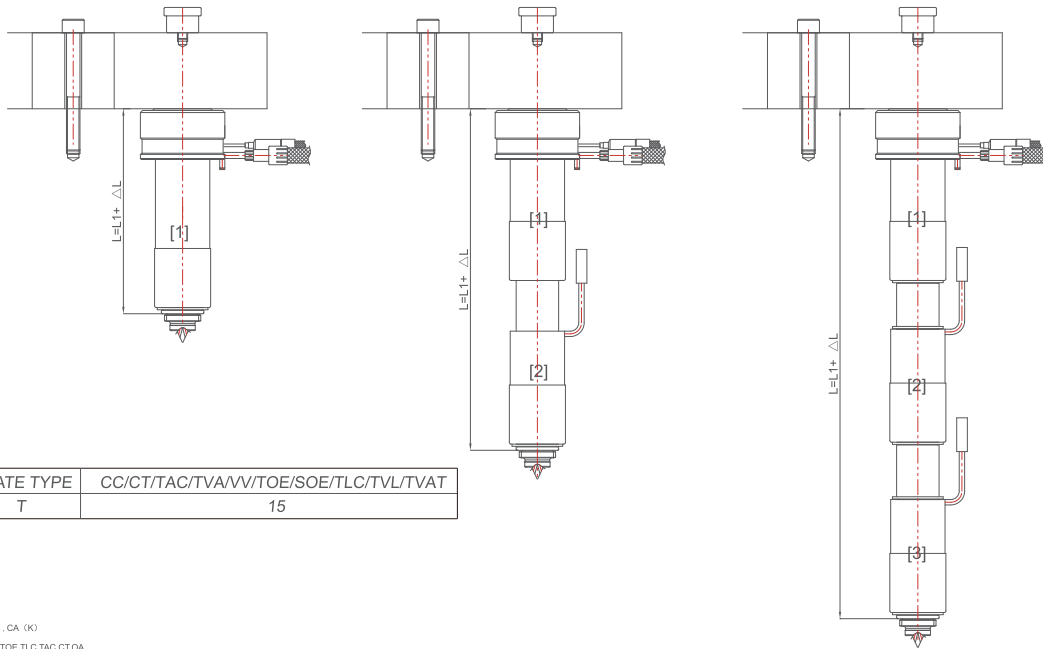


**TINA GP 08 VALVE GATE BUSH**



# TINA GP

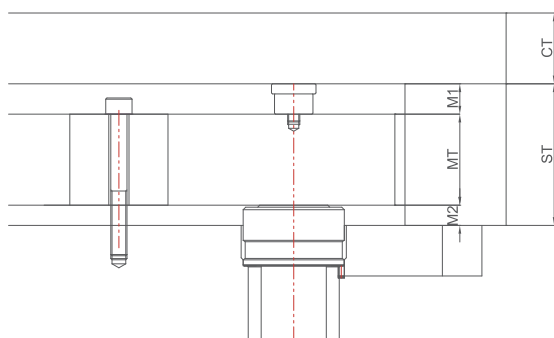
## TINA GP 10 NOZZLE



Code	L	Heater-1	TC-1	Heater-2	TC-2	Heater-3	TC-3
		Code	Code	Code	Code	Code	Code
TGP10□□085□□	66.35 - 76.36	HTTA22250430	NZTPIC[CA]160850				
TGP10□□095□□	76.37 - 86.39	HTTA22250530	NZTPIC[CA]160850				
TGP10□□105□□	86.40 - 96.41	HTTA22250630	NZTPIC[CA]161050				
TGP10□□115□□	96.42 - 106.43	HTTA22250730	NZTPIC[CA]161050				
TGP10□□125□□	106.44 - 116.46	HTTA22250830	NZTPIC[CA]161250				
TGP10□□135□□	116.47 - 126.48	HTTA22250930	NZTPIC[CA]161250				
TGP10□□145□□	126.49 - 136.51	HTTA22251030	NZTPIC[CA]161450				
TGP10□□155□□	136.52 - 146.53	HTTA22251130	NZTPIC[CA]161450				
TGP10□□165□□	146.54 - 156.55	HTTA22251230	NZTPIC[CA]161650				
TGP10□□175□□	156.56 - 166.58	HTTA22251330	NZTPIC[CA]161650				
TGP10□□185□□	166.59 - 177.10	HTTA22251430	NZTPIC[CA]161850				
TGP10□□195□□	177.11 - 187.13	HTTB22250730	NZTPIC[CA]161050	HTTG22250530	NZTPIC[CA]160950		
TGP10□□205□□	187.14 - 197.15	HTTB22250830	NZTPIC[CA]161050	HTTG22250530	NZTPIC[CA]160950		
TGP10□□215□□	197.16 - 207.18	HTTB22250930	NZTPIC[CA]161050	HTTG22250530	NZTPIC[CA]160950		
TGP10□□225□□	207.19 - 217.20	HTTB22251030	NZTPIC[CA]161250	HTTG22250530	NZTPIC[CA]160950		
TGP10□□235□□	217.21 - 227.22	HTTB22251130	NZTPIC[CA]161250	HTTG22250530	NZTPIC[CA]160950		
TGP10□□245□□	227.23 - 237.25	HTTB22251230	NZTPIC[CA]161250	HTTG22250530	NZTPIC[CA]160950		
TGP10□□255□□	237.26 - 247.27	HTTB22251330	NZTPIC[CA]161250	HTTG22250530	NZTPIC[CA]160950		
TGP10□□265□□	247.28 - 257.30	HTTB22251430	NZTPIC[CA]161450	HTTG22250530	NZTPIC[CA]160950		
TGP10□□275□□	257.31 - 267.32	HTTB22251530	NZTPIC[CA]161450	HTTG22250530	NZTPIC[CA]160950		
TGP10□□285□□	267.33 - 277.34	HTTB22251630	NZTPIC[CA]161450	HTTG22250530	NZTPIC[CA]160950		
TGP10□□295□□	277.35 - 287.37	HTTB22251730	NZTPIC[CA]161450	HTTG22250530	NZTPIC[CA]160950		
TGP10□□305□□	287.38 - 297.39	HTTB22251830	NZTPIC[CA]161650	HTTG22250530	NZTPIC[CA]160950		
TGP10□□315□□	297.40 - 307.42	HTTB22251930	NZTPIC[CA]161650	HTTG22250530	NZTPIC[CA]160950		
TGP10□□325□□	307.43 - 317.44	HTTB22252030	NZTPIC[CA]161650	HTTG22250530	NZTPIC[CA]160950		
TGP10□□335□□	317.45 - 327.46	HTTB22252130	NZTPIC[CA]161650	HTTG22250530	NZTPIC[CA]160950		
TGP10□□345□□	327.47 - 337.99	HTTB22252230	NZTPIC[CA]161850	HTTG22250530	NZTPIC[CA]160950		
TGP10□□355□□	338.00 - 348.01	HTTB22250730	NZTPIC[CA]161050	HTTC22251330	NZTPIC[CA]161250	HTTG22250530	NZTPIC[CA]160950
TGP10□□365□□	348.02 - 358.04	HTTB22250830	NZTPIC[CA]161050	HTTC22251330	NZTPIC[CA]161250	HTTG22250530	NZTPIC[CA]160950
TGP10□□375□□	358.05 - 368.06	HTTB22250930	NZTPIC[CA]161050	HTTC22251330	NZTPIC[CA]161250	HTTG22250530	NZTPIC[CA]160950
TGP10□□385□□	368.07 - 378.09	HTTB22251030	NZTPIC[CA]161250	HTTC22251330	NZTPIC[CA]161250	HTTG22250530	NZTPIC[CA]160950
TGP10□□395□□	378.10 - 388.11	HTTB22251130	NZTPIC[CA]161250	HTTC22251330	NZTPIC[CA]161250	HTTG22250530	NZTPIC[CA]160950
TGP10□□405□□	388.12 - 398.13	HTTB22251230	NZTPIC[CA]161250	HTTC22251330	NZTPIC[CA]161250	HTTG22250530	NZTPIC[CA]160950
TGP10□□415□□	398.14 - 408.16	HTTB22251330	NZTPIC[CA]161250	HTTC22251330	NZTPIC[CA]161250	HTTG22250530	NZTPIC[CA]160950
TGP10□□425□□	408.17 - 418.18	HTTB22251030	NZTPIC[CA]161250	HTTC22251730	NZTPIC[CA]161450	HTTG22250530	NZTPIC[CA]160950
TGP10□□435□□	418.19 - 428.21	HTTB22251130	NZTPIC[CA]161250	HTTC22251730	NZTPIC[CA]161450	HTTG22250530	NZTPIC[CA]160950
TGP10□□445□□	428.22 - 438.23	HTTB22251230	NZTPIC[CA]161250	HTTC22251730	NZTPIC[CA]161450	HTTG22250530	NZTPIC[CA]160950
TGP10□□455□□	438.24 - 448.25	HTTB22251330	NZTPIC[CA]161250	HTTC22251730	NZTPIC[CA]161450	HTTG22250530	NZTPIC[CA]160950
TGP10□□465□□	448.26 - 458.28	HTTB22251430	NZTPIC[CA]161450	HTTC22251730	NZTPIC[CA]161450	HTTG22250530	NZTPIC[CA]160950
TGP10□□475□□	458.29 - 468.30	HTTB22251530	NZTPIC[CA]161450	HTTC22251730	NZTPIC[CA]161450	HTTG22250530	NZTPIC[CA]160950
TGP10□□485□□	468.31 - 478.33	HTTB22251630	NZTPIC[CA]161450	HTTC22251730	NZTPIC[CA]161450	HTTG22250530	NZTPIC[CA]160950
TGP10□□495□□	478.34 - 488.35	HTTB22251730	NZTPIC[CA]161450	HTTC22251730	NZTPIC[CA]161450	HTTG22250530	NZTPIC[CA]160950

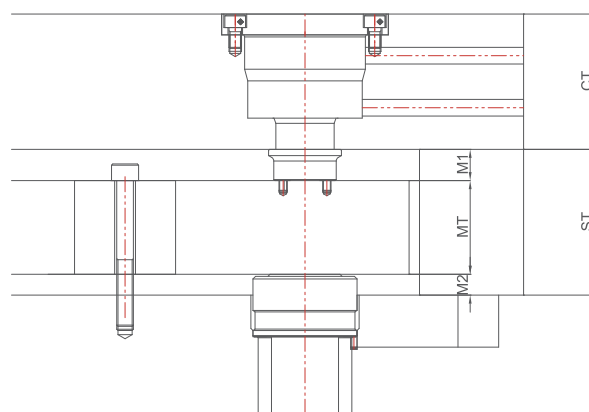
## TINA GP

### TINA GP 10 OPEN SYSTEM



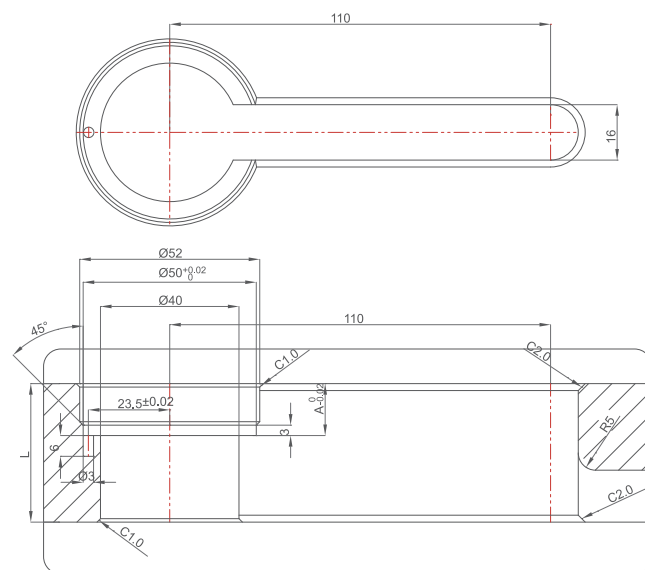
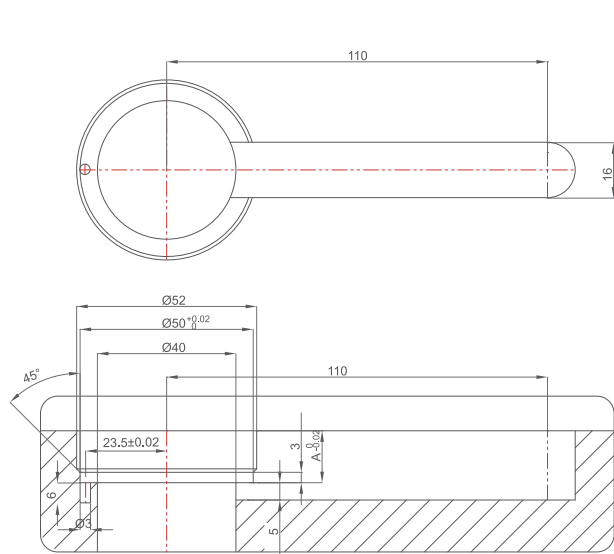
CT[MIN]	ST	MT	M1	M2
35~	70~	45	15	10

### TINA GP 10 VALVE SYSTEM

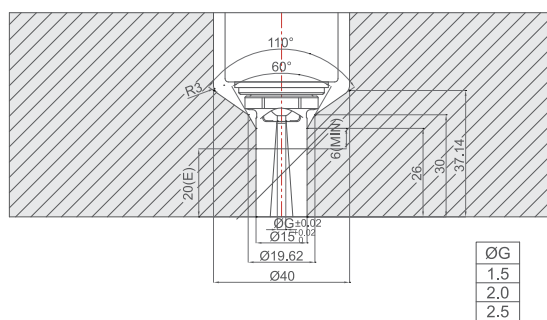


CT[MIN]	ST	MT	M1	M2
65~	70~	45	15	10

### TINA GP 10 FLANGE



## CC

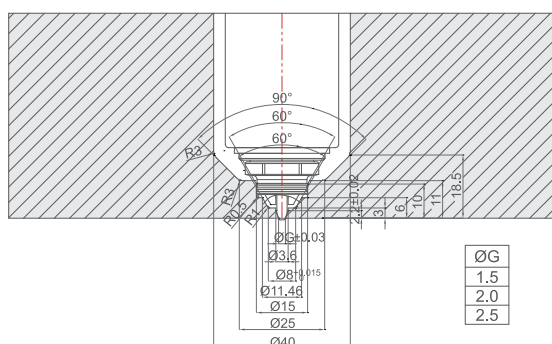




# TINA GP

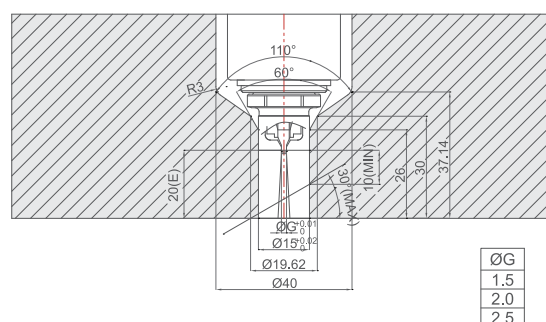
## TINA GP 10 VALVE GATE

VV



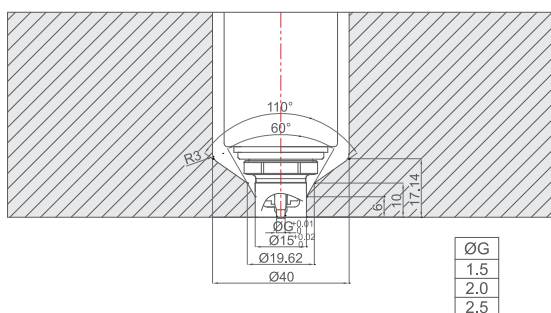
1. Standard tip doesn't include seal cap. In case of white, transparent or color change required, seal cap can be applied as an option.

TVL



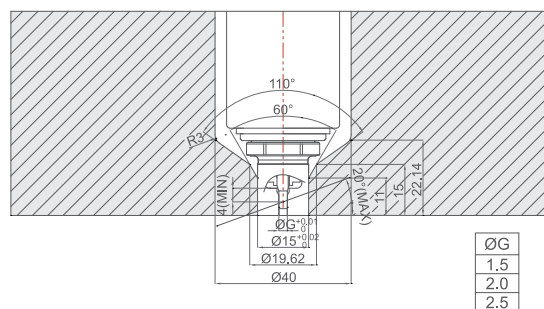
1. Standard tip doesn't include seal cap. In case of white, transparent or color change required, seal cap can be applied as an option.

TVA



1. Standard tip doesn't include seal cap. In case of white, transparent or color change required, seal cap can be applied as an option.

TVAT

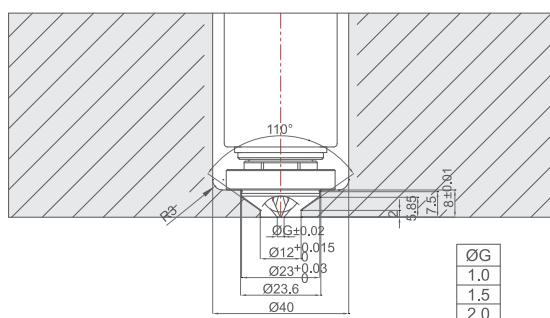


1. Maximum angle – 20°, if over 20° YUDO recommend angled system or you can contact YUDO Technician.
2. Standard tip doesn't include seal cap. In case of white, transparent or color change required, seal cap can be applied as an option.

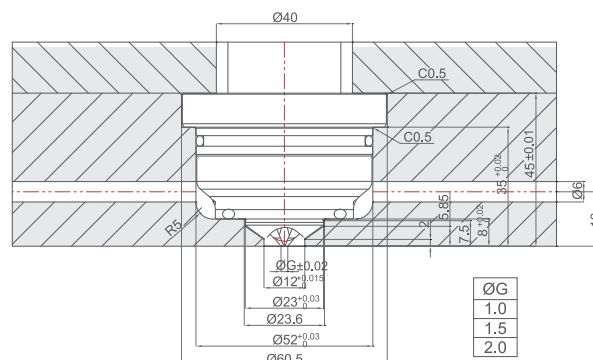
# TINA GP

## TINA GP 10 OPEN GATE BUSH

CA TYPE

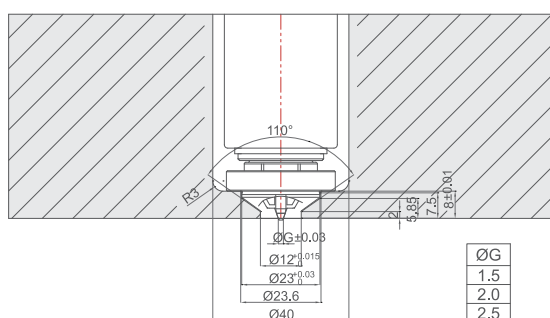


LCF TYPE

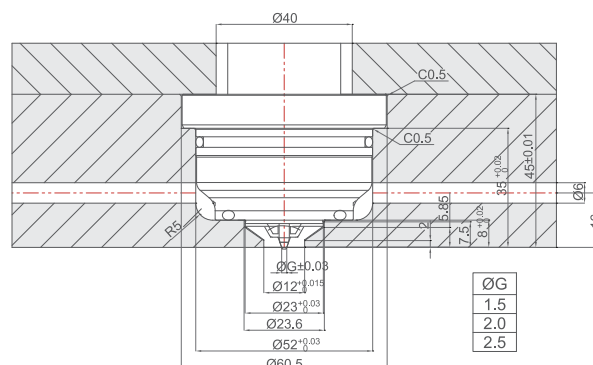


## TINA GP 10 VALVE GATE BUSH

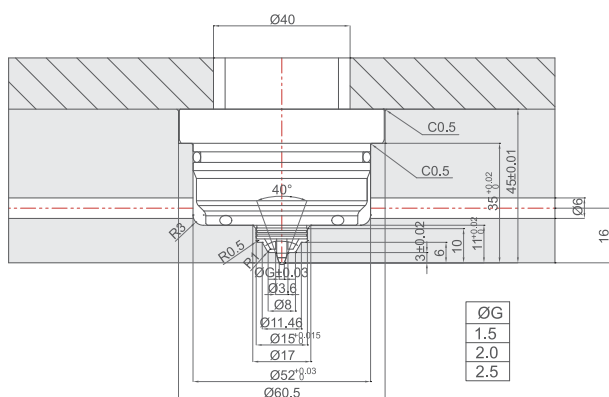
VA TYPE



LVF TYPE

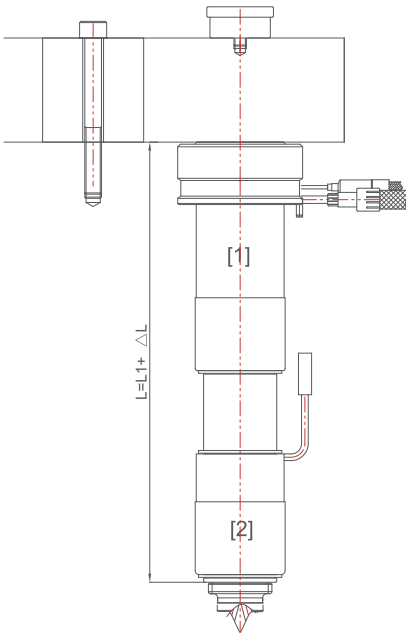
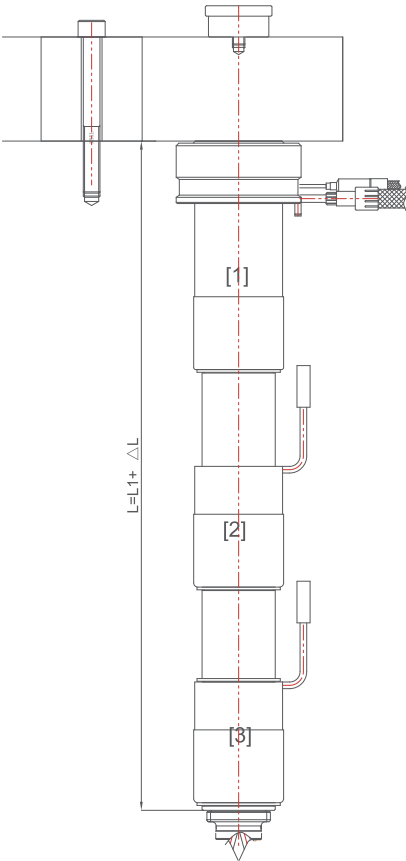
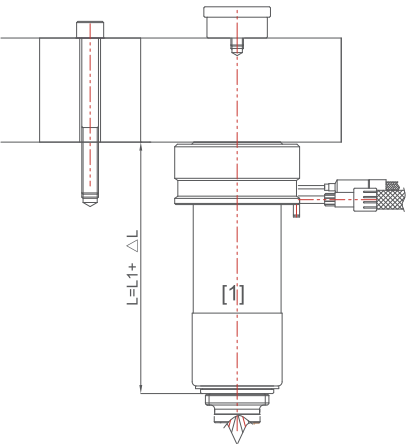


## TINA GP 10 HIDDEN GATE BUSH



**TINA GP**

**TINA GP 15 NOZZLE**

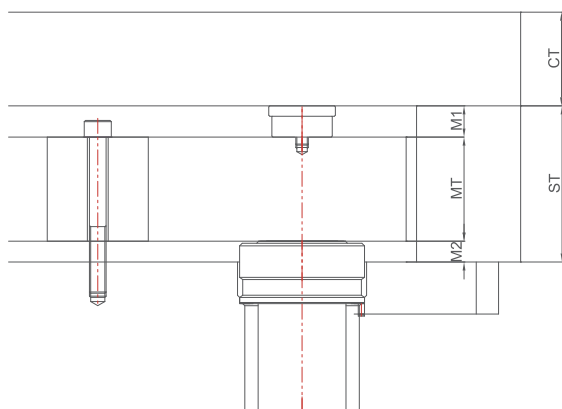


GATE TYPE	CC/CT/TAC/TVA/VV/TOE/SOE/TLC/TVL/TVAT
T	15

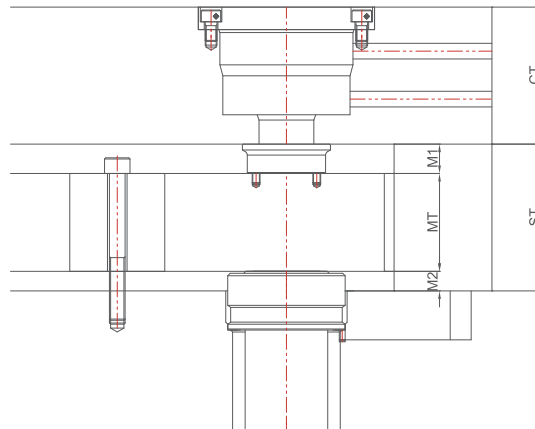
# TINA GP

## TINA GP 15 NOZZLE

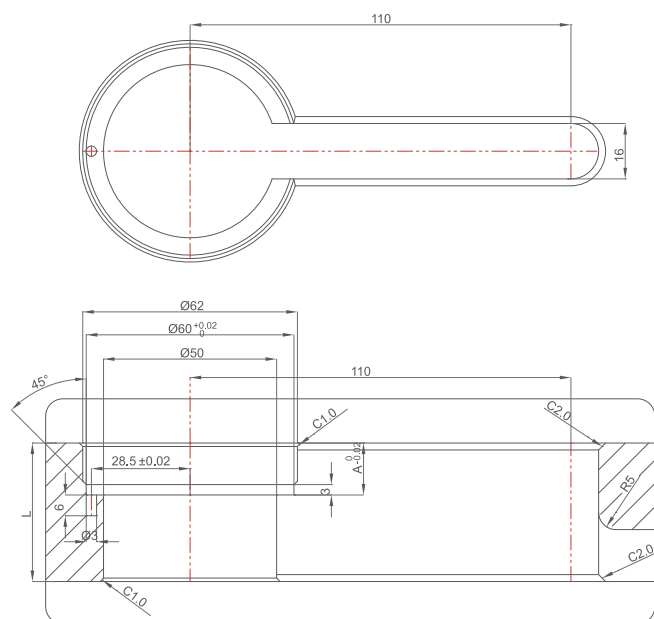
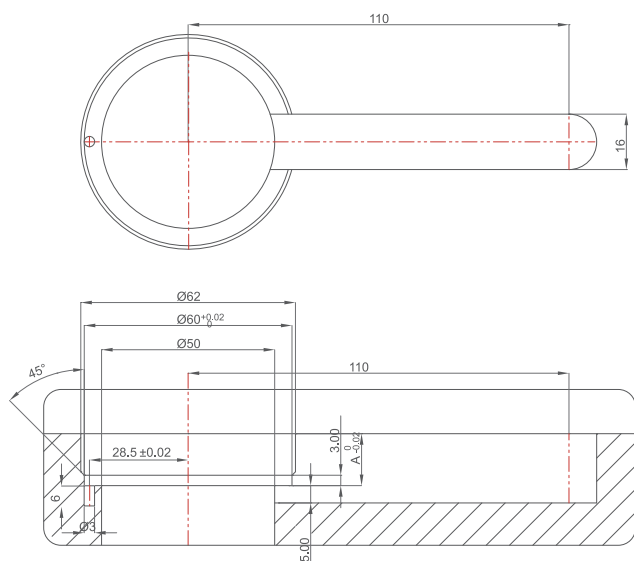
Code	L	Heater-1	TC-1	Heater-2	TC-2	Heater-3	TC-3
		Code	Code	Code	Code	Code	Code
TGP15 □□ 105 □□	71.36 - 81.37	HTTA22350480	NZTPIC[CA]160850				
TGP15 □□ 115 □□	81.38 - 91.40	HTTA22350580	NZTPIC[CA]160850				
TGP15 □□ 125 □□	91.41 - 101.42	HTTA22350680	NZTPIC[CA]161050				
TGP15 □□ 135 □□	101.43 - 111.45	HTTA22350780	NZTPIC[CA]161050				
TGP15 □□ 145 □□	111.46 - 121.47	HTTA22350880	NZTPIC[CA]161250				
TGP15 □□ 155 □□	121.48 - 131.49	HTTA22350980	NZTPIC[CA]161250				
TGP15 □□ 165 □□	131.50 - 141.52	HTTA22351080	NZTPIC[CA]161450				
TGP15 □□ 175 □□	141.53 - 151.54	HTTA22351180	NZTPIC[CA]161450				
TGP15 □□ 185 □□	151.55 - 161.57	HTTA22351280	NZTPIC[CA]161650				
TGP15 □□ 195 □□	161.58 - 171.59	HTTA22351380	NZTPIC[CA]161650				
TGP15 □□ 205 □□	171.60 - 181.61	HTTA22351480	NZTPIC[CA]161850				
TGP15 □□ 215 □□	181.62 - 192.14	HTTA22351580	NZTPIC[CA]161850				
TGP15 □□ 225 □□	192.15 - 202.16	HTTB22350880	NZTPIC[CA]161050	HTTG22350480	NZTPIC[CA]160850		
TGP15 □□ 235 □□	202.17 - 212.19	HTTB22350980	NZTPIC[CA]161050	HTTG22350480	NZTPIC[CA]160850		
TGP15 □□ 245 □□	212.20 - 222.21	HTTB22351080	NZTPIC[CA]161250	HTTG22350480	NZTPIC[CA]160850		
TGP15 □□ 255 □□	222.22 - 232.24	HTTB22351180	NZTPIC[CA]161250	HTTG22350480	NZTPIC[CA]160850		
TGP15 □□ 265 □□	232.25 - 242.26	HTTB22351280	NZTPIC[CA]161250	HTTG22350480	NZTPIC[CA]160850		
TGP15 □□ 275 □□	242.27 - 252.28	HTTB22351380	NZTPIC[CA]161250	HTTG22350480	NZTPIC[CA]160850		
TGP15 □□ 285 □□	252.29 - 262.31	HTTB22351480	NZTPIC[CA]161450	HTTG22350480	NZTPIC[CA]160850		
TGP15 □□ 295 □□	262.32 - 272.33	HTTB22351580	NZTPIC[CA]161450	HTTG22350480	NZTPIC[CA]160850		
TGP15 □□ 305 □□	272.34 - 282.36	HTTB22351680	NZTPIC[CA]161450	HTTG22350480	NZTPIC[CA]160850		
TGP15 □□ 315 □□	282.37 - 292.38	HTTB22351780	NZTPIC[CA]161450	HTTG22350480	NZTPIC[CA]160850		
TGP15 □□ 325 □□	292.39 - 302.40	HTTB22351880	NZTPIC[CA]161650	HTTG22350480	NZTPIC[CA]160850		
TGP15 □□ 335 □□	302.41 - 312.43	HTTB22351980	NZTPIC[CA]161650	HTTG22350480	NZTPIC[CA]160850		
TGP15 □□ 345 □□	312.44 - 322.45	HTTB22352080	NZTPIC[CA]161650	HTTG22350480	NZTPIC[CA]160850		
TGP15 □□ 355 □□	322.46 - 332.48	HTTB22352180	NZTPIC[CA]161650	HTTG22350480	NZTPIC[CA]160850		
TGP15 □□ 365 □□	332.49 - 342.50	HTTB22352280	NZTPIC[CA]161850	HTTG22350480	NZTPIC[CA]160850		
TGP15 □□ 375 □□	342.51 - 352.52	HTTB22352380	NZTPIC[CA]161850	HTTG22350480	NZTPIC[CA]160850		
TGP15 □□ 385 □□	352.53 - 362.55	HTTB22352480	NZTPIC[CA]161850	HTTG22350480	NZTPIC[CA]160850		
TGP15 □□ 395 □□	362.56 - 372.57	HTTB22352580	NZTPIC[CA]161850	HTTG22350480	NZTPIC[CA]160850		
TGP15 □□ 405 □□	372.58 - 383.10	HTTB22352680	NZTPIC[CA]162050	HTTG22350480	NZTPIC[CA]160850		
TGP15 □□ 415 □□	383.11 - 393.12	HTTB22350980	NZTPIC[CA]161050	HTTC22351480	NZTPIC[CA]161450	HTTG22350480	NZTPIC[CA]160850
TGP15 □□ 425 □□	393.13 - 403.15	HTTB22351080	NZTPIC[CA]161250	HTTC22351480	NZTPIC[CA]161450	HTTG22350480	NZTPIC[CA]160850
TGP15 □□ 435 □□	403.16 - 413.17	HTTB22351180	NZTPIC[CA]161250	HTTC22351480	NZTPIC[CA]161450	HTTG22350480	NZTPIC[CA]160850
TGP15 □□ 445 □□	413.18 - 423.19	HTTB22351280	NZTPIC[CA]161250	HTTC22351480	NZTPIC[CA]161450	HTTG22350480	NZTPIC[CA]160850
TGP15 □□ 455 □□	423.20 - 433.22	HTTB22351380	NZTPIC[CA]161250	HTTC22351480	NZTPIC[CA]161450	HTTG22350480	NZTPIC[CA]160850
TGP15 □□ 465 □□	433.23 - 443.24	HTTB22351480	NZTPIC[CA]161450	HTTC22351480	NZTPIC[CA]161450	HTTG22350480	NZTPIC[CA]160850
TGP15 □□ 475 □□	443.25 - 453.27	HTTB22351580	NZTPIC[CA]161450	HTTC22351480	NZTPIC[CA]161450	HTTG22350480	NZTPIC[CA]160850
TGP15 □□ 485 □□	453.28 - 463.29	HTTB22351680	NZTPIC[CA]161450	HTTC22351480	NZTPIC[CA]161450	HTTG22350480	NZTPIC[CA]160850
TGP15 □□ 495 □□	463.30 - 473.31	HTTB22351780	NZTPIC[CA]161450	HTTC22351480	NZTPIC[CA]161450	HTTG22350480	NZTPIC[CA]160850
TGP15 □□ 505 □□	473.32 - 483.34	HTTB22351880	NZTPIC[CA]161650	HTTC22351480	NZTPIC[CA]161450	HTTG22350480	NZTPIC[CA]160850
TGP15 □□ 515 □□	483.35 - 493.36	HTTB22351980	NZTPIC[CA]161650	HTTC22351480	NZTPIC[CA]161850	HTTG22350480	NZTPIC[CA]160850
TGP15 □□ 525 □□	493.37 - 503.39	HTTB22351080	NZTPIC[CA]161250	HTTC22352480	NZTPIC[CA]161850	HTTG22350480	NZTPIC[CA]160850
TGP15 □□ 535 □□	503.40 - 513.41	HTTB22351180	NZTPIC[CA]161250	HTTC22352480	NZTPIC[CA]161850	HTTG22350480	NZTPIC[CA]160850
TGP15 □□ 545 □□	513.42 - 523.43	HTTB22351280	NZTPIC[CA]161250	HTTC22352480	NZTPIC[CA]161850	HTTG22350480	NZTPIC[CA]160850
TGP15 □□ 555 □□	523.44 - 533.46	HTTB22351380	NZTPIC[CA]161250	HTTC22352480	NZTPIC[CA]161850	HTTG22350480	NZTPIC[CA]160850
TGP15 □□ 565 □□	533.47 - 543.48	HTTB22351480	NZTPIC[CA]161450	HTTC22352480	NZTPIC[CA]161850	HTTG22350480	NZTPIC[CA]160850
TGP15 □□ 575 □□	543.49 - 553.51	HTTB22351580	NZTPIC[CA]161450	HTTC22352480	NZTPIC[CA]161850	HTTG22350480	NZTPIC[CA]160850
TGP15 □□ 585 □□	553.52 - 563.53	HTTB22351680	NZTPIC[CA]161450	HTTC22352480	NZTPIC[CA]161850	HTTG22350480	NZTPIC[CA]160850
TGP15 □□ 595 □□	563.54 - 573.55	HTTB22351780	NZTPIC[CA]161450	HTTC22352480	NZTPIC[CA]161850	HTTG22350480	NZTPIC[CA]160850
TGP15 □□ 605 □□	573.56 - 583.58	HTTB22351880	NZTPIC[CA]161650	HTTC22352480	NZTPIC[CA]161850	HTTG22350480	NZTPIC[CA]160850
TGP15 □□ 615 □□	583.59 - 593.60	HTTB22351980	NZTPIC[CA]161650	HTTC22352480	NZTPIC[CA]161850	HTTG22350480	NZTPIC[CA]160850
TGP15 □□ 625 □□	593.61 - 603.63	HTTB22352080	NZTPIC[CA]161650	HTTC22352480	NZTPIC[CA]161850	HTTG22350480	NZTPIC[CA]160850
TGP15 □□ 635 □□	603.64 - 613.65	HTTB22352180	NZTPIC[CA]161650	HTTC22352480	NZTPIC[CA]161850	HTTG22350480	NZTPIC[CA]160850
TGP15 □□ 645 □□	613.66 - 623.67	HTTB22352280	NZTPIC[CA]161850	HTTC22352480	NZTPIC[CA]161850	HTTG22350480	NZTPIC[CA]160850
TGP15 □□ 655 □□	623.68 - 633.70	HTTB22352380	NZTPIC[CA]161850	HTTC22352480	NZTPIC[CA]161850	HTTG22350480	NZTPIC[CA]160850
TGP15 □□ 665 □□	633.71 - 643.72	HTTB22352480	NZTPIC[CA]161850	HTTC22352480	NZTPIC[CA]161850	HTTG22350480	NZTPIC[CA]160850
TGP15 □□ 675 □□	643.73 - 653.75	HTTB22352580	NZTPIC[CA]161850	HTTC22352480	NZTPIC[CA]161850	HTTG22350480	NZTPIC[CA]160850
TGP15 □□ 685 □□	653.76 - 663.77	HTTB22352680	NZTPIC[CA]162050	HTTC22352480	NZTPIC[CA]161850	HTTG22350480	NZTPIC[CA]160850



CT[MIN]	ST	MT	M1	M2
45~	75~	50	15	10



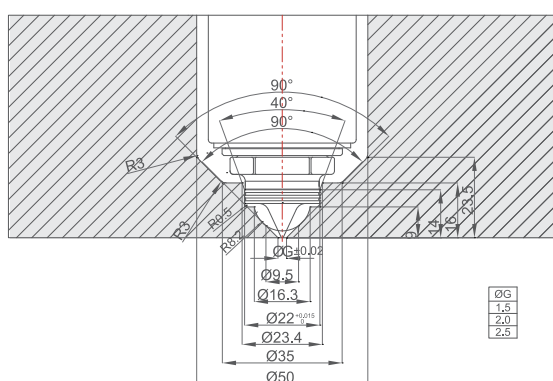
CT[MIN]	ST	MT	M1	M2
70~	75~	50	15	10



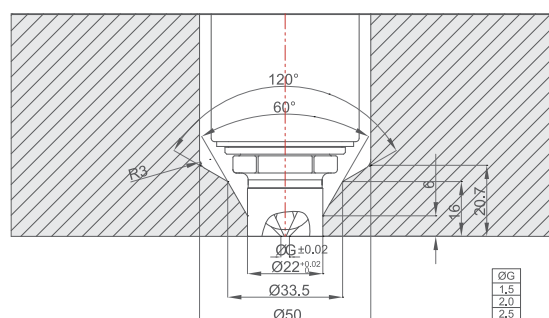
# TINA GP

## TINA GP 15 OPEN GATE

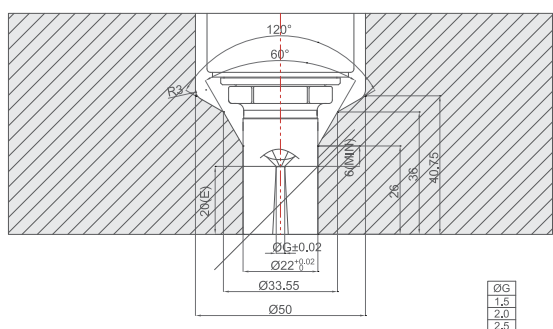
CC



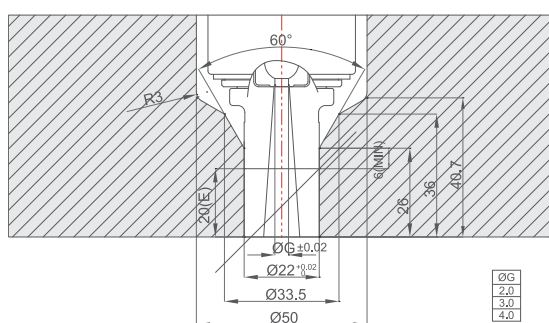
TAC



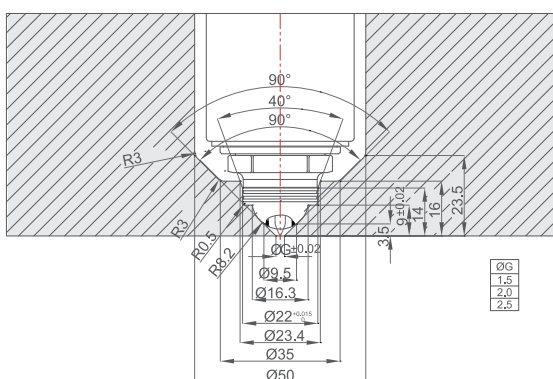
TLC



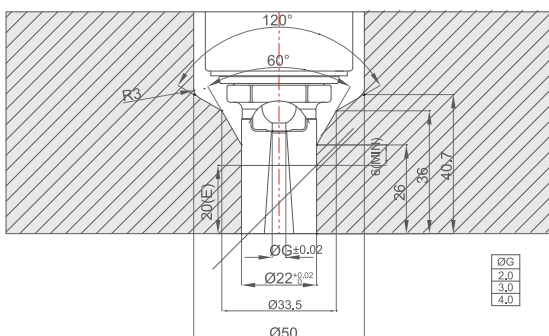
TOE



CT



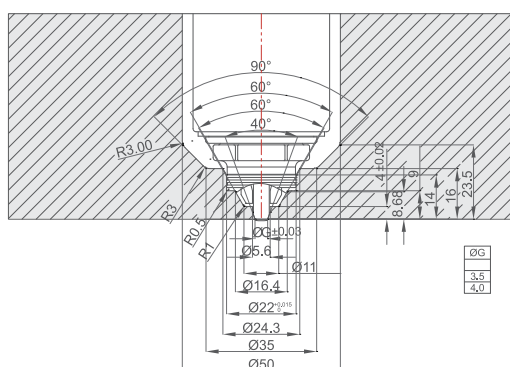
SOE



# TINA GP

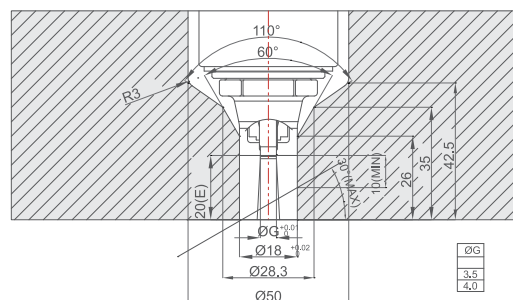
## TINA GP 15 VALVE GATE

VV



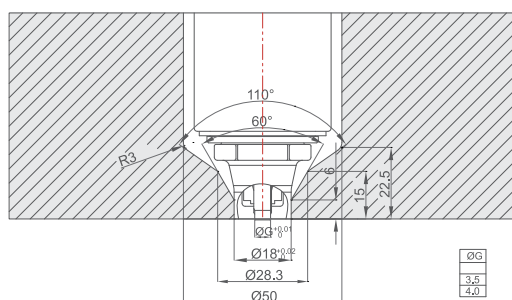
1. Standard tip doesn't include seal cap. In case of white, transparent or color change required, seal cap can be applied as an option.

TVL



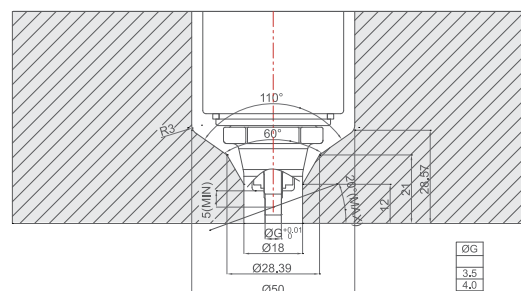
1. Standard tip doesn't include seal cap. In case of white, transparent or color change required, seal cap can be applied as an option.

TVA



1. Standard tip doesn't include seal cap. In case of white, transparent or color change required, seal cap can be applied as an option.

TVAT

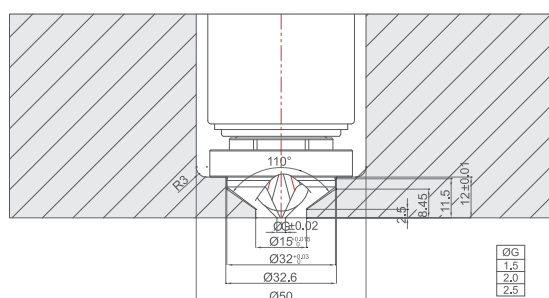


1. Maximum angle – 20°, if over 20° YUDO recommends an angled system or you can contact YUDO Technician.  
2. Standard tip doesn't include seal cap. In case of white, transparent or color change required, seal cap can be applied as an option.

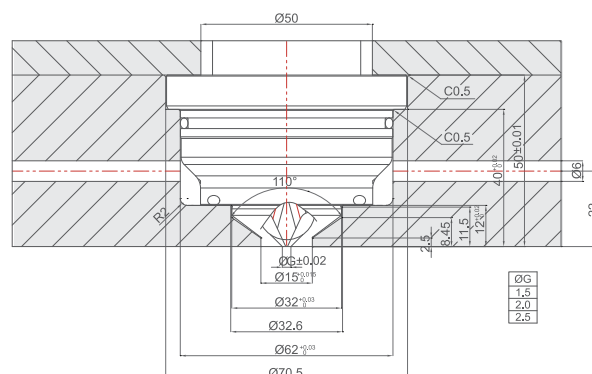
# TINA GP

## TINA GP 15 OPEN GATE BUSH

CA TYPE

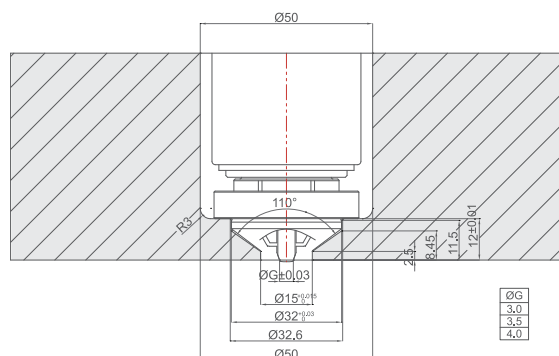


LCF TYPE

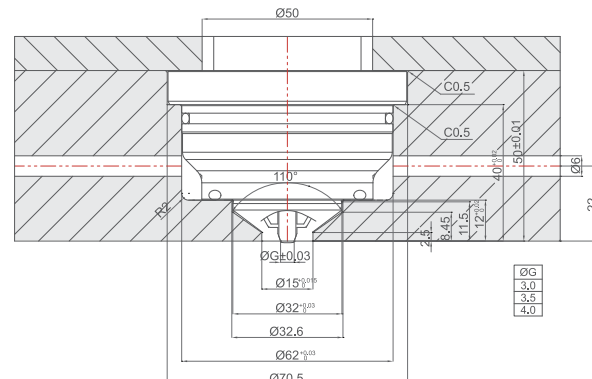


## TINA GP 15 VALVE GATE BUSH

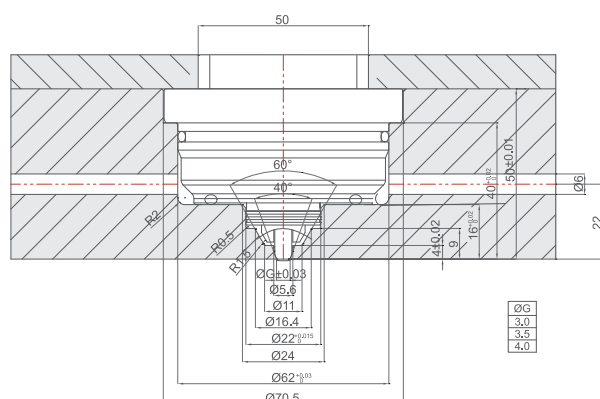
VA TYPE



LVF TYPE



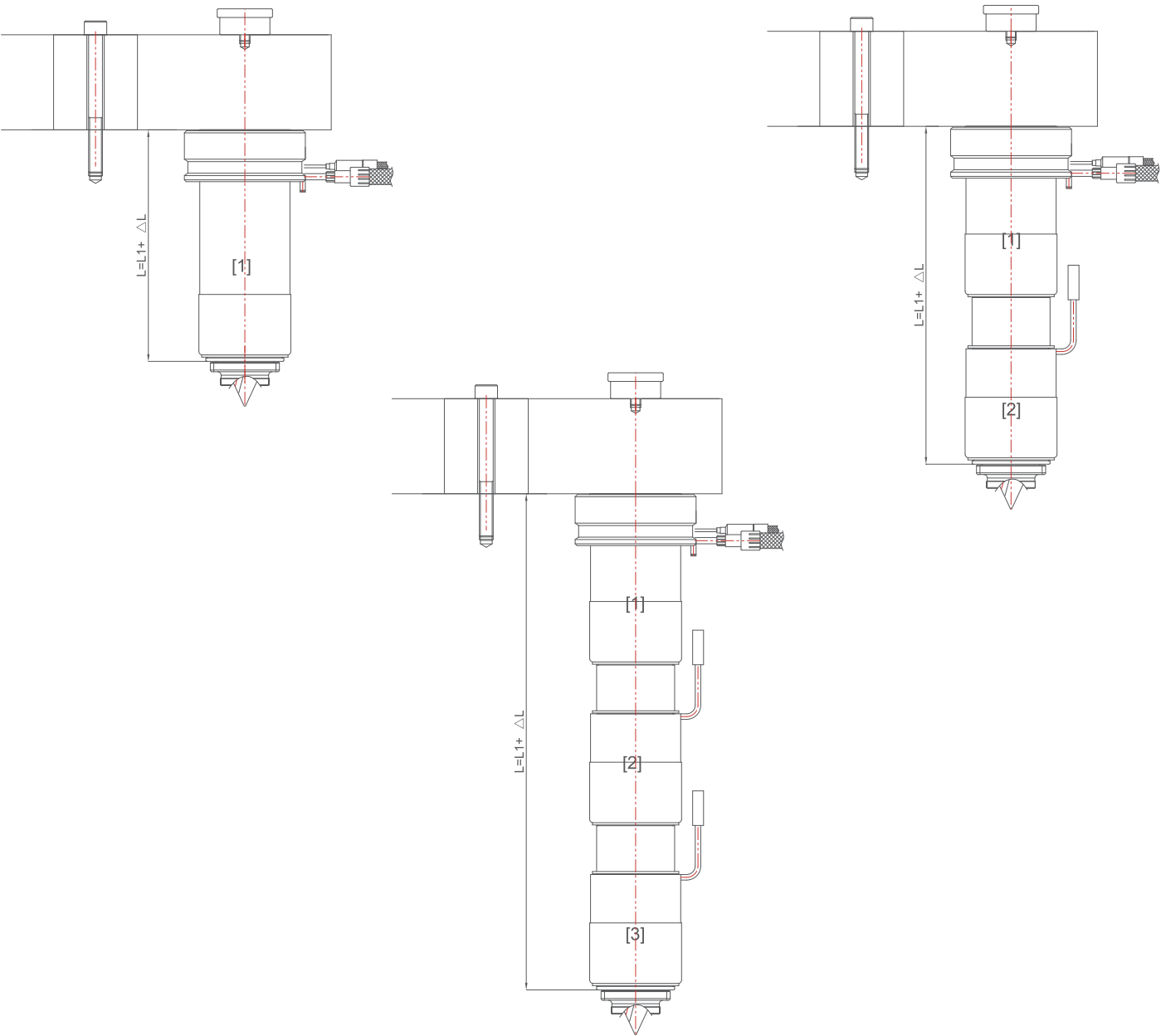
## TINA GP 15 HIDDEN GATE BUSH





**TINA GP**

**TINA GP 22 NOZZLE**



GATE TYPE	CC/CT/TAC/TVA/VV/TOE/SOE/TLC/TVL/TVAT
T	15

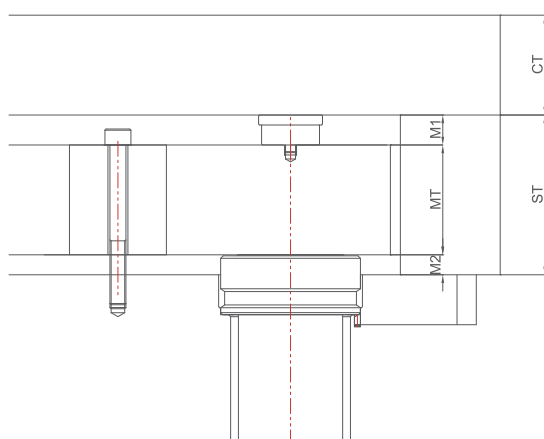
# TINA GP

## TINA GP 22 NOZZLE

Code	L	Heater-1		TC-1		Heater-2		TC-2		Heater-3		TC-3	
		Code		Code		Code		Code		Code		Code	
TGP22 □□ 105 □□	76.37	-	86.39	HTTA22450530	NZTPIC[CA]160850								
TGP22 □□ 115 □□	86.40	-	96.41	HTTA22450630	NZTPIC[CA]161050								
TGP22 □□ 125 □□	96.42	-	106.43	HTTA22450730	NZTPIC[CA]161050								
TGP22 □□ 135 □□	106.44	-	116.46	HTTA22450830	NZTPIC[CA]161250								
TGP22 □□ 145 □□	116.47	-	126.48	HTTA22450930	NZTPIC[CA]161250								
TGP22 □□ 155 □□	126.49	-	136.51	HTTA22451030	NZTPIC[CA]161450								
TGP22 □□ 165 □□	136.52	-	146.53	HTTA22451130	NZTPIC[CA]161450								
TGP22 □□ 175 □□	146.54	-	156.55	HTTA22451230	NZTPIC[CA]161650								
TGP22 □□ 185 □□	156.56	-	166.58	HTTA22451330	NZTPIC[CA]161650								
TGP22 □□ 195 □□	166.59	-	176.60	HTTA22451430	NZTPIC[CA]161850								
TGP22 □□ 205 □□	176.61	-	186.63	HTTA22451530	NZTPIC[CA]161850								
TGP22 □□ 215 □□	186.64	-	197.15	HTTA22451630	NZTPIC[CA]162050								
TGP22 □□ 225 □□	197.16	-	207.18	HTTB22450830	NZTPIC[CA]161050	HTTG22450530	NZTPIC[CA]161050						
TGP22 □□ 235 □□	207.19	-	217.20	HTTB22450930	NZTPIC[CA]161050	HTTG22450530	NZTPIC[CA]161050						
TGP22 □□ 245 □□	217.21	-	227.22	HTTB22451030	NZTPIC[CA]161250	HTTG22450530	NZTPIC[CA]161050						
TGP22 □□ 255 □□	227.23	-	237.25	HTTB22451130	NZTPIC[CA]161250	HTTG22450530	NZTPIC[CA]161050						
TGP22 □□ 265 □□	237.26	-	247.27	HTTB22451230	NZTPIC[CA]161250	HTTG22450530	NZTPIC[CA]161050						
TGP22 □□ 275 □□	247.28	-	257.30	HTTB22451330	NZTPIC[CA]161250	HTTG22450530	NZTPIC[CA]161050						
TGP22 □□ 285 □□	257.31	-	267.32	HTTB22451430	NZTPIC[CA]161450	HTTG22450530	NZTPIC[CA]161050						
TGP22 □□ 295 □□	267.33	-	277.34	HTTB22451530	NZTPIC[CA]161450	HTTG22450530	NZTPIC[CA]161050						
TGP22 □□ 305 □□	277.35	-	287.37	HTTB22451630	NZTPIC[CA]161450	HTTG22450530	NZTPIC[CA]161050						
TGP22 □□ 315 □□	287.38	-	297.39	HTTB22451730	NZTPIC[CA]161450	HTTG22450530	NZTPIC[CA]161050						
TGP22 □□ 325 □□	297.40	-	307.42	HTTB22451830	NZTPIC[CA]161650	HTTG22450530	NZTPIC[CA]161050						
TGP22 □□ 335 □□	307.43	-	317.44	HTTB22451930	NZTPIC[CA]161650	HTTG22450530	NZTPIC[CA]161050						
TGP22 □□ 345 □□	317.45	-	327.46	HTTB22452030	NZTPIC[CA]161650	HTTG22450530	NZTPIC[CA]161050						
TGP22 □□ 355 □□	327.47	-	337.49	HTTB22452130	NZTPIC[CA]161650	HTTG22450530	NZTPIC[CA]161050						
TGP22 □□ 365 □□	337.50	-	347.51	HTTB22452230	NZTPIC[CA]161850	HTTG22450530	NZTPIC[CA]161050						
TGP22 □□ 375 □□	347.52	-	357.54	HTTB22452330	NZTPIC[CA]161850	HTTG22450530	NZTPIC[CA]161050						
TGP22 □□ 385 □□	357.55	-	367.56	HTTB22452430	NZTPIC[CA]161850	HTTG22450530	NZTPIC[CA]161050						
TGP22 □□ 395 □□	367.57	-	377.58	HTTB22452530	NZTPIC[CA]161850	HTTG22450530	NZTPIC[CA]161050						
TGP22 □□ 405 □□	377.59	-	388.11	HTTB22452630	NZTPIC[CA]162050	HTTG22450530	NZTPIC[CA]161050						
TGP22 □□ 415 □□	388.12	-	398.13	HTTB22450930	NZTPIC[CA]161050	HTTC22451530	NZTPIC[CA]161450	HTTG22450530	NZTPIC[CA]161050				
TGP22 □□ 425 □□	398.14	-	408.16	HTTB22451030	NZTPIC[CA]161250	HTTC22451530	NZTPIC[CA]161450	HTTG22450530	NZTPIC[CA]161050				
TGP22 □□ 435 □□	408.17	-	418.18	HTTB22451130	NZTPIC[CA]161250	HTTC22451530	NZTPIC[CA]161450	HTTG22450530	NZTPIC[CA]161050				
TGP22 □□ 445 □□	418.19	-	428.21	HTTB22451230	NZTPIC[CA]161250	HTTC22451530	NZTPIC[CA]161450	HTTG22450530	NZTPIC[CA]161050				
TGP22 □□ 455 □□	428.22	-	438.23	HTTB22451330	NZTPIC[CA]161250	HTTC22451530	NZTPIC[CA]161450	HTTG22450530	NZTPIC[CA]161050				
TGP22 □□ 465 □□	438.24	-	448.25	HTTB22451430	NZTPIC[CA]161450	HTTC22451530	NZTPIC[CA]161450	HTTG22450530	NZTPIC[CA]161050				
TGP22 □□ 475 □□	448.26	-	458.28	HTTB22451530	NZTPIC[CA]161450	HTTC22451530	NZTPIC[CA]161450	HTTG22450530	NZTPIC[CA]161050				
TGP22 □□ 485 □□	458.29	-	468.30	HTTB22451630	NZTPIC[CA]161450	HTTC22451530	NZTPIC[CA]161450	HTTG22450530	NZTPIC[CA]161050				
TGP22 □□ 495 □□	468.31	-	478.33	HTTB22451730	NZTPIC[CA]161450	HTTC22451530	NZTPIC[CA]161450	HTTG22450530	NZTPIC[CA]161050				
TGP22 □□ 505 □□	478.34	-	488.35	HTTB22451830	NZTPIC[CA]161650	HTTC22451530	NZTPIC[CA]161450	HTTG22450530	NZTPIC[CA]161050				
TGP22 □□ 515 □□	488.36	-	498.37	HTTB22451930	NZTPIC[CA]161650	HTTC22451530	NZTPIC[CA]161450	HTTG22450530	NZTPIC[CA]161050				
TGP22 □□ 525 □□	498.38	-	508.40	HTTB22452030	NZTPIC[CA]161650	HTTC22451530	NZTPIC[CA]161450	HTTG22450530	NZTPIC[CA]161050				
TGP22 □□ 535 □□	508.41	-	518.42	HTTB22452130	NZTPIC[CA]161650	HTTC22451530	NZTPIC[CA]161450	HTTG22450530	NZTPIC[CA]161050				
TGP22 □□ 545 □□	518.43	-	528.45	HTTB22452230	NZTPIC[CA]161850	HTTC22451530	NZTPIC[CA]161450	HTTG22450530	NZTPIC[CA]161050				
TGP22 □□ 555 □□	528.46	-	538.47	HTTB22451330	NZTPIC[CA]161250	HTTC22452530	NZTPIC[CA]161850	HTTG22450530	NZTPIC[CA]161050				
TGP22 □□ 565 □□	538.48	-	548.49	HTTB22451430	NZTPIC[CA]161450	HTTC22452530	NZTPIC[CA]161850	HTTG22450530	NZTPIC[CA]161050				
TGP22 □□ 575 □□	548.50	-	558.52	HTTB22451530	NZTPIC[CA]161450	HTTC22452530	NZTPIC[CA]161850	HTTG22450530	NZTPIC[CA]161050				
TGP22 □□ 585 □□	558.53	-	568.54	HTTB22451630	NZTPIC[CA]161450	HTTC22452530	NZTPIC[CA]161850	HTTG22450530	NZTPIC[CA]161050				
TGP22 □□ 595 □□	568.55	-	578.57	HTTB22451730	NZTPIC[CA]161450	HTTC22452530	NZTPIC[CA]161850	HTTG22450530	NZTPIC[CA]161050				
TGP22 □□ 605 □□	578.58	-	588.59	HTTB22451830	NZTPIC[CA]161650	HTTC22452530	NZTPIC[CA]161850	HTTG22450530	NZTPIC[CA]161050				
TGP22 □□ 615 □□	588.60	-	598.61	HTTB22451930	NZTPIC[CA]161650	HTTC22452530	NZTPIC[CA]161850	HTTG22450530	NZTPIC[CA]161050				
TGP22 □□ 625 □□	598.62	-	608.64	HTTB22452030	NZTPIC[CA]161650	HTTC22452530	NZTPIC[CA]161850	HTTG22450530	NZTPIC[CA]161050				
TGP22 □□ 635 □□	608.65	-	618.66	HTTB22452130	NZTPIC[CA]161650	HTTC22452530	NZTPIC[CA]161850	HTTG22450530	NZTPIC[CA]161050				
TGP22 □□ 645 □□	618.67	-	628.69	HTTB22452230	NZTPIC[CA]161850	HTTC22452530	NZTPIC[CA]161850	HTTG22450530	NZTPIC[CA]161050				
TGP22 □□ 655 □□	628.70	-	638.71	HTTB22452330	NZTPIC[CA]161850	HTTC22452530	NZTPIC[CA]161850	HTTG22450530	NZTPIC[CA]161050				
TGP22 □□ 665 □□	638.72	-	648.73	HTTB22452430	NZTPIC[CA]161850	HTTC22452530	NZTPIC[CA]161850	HTTG22450530	NZTPIC[CA]161050				
TGP22 □□ 675 □□	648.74	-	658.76	HTTB22452530	NZTPIC[CA]161850	HTTC22452530	NZTPIC[CA]161850	HTTG22450530	NZTPIC[CA]161050				
TGP22 □□ 685 □□	658.77	-	668.78	HTTB22452630	NZTPIC[CA]162050	HTTC22452530	NZTPIC[CA]161850	HTTG22450530	NZTPIC[CA]161050				
TGP22 □□ 695 □□	668.79	-	678.81	HTTB22452730	NZTPIC[CA]162050	HTTC22452530	NZTPIC[CA]161850	HTTG22450530	NZTPIC[CA]161050				
TGP22 □□ 705 □□	678.82	-	688.83	HTTB22452830	NZTPIC[CA]162050	HTTC22452530	NZTPIC[CA]161850	HTTG22450530	NZTPIC[CA]161050				
TGP22 □□ 715 □□	688.84	-	698.86	HTTB22452930	NZTPIC[CA]162050	HTTC22452530	NZTPIC[CA]161850	HTTG22450530	NZTPIC[CA]161050				

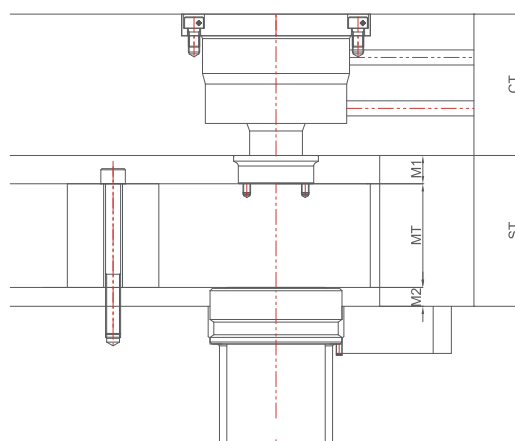
# TINA GP

## TINA GP 22 OPEN SYSTEM



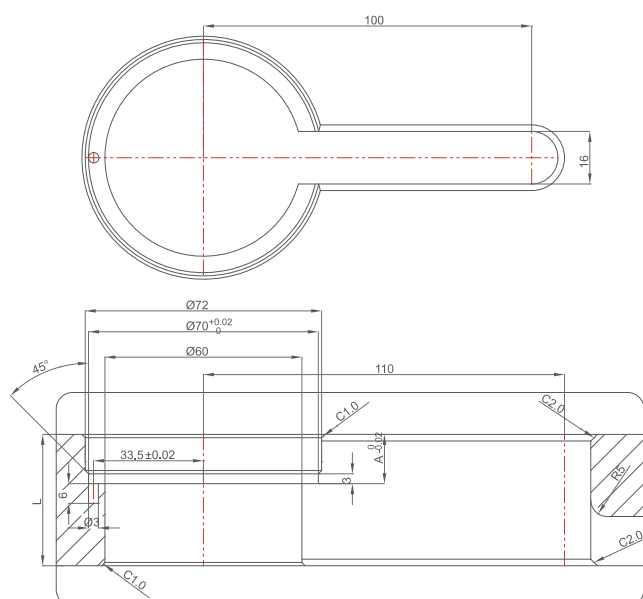
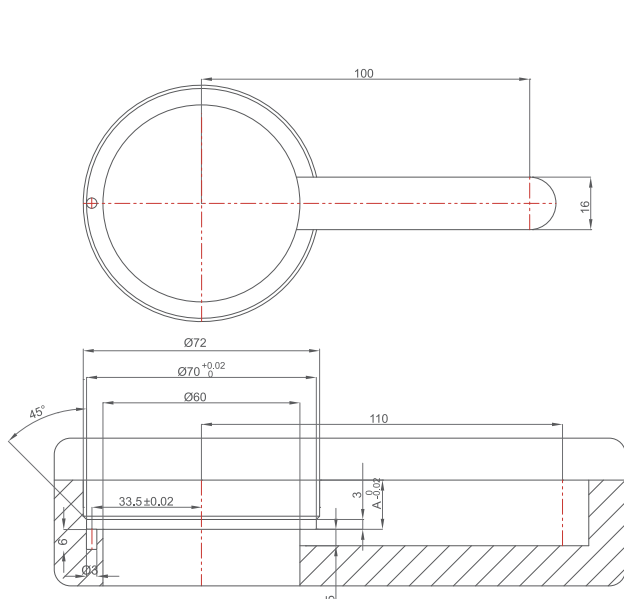
CT[MIN]	ST	MT	M1	M2
50~	80~	55	15	10

## TINA GP 22 VALVE SYSTEM



CT[MIN]	ST	MT	M1	M2
75~	80~	55	15	10

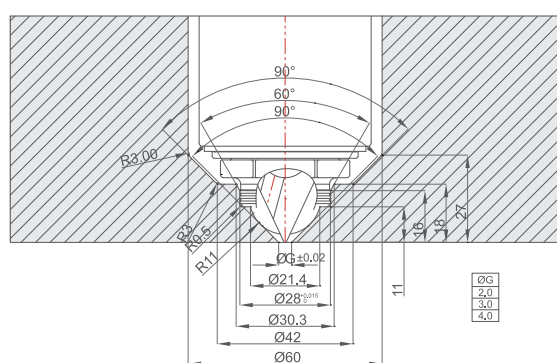
## TINA GP 22 FLANGE



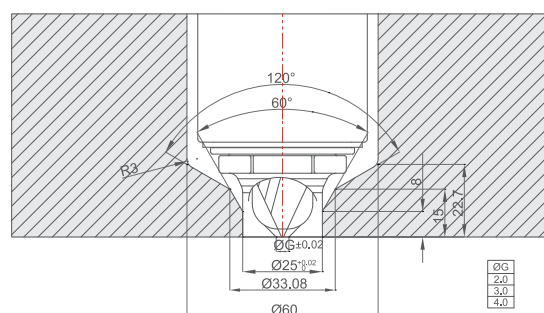
# TINA GP

## TINA GP 22 OPEN GATE

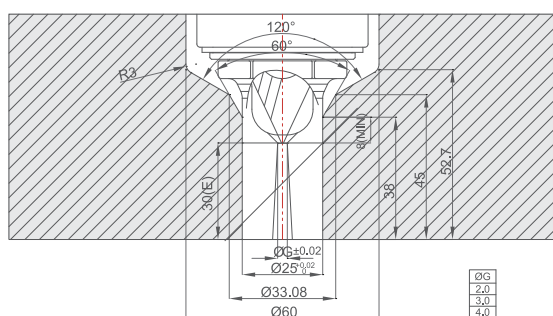
CC



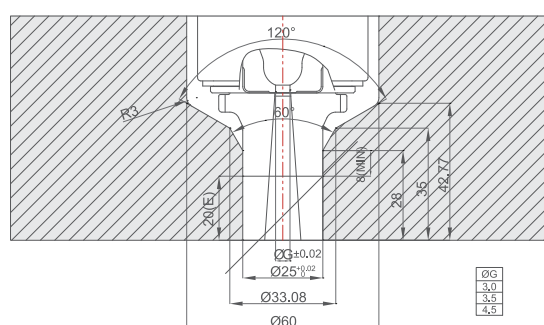
TAC



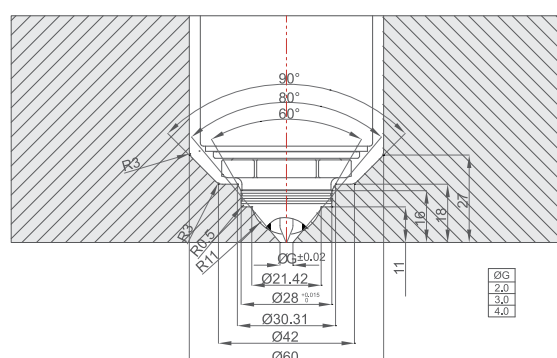
TLC



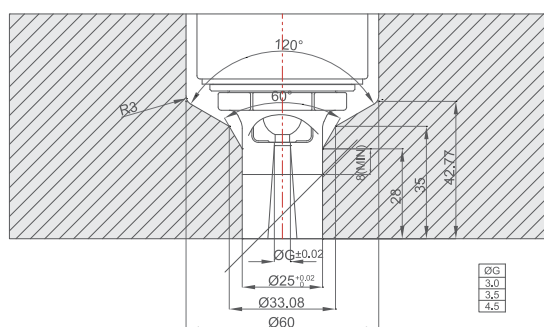
TOE



CT



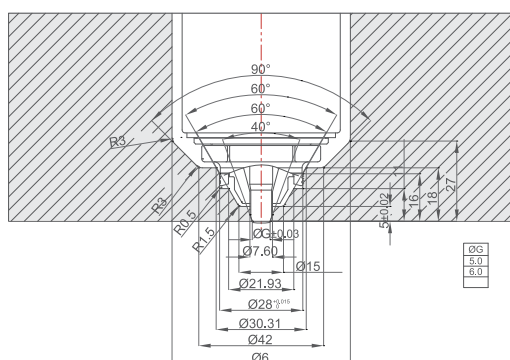
SOE



# TINA GP

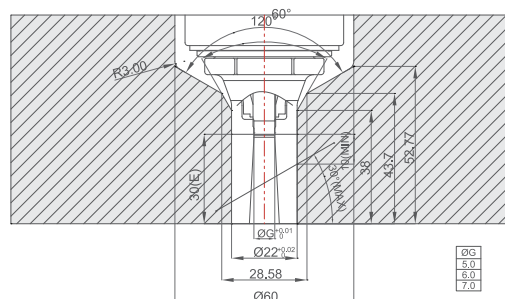
## TINA GP 22 VALVE GATE

VV



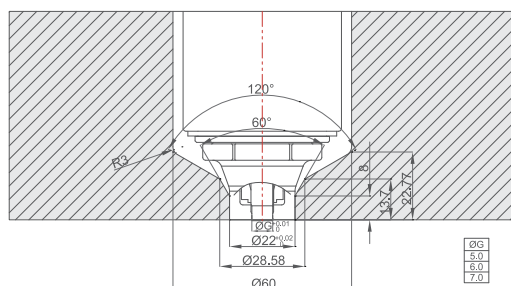
1. Standard tip doesn't include seal cap. In case of white, transparent or color change required, seal cap can be applied as an option.

TVL



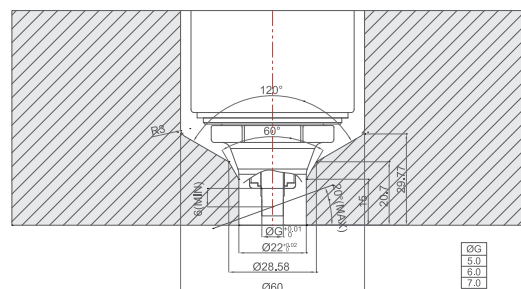
1. Standard tip doesn't include seal cap. In case of white, transparent or color change required, seal cap can be applied as an option.

TVA



1. Standard tip doesn't include seal cap. In case of white, transparent or color change required, seal cap can be applied as an option.

TVAT

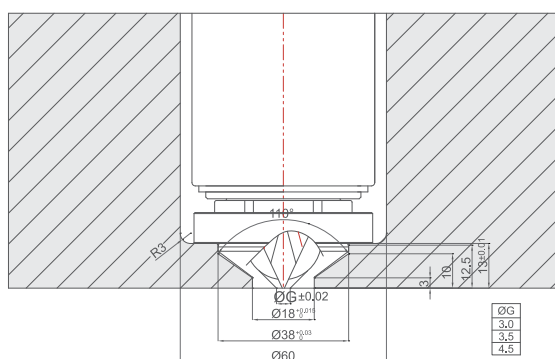


1. Maximum angle – 20°, if over 20° YUDO recommends an angled system or you can contact YUDO Technician.  
2. Standard tip doesn't include seal cap. In case of white, transparent or color change required, seal cap can be applied as an option.

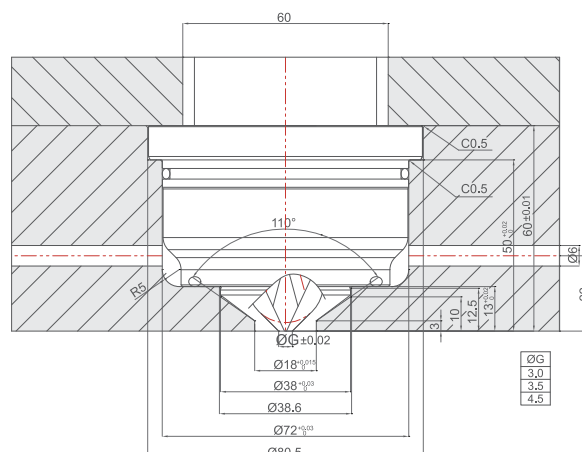
# TINA GP

## TINA GP 22 OPEN GATE BUSH

CA TYPE

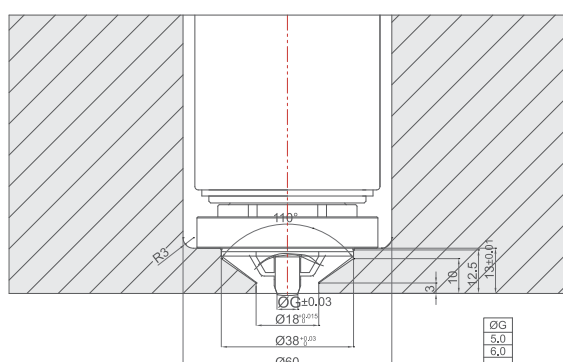


LCF TYPE

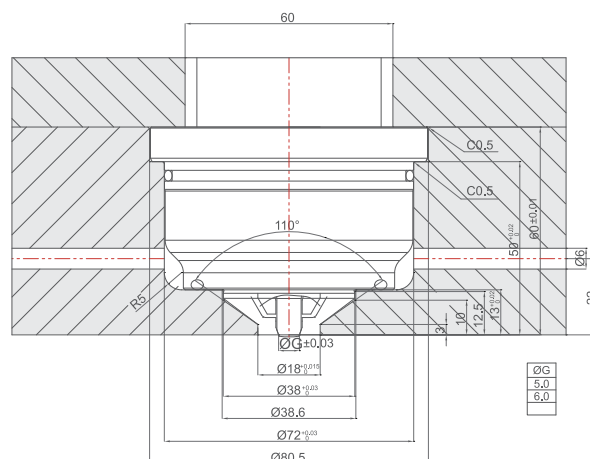


## TINA GP 22 VALVE GATE BUSH

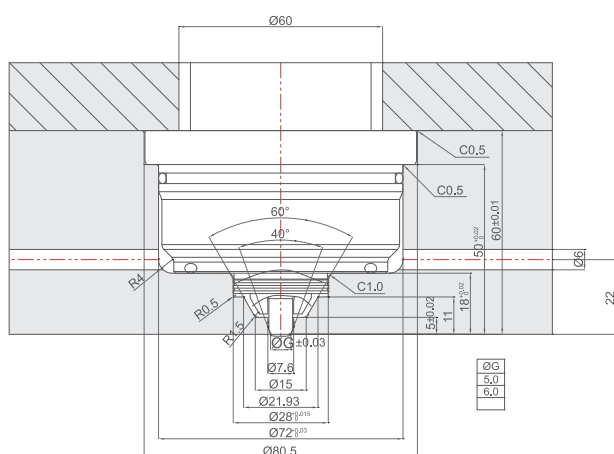
VA TYPE



LVF TYPE



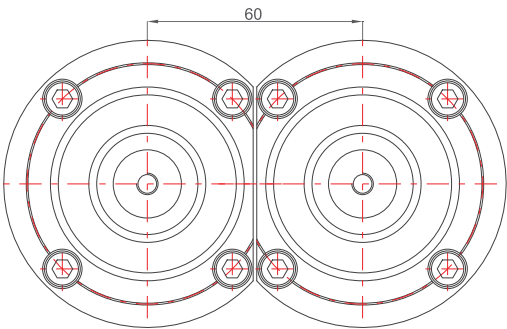
## TINA GP 22 HIDDEN GATE BUSH



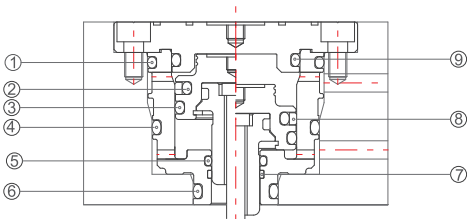
# VC 58 Pneumatic Cylinder

VC 58

## Minimum Pitch and O-ring reference

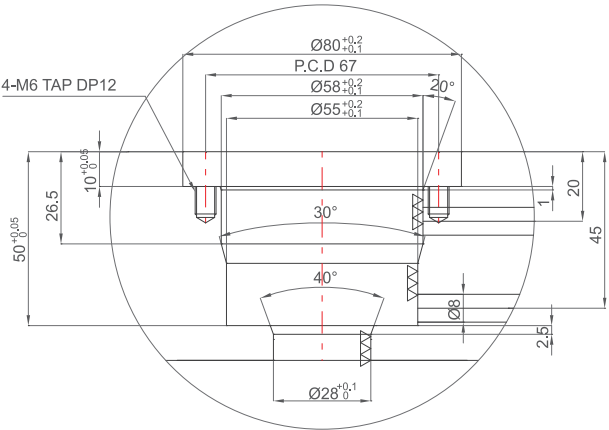


60mm



1	ACRRAV352260
2	ACRRAV352160
3	ACRRAV352190
4	ACRRAV252250
5	ACRRAV261140
6	ACRRAV352120
7	ACRIWR241550
8	ACRGSO440400
9	ACRRAV352210

## Machining Demension



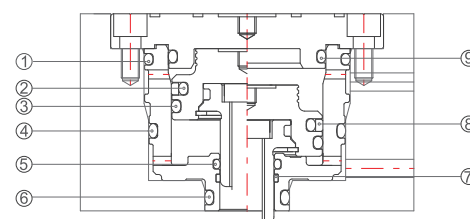
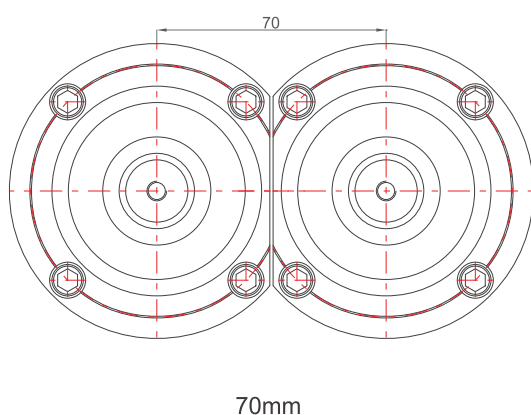
VC58 CYLINDER

Reference	
Media	Air
Pressure	8bar~10bar
Velocity	20 L/min
Reaction Time	0.5s
Pin Stroke	10mm

# VC 68 Pneumatic Cylinder

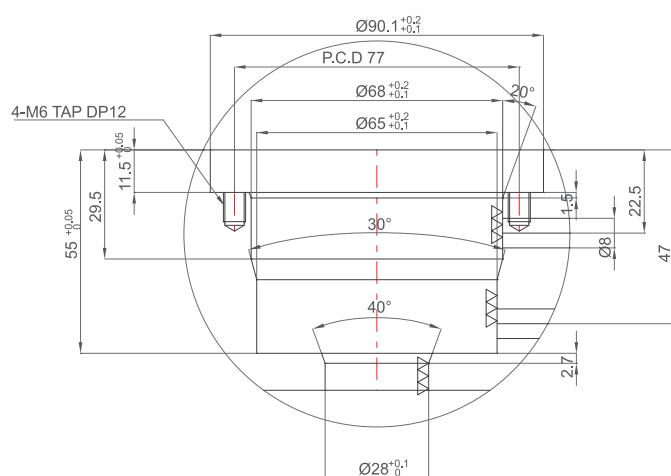
VC 68

## Minimum Pitch and O-ring reference



1	ACRRAV352290
2	ACRRAV352220
3	ACRRAV352230
4	ACRRAV352280
5	ACRRAV261150
6	ACRRAV352120
7	ACRIWR241550
8	ACRGSO440500
9	ACRRAV352240

## Machining Dimension



VC68 CYLINDER

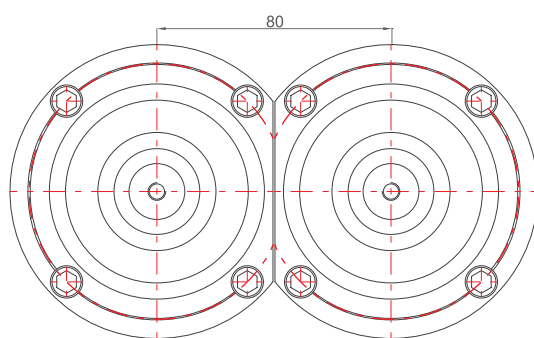
Reference	
Media	Air
Pressure	8bar~10bar
Velocity	20 L/min
Reaction Time	0.5s
Pin Stroke	12mm



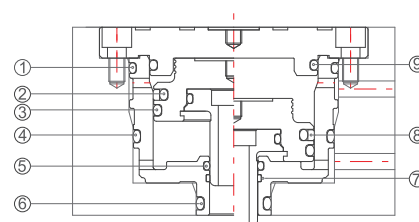
## VC 78 Pneumatic Cylinder

VC 78

### Minimum Pitch and O-ring reference

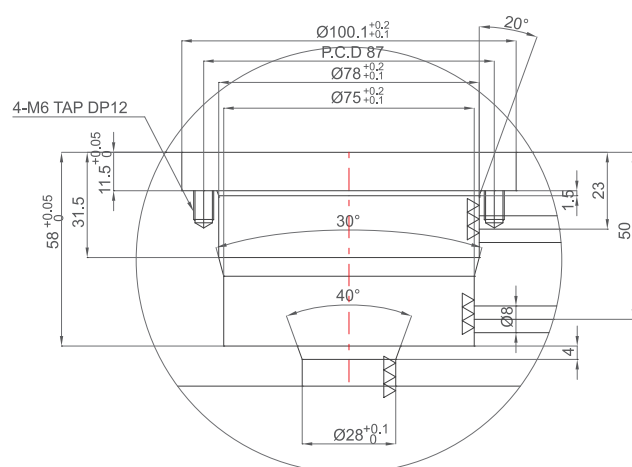


80mm



1	ACRRAV352320
2	ACRRAV352250
3	ACRRAV352270
4	ACRRAV352310
5	ACRRAV261150
6	ACRRAV352120
7	ACRIWR241550
8	ACRGSO440600
9	ACRRAV352280

## Machining Demension



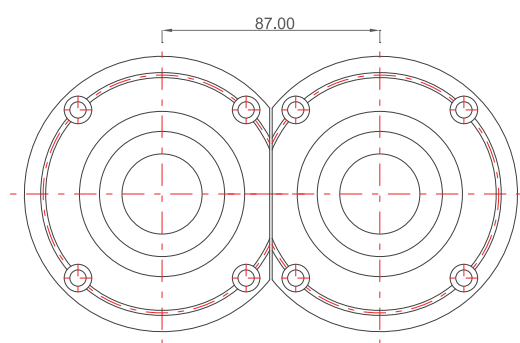
## VC78 CYLINDER

Reference	
Media	Air
Pressure	8bar~10bar
Velocity	20 L/min
Reaction Time	0.5s
Pin Stroke	15mm

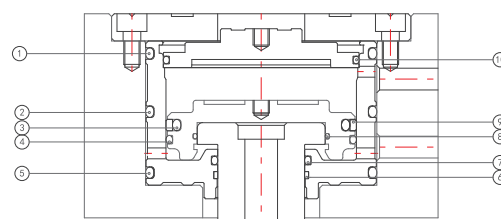
# VC 85 Pneumatic Cylinder

VC 85

## Minimum Pitch and O-ring reference

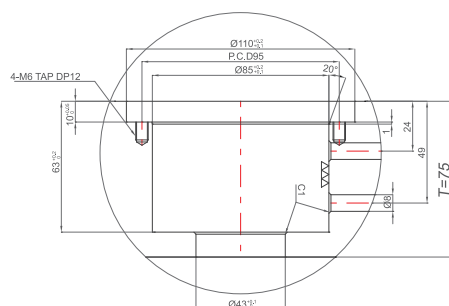


87mm



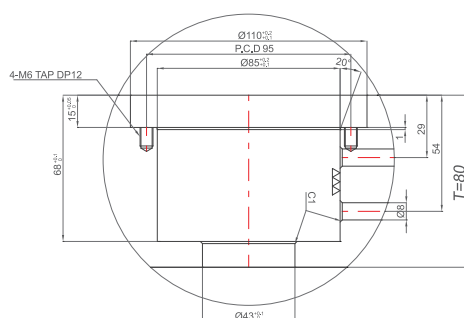
1	ACRRAV352350
2	ACRRAV352350
3	ACRRAV352280
4	ACRRAV261450
5	ACRRAV352350
6	ACRIWR241550
7	ACRRAV261250
8	ACRRAV170320
9	ACRGSO440700
10	ACRRAV261450

## Machining Demension

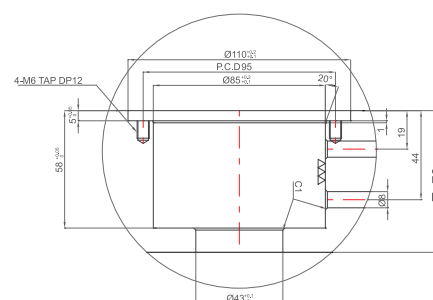


**VC85 CYLINDER**

Reference	
Media	Air
Pressure	8bar~10bar
Velocity	20 L/min
Reaction Time	0.5s
Pin Stroke	15mm



**VC85 CYLINDER**

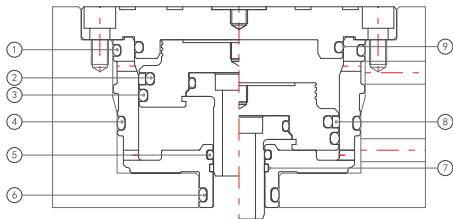
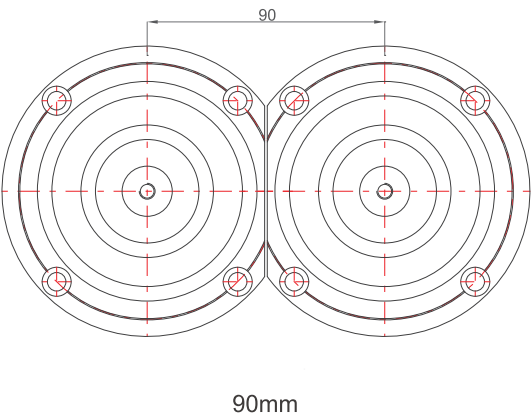


**VC85 CYLINDER**

# VC 88 Pneumatic Cylinder

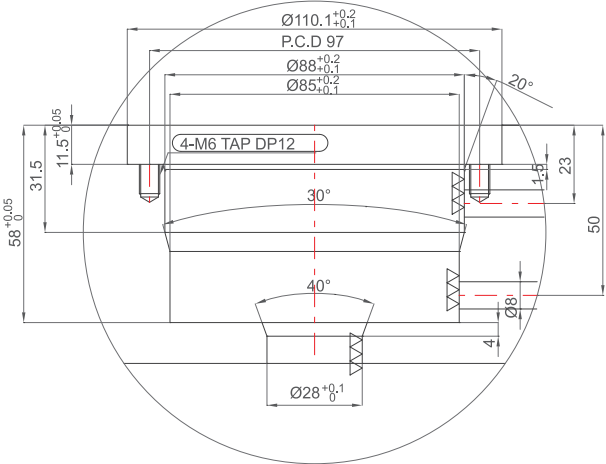
VC 88

## Minimum Pitch and O-ring reference



1	ACRRAV352350
2	ACRRAV352280
3	ACRRAV352300
4	ACRRAV352340
5	ACRRAV261150
6	ACRRAV352120
7	ACRIWR241550
8	ACRGSO440700
9	ACRRAV352310

## Machining Demension



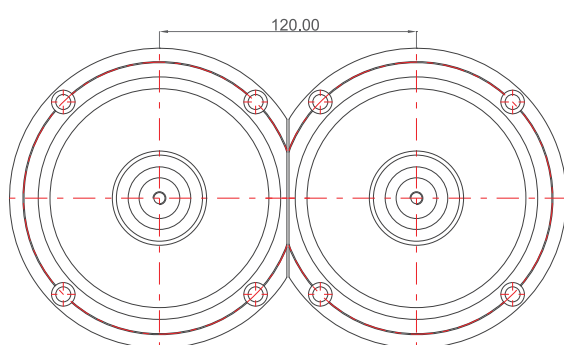
VC88 CYLINDER

Reference	
Media	Air
Pressure	8bar~10bar
Velocity	20 L/min
Reaction Time	0.5s
Pin Stroke	15mm

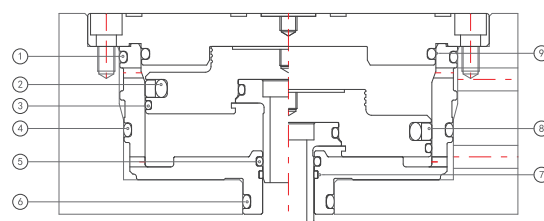
# VC 118 Pneumatic Cylinder

VC 118

## Minimum Pitch and O-ring reference

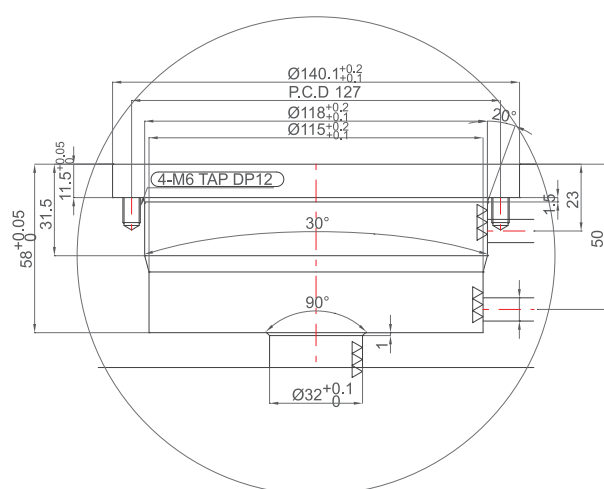


120mm



1	ACRRV352450
2	ACRRV533390
3	ACRRV261540
4	ACRRV352440
5	ACRRV261150
6	ACRRV352140
7	ACRIWR241550
8	ACRGSO441000
9	ACRRV352400

## Machining Demension



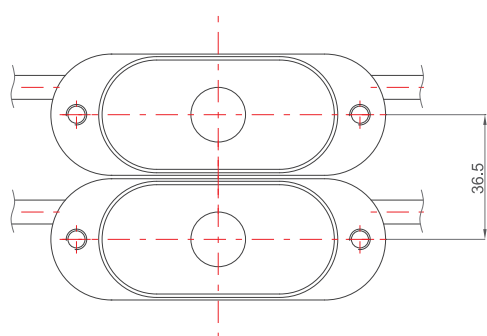
**VC118 CYLINDER**

Reference	
Media	Air
Pressure	8bar~10bar
Velocity	20 L/min
Reaction Time	0.5s
Pin Stroke	15mm

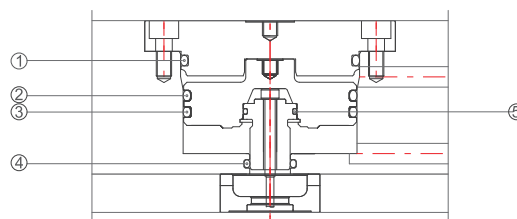
## VEM 50 Pneumatic Cylinder

VEM 50

### Minimum Pitch and O-ring reference

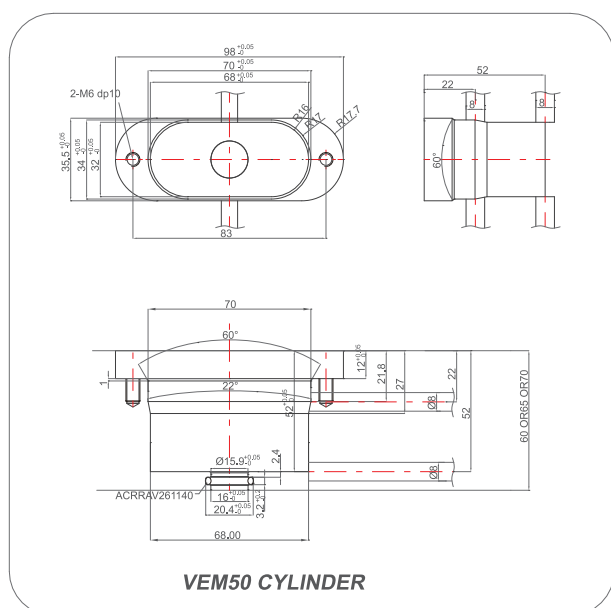


36.5mm



1	ACRRRAV352240
2	ACRRRAV352240
3	ACRRRAV352240
4	ACRRRAV261140
5	ACRRRAV170170

## Machining Demension

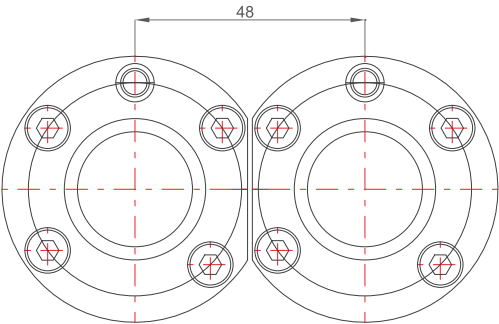


Reference	
Media	Air
Pressure	8bar~10bar
Velocity	20 L/min
Reaction Time	0.5s
Pin Stroke	10mm

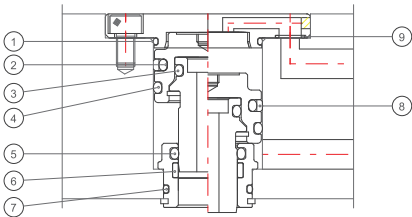
# VCM 29 Pneumatic Cylinder

VCM 29

## Minimum Pitch and O-ring reference

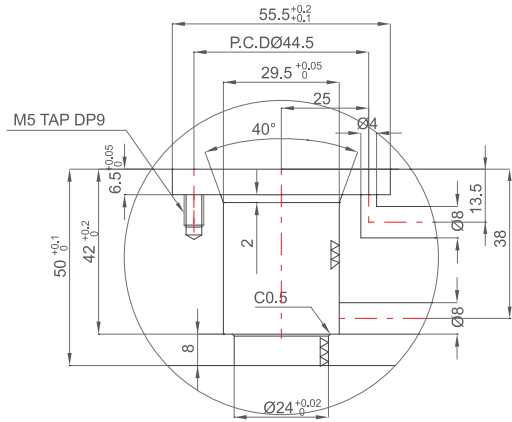


48mm



1	ACRRAV170230
2	ACRRAV261180
3	ACRRAV261120
4	ACRRAV261200
5	ACRRAV261140
6	ACRIWR401550
7	ACRRAV170190
8	ACRGSO440300
9	ACRRAV106000

## Machining Demension



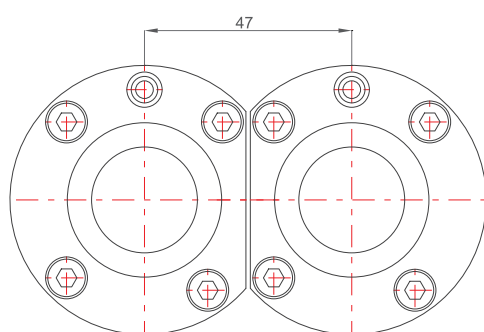
VCM29 CYLINDER

Reference	
Media	Air
Pressure	8bar~10bar
Velocity	20L/min
Reaction Time	0.5s
Pin Stroke	11mm

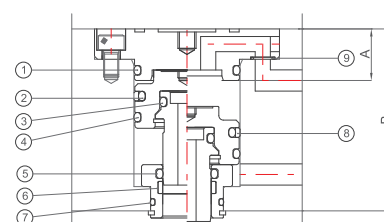
# VCM 35 Pneumatic Cylinder

VCM 35

## Minimum Pitch and O-ring reference

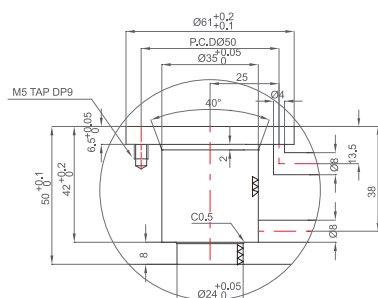


47mm

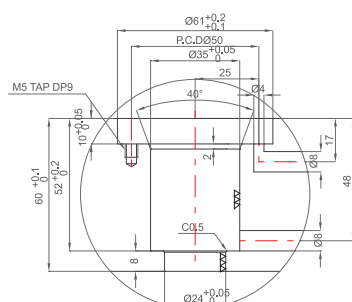


	A=17,B=60	A=9.3,B=50
1	ACRRAV261230	ACRRAV170260
2	ACRRAV261210	
3	ACRRAV261120	
4	ACRRAV261230	
5	ACRRAV261140	
6	ACRIWR401550	
7	ACRRAV170190	
8	ACRGSO440350	
9	ACRRAV106000	

## Machining Demension



**VCM35 CYLINDER (50T)**



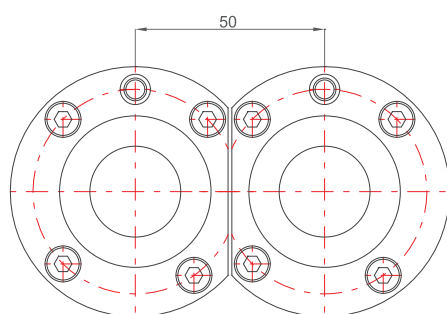
**VCM35 CYLINDER (60T)**

Reference	
Media	Air
Pressure	8bar~10bar
Velocity	20 L/min
Reaction Time	0.5s
Pin Stroke	10.55/12mm

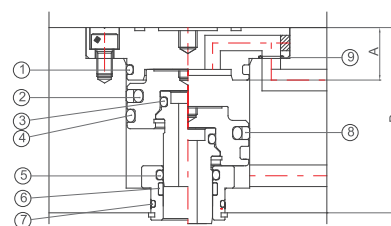
## VCM 40 Pneumatic Cylinder

VCM 40

### Minimum Pitch and O-ring reference

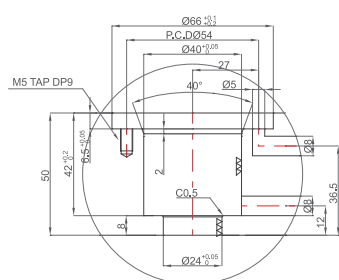


50mm

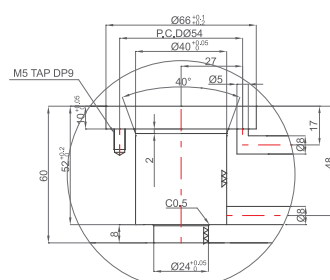


	A=9,B=50	A=17,B=60	A=22,B=65	A=27,B=70
1	ACRRAY170290	ACRRAY261260	ACRRAY352190	ACRRAY352190
2	ACRRAY352160			
3	ACRRAY261120			
4	ACRRAY352190			
5	ACRRAY261140			
6	ACRIWR401550			
7	ACRRAY170190			
8	ACRGSO440400			
9	ACRRAY106000			

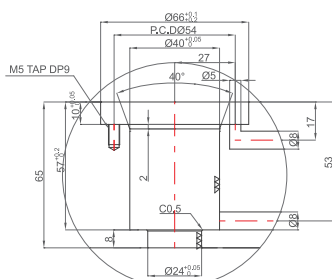
## Machining Demension



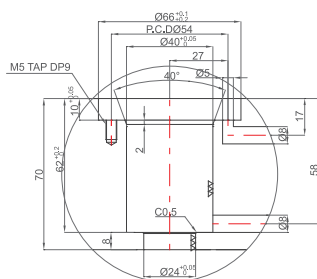
VCM40 CYLINDER (50T)



VCM40 CYLINDER (60T)



VCM40 CYLINDER (65T)



VCM40 CYLINDER (70T)

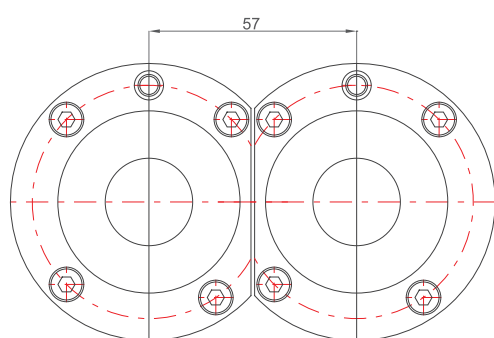
Reference	
Media	Air
Pressure	8bar~10bar
Velocity	20 L/min
Reaction Time	0.5s
Pin Stroke	10.55/12mm



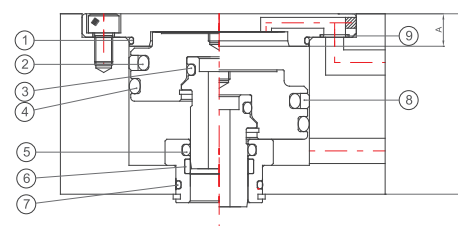
# VCM 50 Pneumatic Cylinder

VCM 50

## Minimum Pitch and O-ring reference

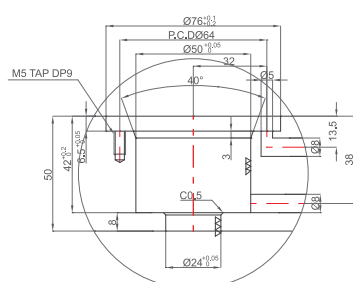


57mm

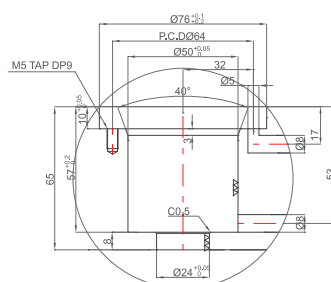


	A=9,B=50	A=22,B=65	A=27,B=70
1	ACRRAV170320	ACRRAV352240	ACRRAV352240
2		ACRRAV352220	
3		ACRRAV261120	
4		ACRRAV352240	
5		ACRRAV261140	
6		ACRIWR401550	
7		ACRRAV170190	
8		ACRGSO440500	
9		ACRRAV106000	

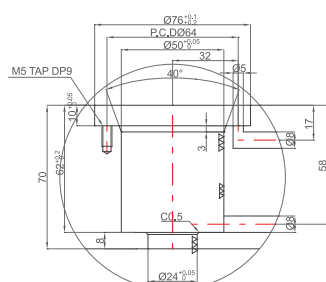
## Machining Demension



VCM50 CYLINDER (50T)



VCM50 CYLINDER (65)



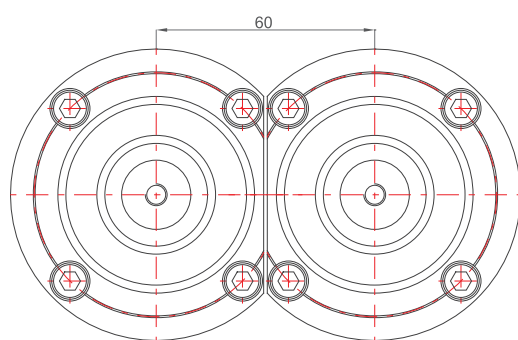
VCM50 CYLINDER (70T)

Reference	
Media	Air
Pressure	8bar~10bar
Velocity	20 L/min
Reaction Time	0.5s
Pin Stroke	10.55/12mm

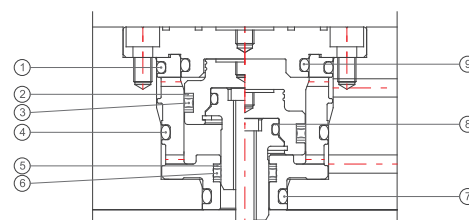
# VCH 58 Hydraulic Cylinder

VCH 58

## Minimum Pitch and O-ring reference

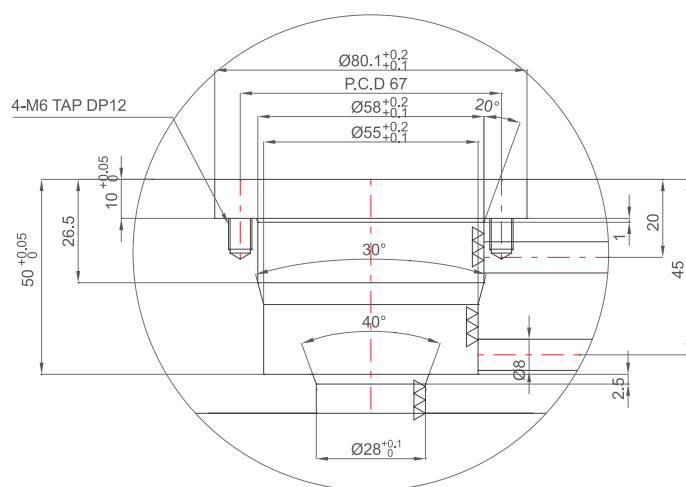


80mm



1	ACRRAV352260
2	BP3200336
3	QRAR04219
4	ACRRAV352250
5	BP2300160
6	QRAR04115
7	ACRRAV352120
8	ACRRAV261150
9	ACRRAV352210

## Machining Demension



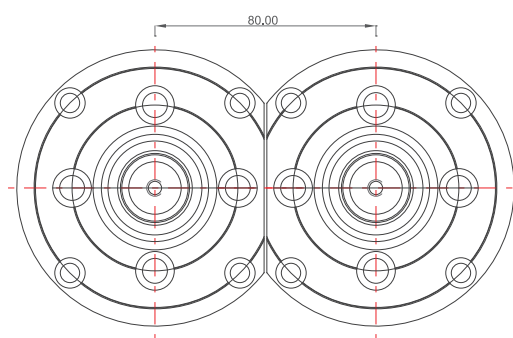
**VCH58 CYLINDER**

Reference	
Media	Oil
Pressure	40bar~60bar
Velocity	3 L/min
Reaction Time	0.5s
Pin Stroke	10mm

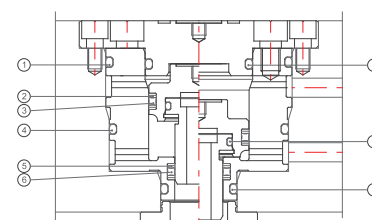
# VCH 78 Hydraulic Cylinder

VCH 78

## Minimum Pitch and O-ring reference

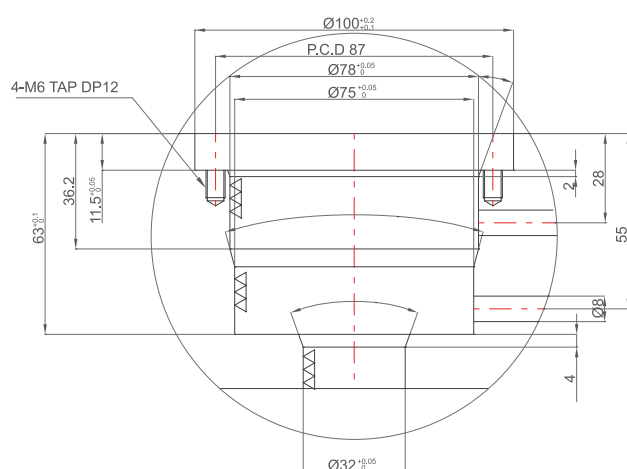


80mm



1	ACRRAV352320
2	BP3200356
3	QRAR04220
4	ACRRAV352310
5	BP3200200
6	QRAR04211
7	ACRRAV352140
8	ACRRAV261190
9	ACRRAV352220

## Machining Demension



VCH78 CYLINDER

Reference	
Media	Oil
Pressure	40bar~60bar
Velocity	3 L/min
Reaction Time	0.5s
Pin Stroke	15mm