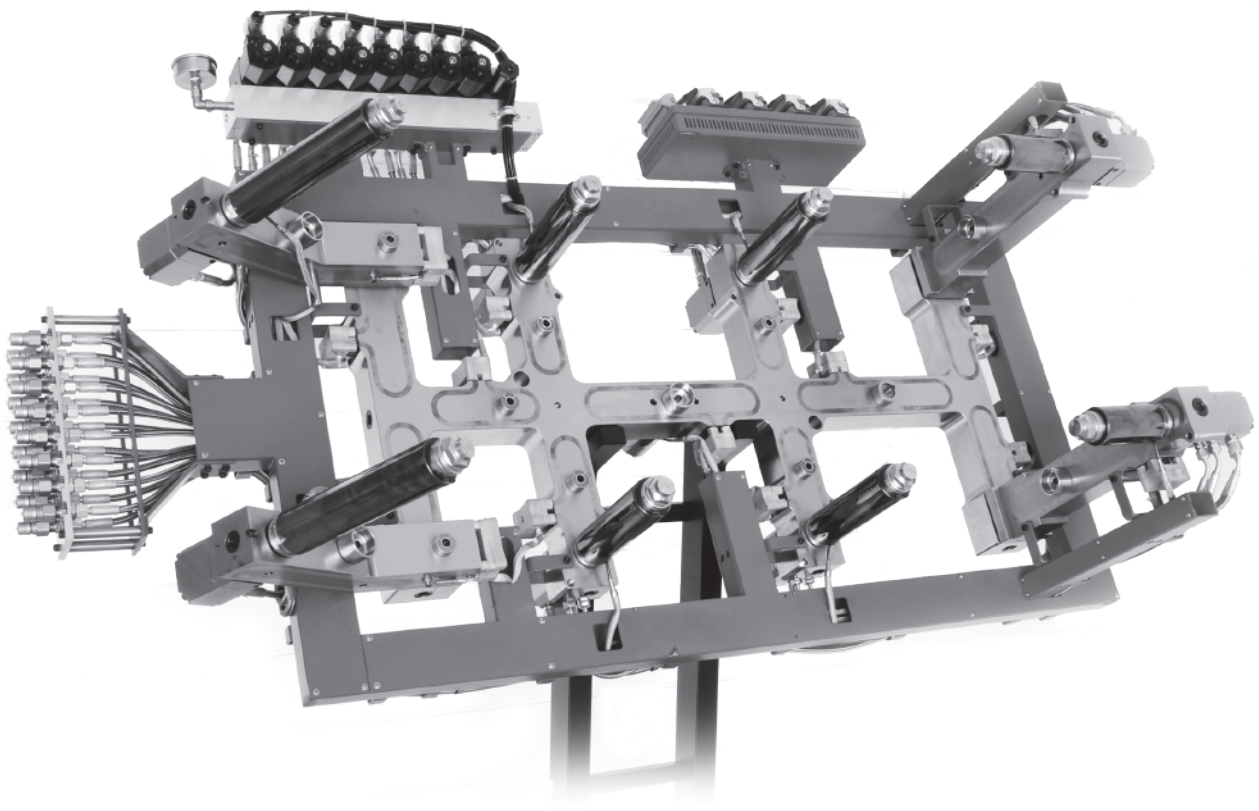


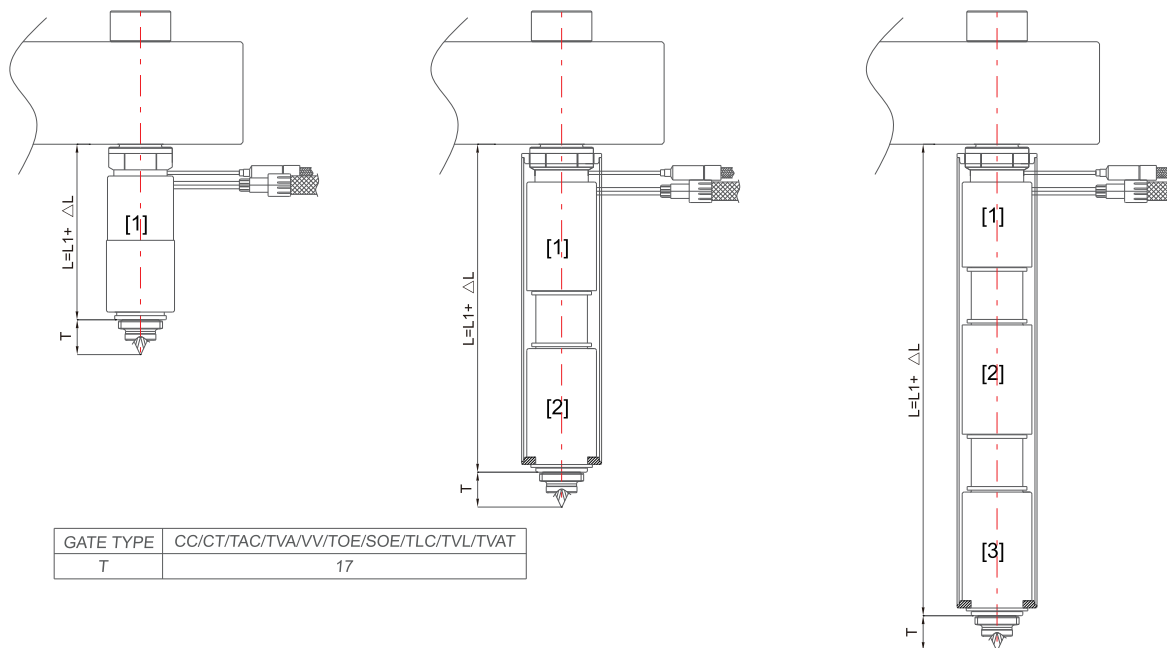
YUDO®

Integrated Engineering Solution



TINA AM Technical Data

TINA AM 10 NOZZLE



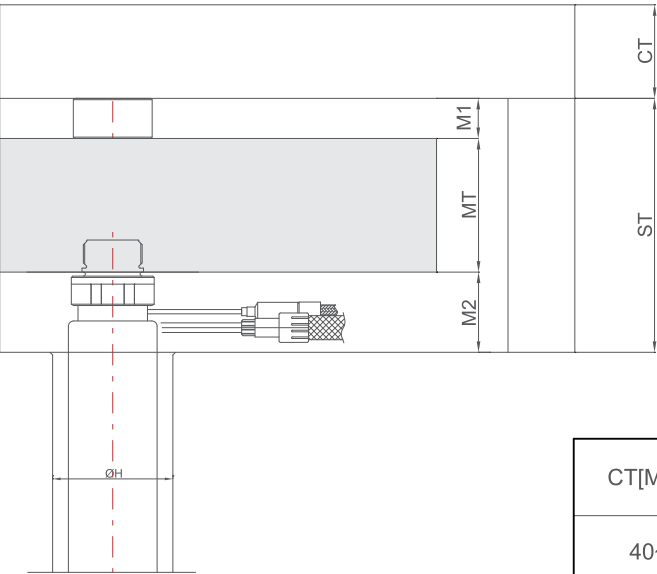
TAM10□□155□□

IC (J) , CA (K)

CC,CT,TAC,TVA,VV,TOE,SOE,TLC,TVL,TVAT

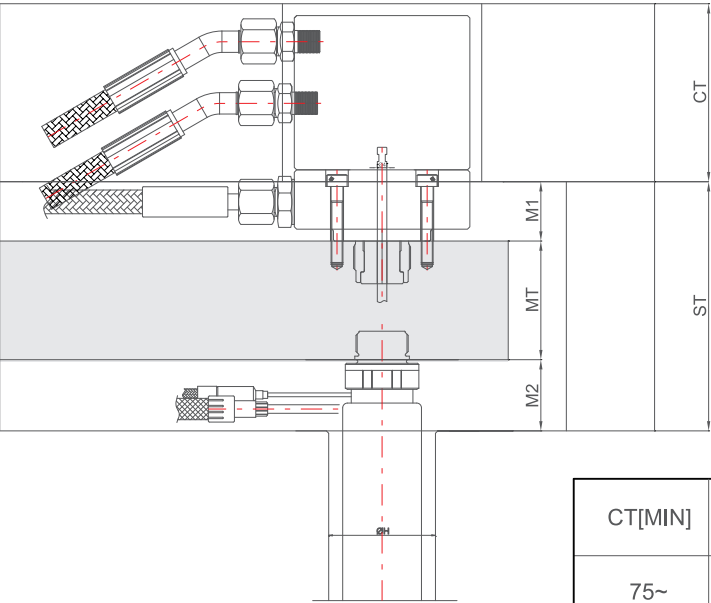
Code	L	Heater-1	TC-1	Heater-2	TC-2	Heater-3	TC-3
		Code	Code	Code	Code	Code	Code
TAM10 □□ 085 □□	59.90 - 69.92	HTTA22250430	NZTPIC[CA]161050				
TAM10 □□ 095 □□	69.93 - 79.94	HTTA22250530	NZTPIC[CA]161050				
TAM10 □□ 105 □□	79.95 - 89.97	HTTA22250630	NZTPIC[CA]161250				
TAM10 □□ 115 □□	89.98 - 99.99	HTTA22250730	NZTPIC[CA]161250				
TAM10 □□ 125 □□	100.00 - 110.01	HTTA22250830	NZTPIC[CA]161450				
TAM10 □□ 135 □□	110.02 - 120.04	HTTA22250930	NZTPIC[CA]161450				
TAM10 □□ 145 □□	120.05 - 130.06	HTTA22251030	NZTPIC[CA]161650				
TAM10 □□ 155 □□	130.07 - 140.09	HTTA22251130	NZTPIC[CA]161650				
TAM10 □□ 165 □□	140.10 - 150.11	HTTA22251230	NZTPIC[CA]161850				
TAM10 □□ 175 □□	150.12 - 160.13	HTTA22251330	NZTPIC[CA]161850				
TAM10 □□ 185 □□	160.14 - 170.16	HTTA22251430	NZTPIC[CA]162050				
TAM10 □□ 195 □□	170.17 - 179.99	HTTA22251530	NZTPIC[CA]162050				
TAM10 □□ 205 □□	180.00 - 199.99	HTFRAL250730	NZTPIC[CA]161050	HTGT25270053	NZTPIC[CA]162050		
TAM10 □□ 225 □□	200.00 - 219.99	HTFRAL250930	NZTPIC[CA]161050	HTGT25270053	NZTPIC[CA]162250		
TAM10 □□ 245 □□	220.00 - 239.99	HTFRAL251130	NZTPIC[CA]161250	HTGT25270053	NZTPIC[CA]162450		
TAM10 □□ 265 □□	240.00 - 259.99	HTFRAL251330	NZTPIC[CA]161250	HTGT25270053	NZTPIC[CA]162650		
TAM10 □□ 285 □□	260.00 - 279.99	HTFRAL251530	NZTPIC[CA]161450	HTGT25270053	NZTPIC[CA]162850		
TAM10 □□ 305 □□	280.00 - 299.99	HTFRAL251730	NZTPIC[CA]161450	HTGT25270053	NZTPIC[CA]163050		
TAM10 □□ 325 □□	300.00 - 319.99	HTFRAL251930	NZTPIC[CA]161650	HTGT25370053	NZTPIC[CA]163250		
TAM10 □□ 345 □□	320.00 - 339.99	HTFRAL252130	NZTPIC[CA]161650	HTGT25370053	NZTPIC[CA]163450		
TAM10 □□ 365 □□	340.00 - 359.99	HTFRAL250730	NZTPIC[CA]161050	HTSDAL251330	NZTPIC[CA]162250	HTGT25370053	NZTPIC[CA]163650
TAM10 □□ 385 □□	360.00 - 379.99	HTFRAL250930	NZTPIC[CA]161050	HTSDAL251330	NZTPIC[CA]162450	HTGT25370053	NZTPIC[CA]163850
TAM10 □□ 405 □□	380.00 - 399.99	HTFRAL251130	NZTPIC[CA]161250	HTSDAL251330	NZTPIC[CA]162650	HTGT25370053	NZTPIC[CA]164050
TAM10 □□ 425 □□	400.00 - 419.99	HTFRAL251330	NZTPIC[CA]161250	HTSDAL251330	NZTPIC[CA]162850	HTGT25470053	NZTPIC[CA]164550
TAM10 □□ 445 □□	420.00 - 439.99	HTFRAL251530	NZTPIC[CA]161450	HTSDAL251330	NZTPIC[CA]163050	HTGT25470053	NZTPIC[CA]164550
TAM10 □□ 465 □□	440.00 - 459.99	HTFRAL251730	NZTPIC[CA]161450	HTSDAL251330	NZTPIC[CA]163250	HTGT25470053	NZTPIC[CA]165050
TAM10 □□ 485 □□	460.00 - 479.99	HTFRAL251930	NZTPIC[CA]161650	HTSDAL251330	NZTPIC[CA]163450	HTGT25470053	NZTPIC[CA]165050
TAM10 □□ 505 □□	480.00 - 499.99	HTFRAL252130	NZTPIC[CA]161650	HTSDAL251330	NZTPIC[CA]163650	HTGT25470053	NZTPIC[CA]165050
TAM10 □□ 525 □□	500.00 - 519.99	HTFRAL251930	NZTPIC[CA]161650	HTSDAL251730	NZTPIC[CA]163650	HTGT25470053	NZTPIC[CA]165550
TAM10 □□ 545 □□	520.00 - 539.99	HTFRAL252130	NZTPIC[CA]161650	HTSDAL251730	NZTPIC[CA]163850	HTGT25470053	NZTPIC[CA]165550

TINA AM 10 OPEN SYSTEM

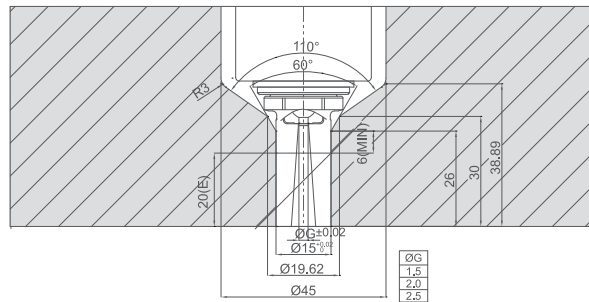
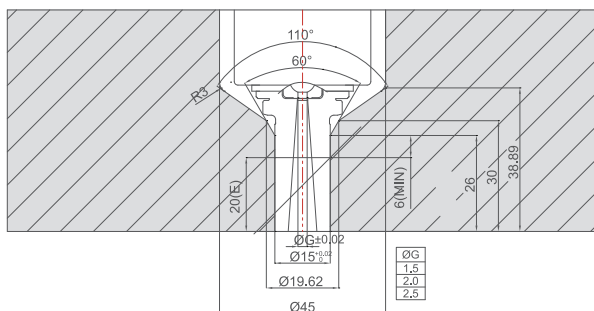
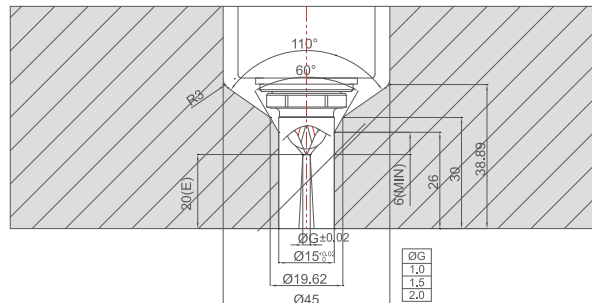
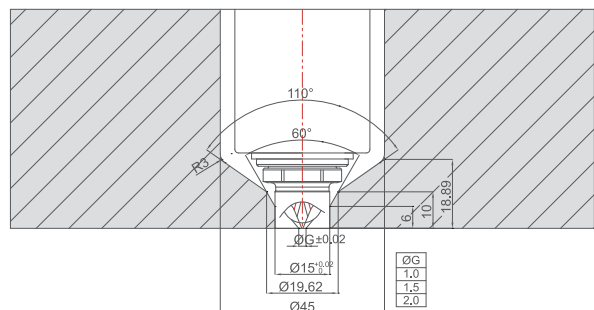
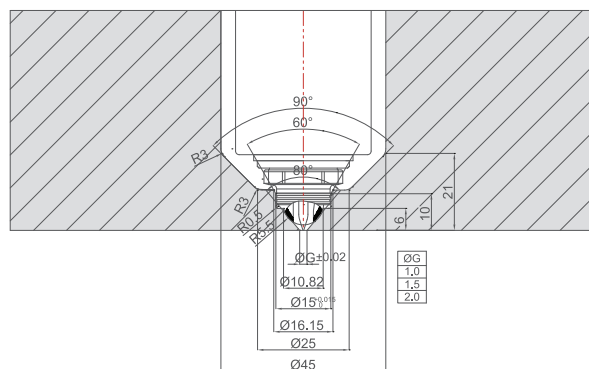
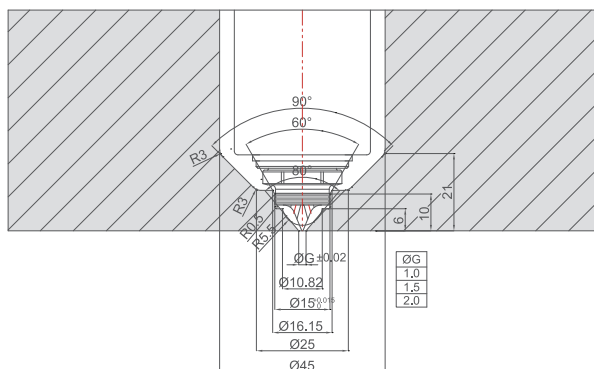


CT[MIN]	ST	MT	M1	M2	ØH
40~	95~	50	15	30	45

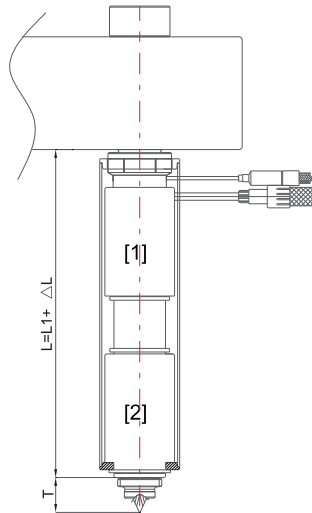
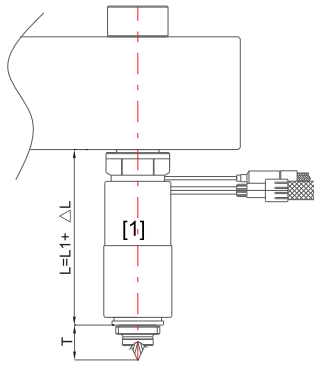
TINA AM 10 VALVE SYSTEM



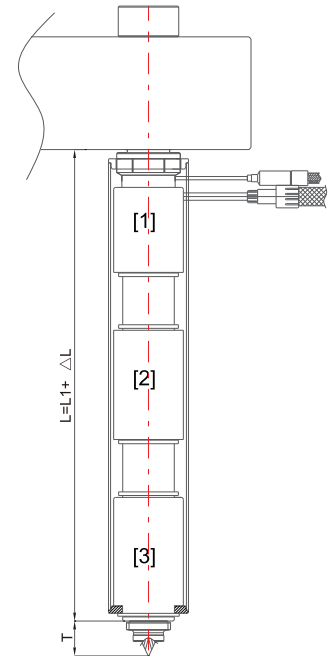
CT[MIN]	ST	MT	M1	M2	ØH
75~	105~	50	25	30	45



TINA AM 12 NOZZLE



GATE TYPE	CC/CT/TAC/TVA/VV/TOE/SOE/TLC/TVL/TVAT
T	19



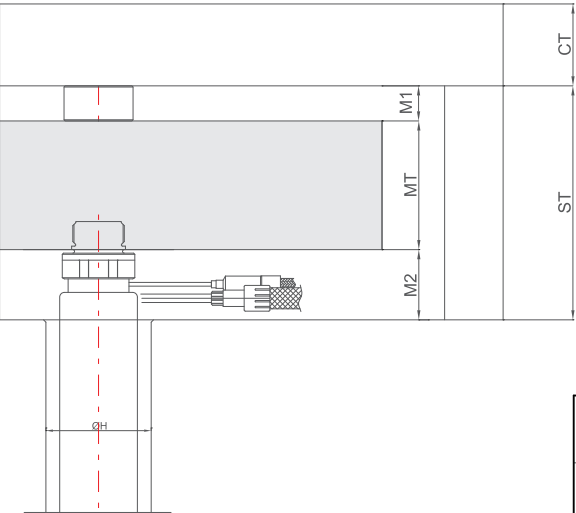
TAM12□□155□□

IC (J) , CA (K)

CC,CT,TAC,TVA,VV,TOE,SOE,TLC,TVL,TVAT

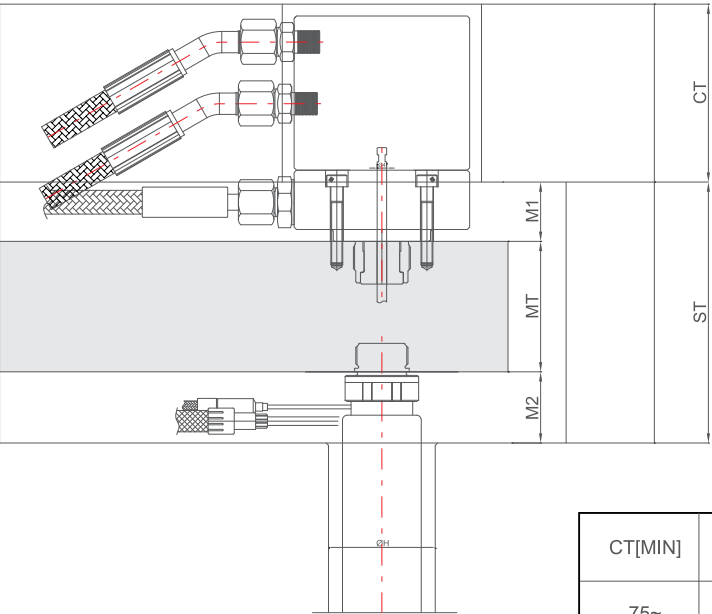
Code	L	Heater-1	TC-1	Heater-2	TC-2	Heater-3	TC-3
		Code	Code	Code	Code	Code	Code
TAM12 □□ 085 □□	59.90 - 69.92	HTTA22250430	NZTPIC[CA]161050				
TAM12 □□ 095 □□	69.93 - 79.94	HTTA22250530	NZTPIC[CA]161050				
TAM12 □□ 105 □□	79.95 - 89.97	HTTA22250630	NZTPIC[CA]161250				
TAM12 □□ 115 □□	89.98 - 99.99	HTTA22250730	NZTPIC[CA]161250				
TAM12 □□ 125 □□	100.00 - 110.01	HTTA22250830	NZTPIC[CA]161450				
TAM12 □□ 135 □□	110.02 - 120.04	HTTA22250930	NZTPIC[CA]161450				
TAM12 □□ 145 □□	120.05 - 130.06	HTTA22251030	NZTPIC[CA]161650				
TAM12 □□ 155 □□	130.07 - 140.09	HTTA22251130	NZTPIC[CA]161650				
TAM12 □□ 165 □□	140.10 - 150.11	HTTA22251230	NZTPIC[CA]161850				
TAM12 □□ 175 □□	150.12 - 160.13	HTTA22251330	NZTPIC[CA]161850				
TAM12 □□ 185 □□	160.14 - 170.16	HTTA22251430	NZTPIC[CA]162050				
TAM12 □□ 195 □□	170.17 - 179.99	HTTA22251530	NZTPIC[CA]162050				
TAM12 □□ 205 □□	180.00 - 199.99	HTFRAL250730	NZTPIC[CA]161050	HTGT25270053	NZTPIC[CA]162050		
TAM12 □□ 225 □□	200.00 - 219.99	HTFRAL250930	NZTPIC[CA]161050	HTGT25270053	NZTPIC[CA]162250		
TAM12 □□ 245 □□	220.00 - 239.99	HTFRAL251130	NZTPIC[CA]161250	HTGT25270053	NZTPIC[CA]162450		
TAM12 □□ 265 □□	240.00 - 259.99	HTFRAL251330	NZTPIC[CA]161250	HTGT25270053	NZTPIC[CA]162650		
TAM12 □□ 285 □□	260.00 - 279.99	HTFRAL251530	NZTPIC[CA]161450	HTGT25270053	NZTPIC[CA]162850		
TAM12 □□ 305 □□	280.00 - 299.99	HTFRAL251730	NZTPIC[CA]161450	HTGT25270053	NZTPIC[CA]163050		
TAM12 □□ 325 □□	300.00 - 319.99	HTFRAL251930	NZTPIC[CA]161650	HTGT25370053	NZTPIC[CA]163250		
TAM12 □□ 345 □□	320.00 - 339.99	HTFRAL252130	NZTPIC[CA]161650	HTGT25370053	NZTPIC[CA]163450		
TAM12 □□ 365 □□	340.00 - 359.99	HTFRAL250730	NZTPIC[CA]161050	HTSDAL251330	NZTPIC[CA]162250	HTGT25370053	NZTPIC[CA]163650
TAM12 □□ 385 □□	360.00 - 379.99	HTFRAL250930	NZTPIC[CA]161050	HTSDAL251330	NZTPIC[CA]162450	HTGT25370053	NZTPIC[CA]163850
TAM12 □□ 405 □□	380.00 - 399.99	HTFRAL251130	NZTPIC[CA]161250	HTSDAL251330	NZTPIC[CA]162650	HTGT25370053	NZTPIC[CA]164050
TAM12 □□ 425 □□	400.00 - 419.99	HTFRAL251330	NZTPIC[CA]161250	HTSDAL251330	NZTPIC[CA]162850	HTGT25470053	NZTPIC[CA]164550
TAM12 □□ 445 □□	420.00 - 439.99	HTFRAL251530	NZTPIC[CA]161450	HTSDAL251330	NZTPIC[CA]163050	HTGT25470053	NZTPIC[CA]164550
TAM12 □□ 465 □□	440.00 - 459.99	HTFRAL251730	NZTPIC[CA]161450	HTSDAL251330	NZTPIC[CA]163250	HTGT25470053	NZTPIC[CA]165050
TAM12 □□ 485 □□	460.00 - 479.99	HTFRAL251930	NZTPIC[CA]161650	HTSDAL251330	NZTPIC[CA]163450	HTGT25470053	NZTPIC[CA]165050
TAM12 □□ 505 □□	480.00 - 499.99	HTFRAL252130	NZTPIC[CA]161650	HTSDAL251330	NZTPIC[CA]163650	HTGT25470053	NZTPIC[CA]165050
TAM12 □□ 525 □□	500.00 - 519.99	HTFRAL251930	NZTPIC[CA]161650	HTSDAL251730	NZTPIC[CA]163650	HTGT25470053	NZTPIC[CA]165550
TAM12 □□ 545 □□	520.00 - 539.99	HTFRAL252130	NZTPIC[CA]161650	HTSDAL251730	NZTPIC[CA]163850	HTGT25470053	NZTPIC[CA]165550

TINA AM 12 OPEN SYSTEM



CT[MIN]	ST	MT	M1	M2	ØH
40~	100~	55	15	30	45

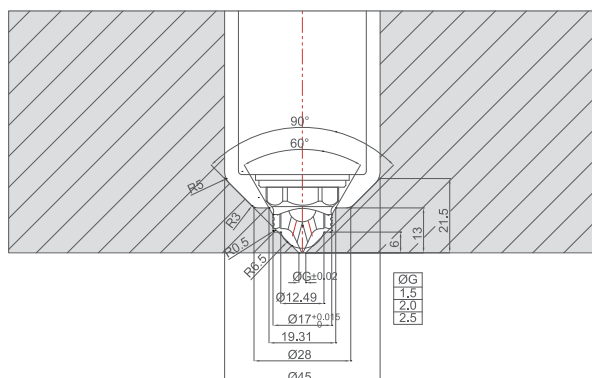
TINA AM 12 VALVE SYSTEM



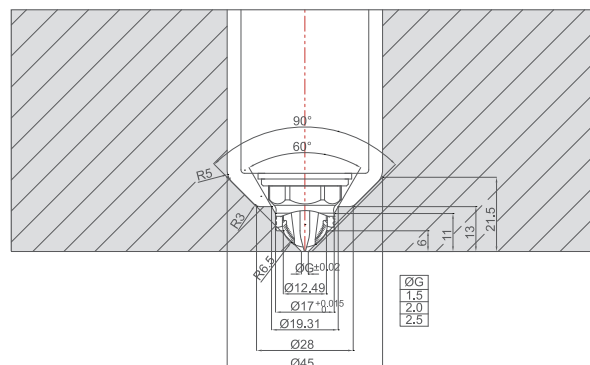
CT[MIN]	ST	MT	M1	M2	ØH
75~	110~	55	25	30	45

TINA AM 12 OPEN GATE

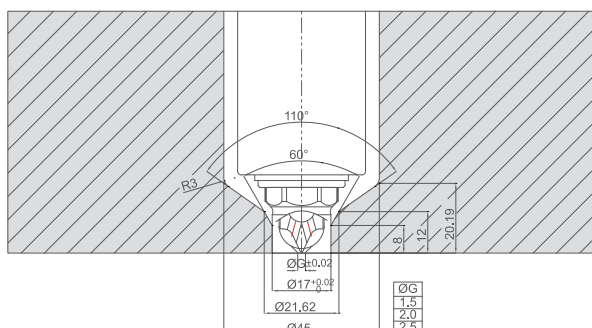
CC



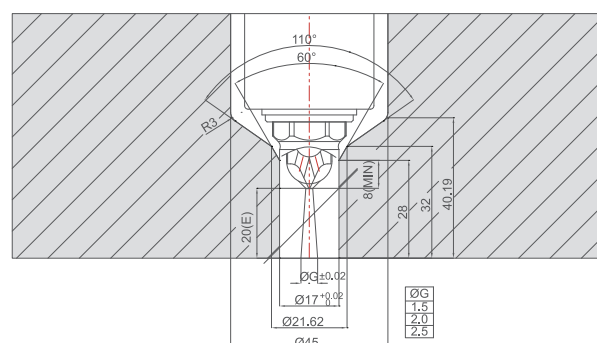
CT



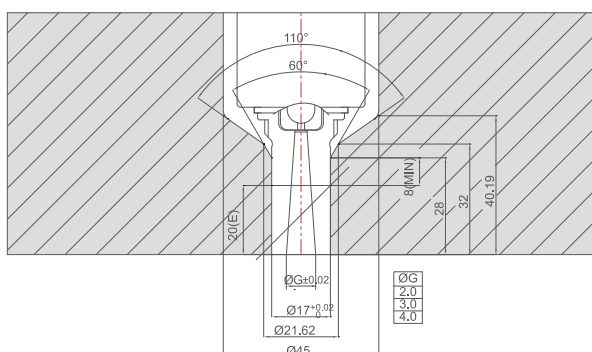
TAC



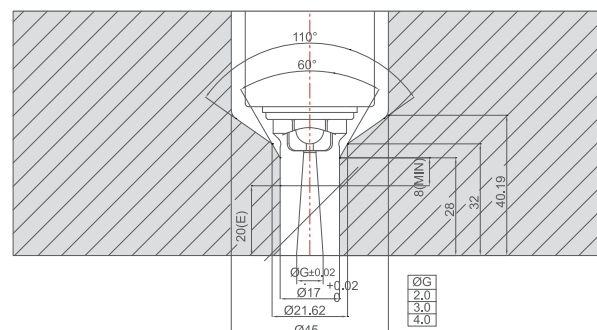
TLC



TOE

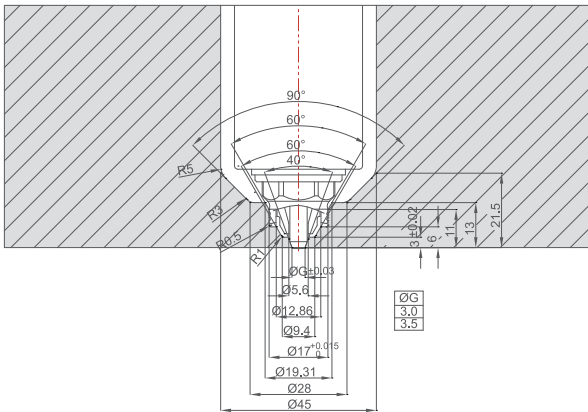


SOE



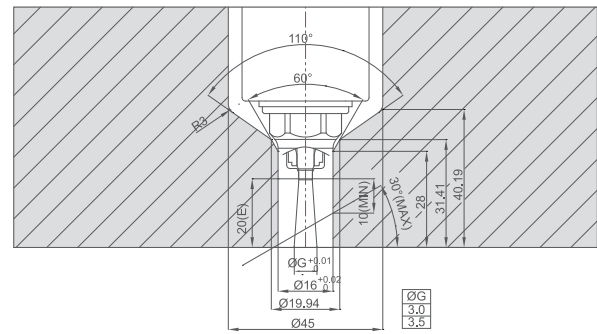
TINA AM 12 VALVE GATE

VV



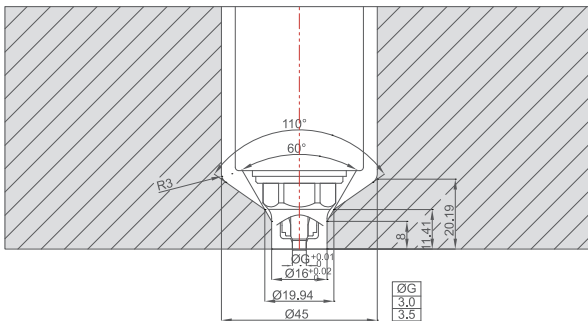
1. Standard tip doesn't include seal cap. In case of white, transparent or color change required, seal cap can be applied as an option.

TVL



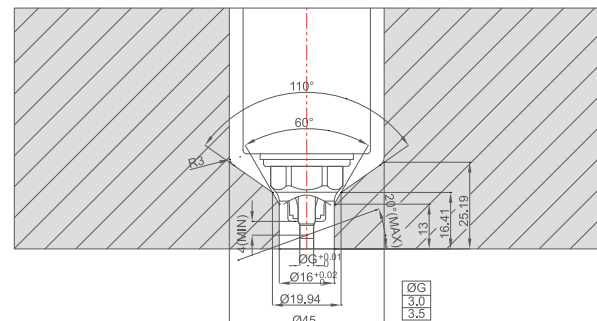
1. Standard tip doesn't include seal cap. In case of white, transparent or color change required, seal cap can be applied as an option.

TVA



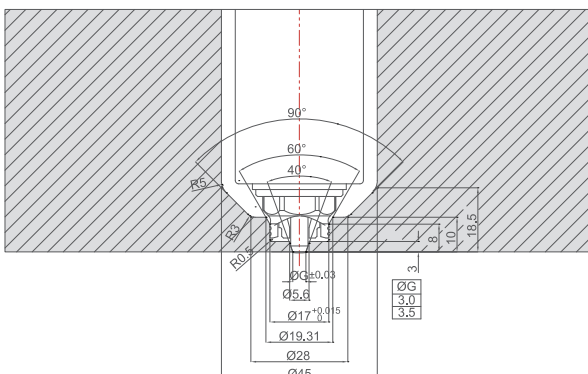
1. Standard tip doesn't include seal cap. In case of white, transparent or color change required, seal cap can be applied as an option.

TVAT



1. Maximum angle – 20°, if over 20° YUDO recommend angled system or you can contact YUDO Technician.
2. Standard tip doesn't include seal cap. In case of white, transparent or color change required, seal cap can be applied as an option.

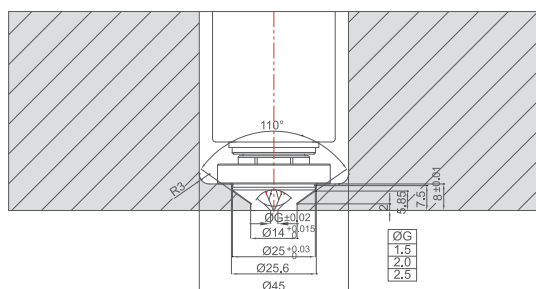
VVS



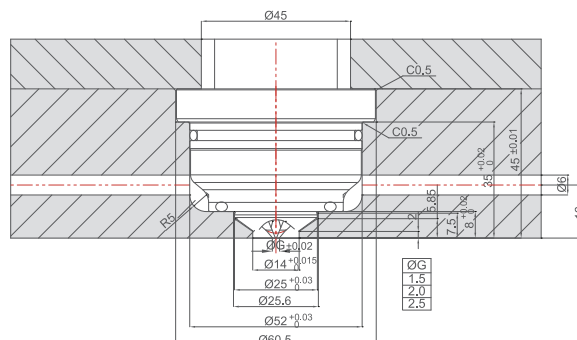
1. Standard tip doesn't include seal cap. In case of white, transparent or color change required, seal cap can be applied as an option.

TINA AM 12 OPEN GATE BUSH

CA TYPE

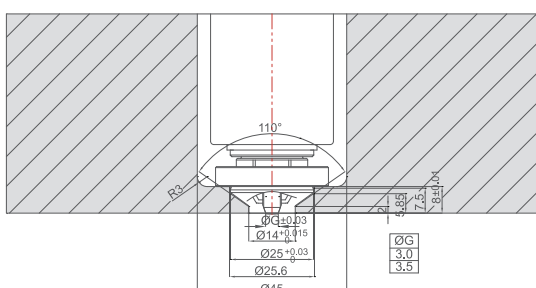


LCF TYPE

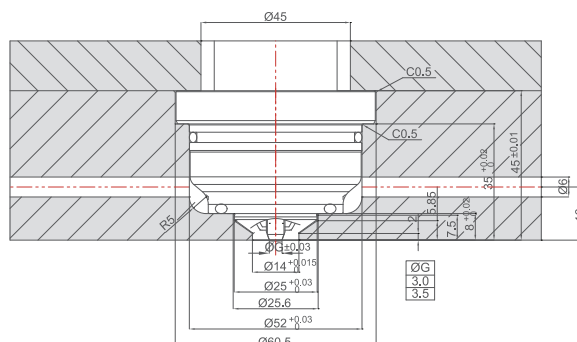


TINA AM 12 VALVE GATE BUSH

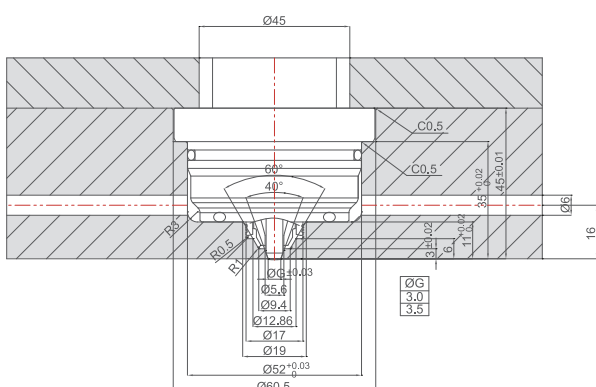
VA TYPE



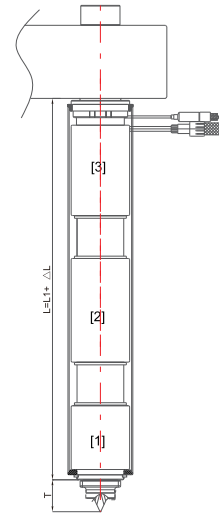
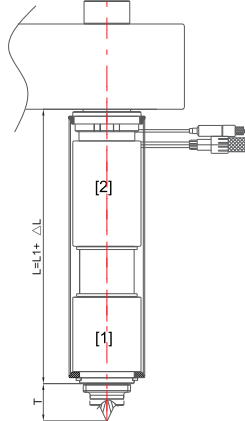
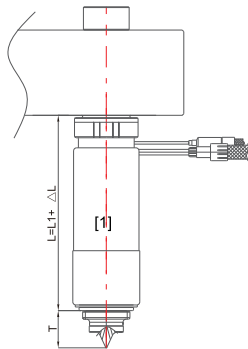
LVF TYPE



TINA AM 12 HIDDEN GATE BUSH



TINA AM 15 NOZZLE



GATE TYPE	CC/CT/TAC/TVA/VV/TOE/SOE/TLC/TVL/TVAT
T	24

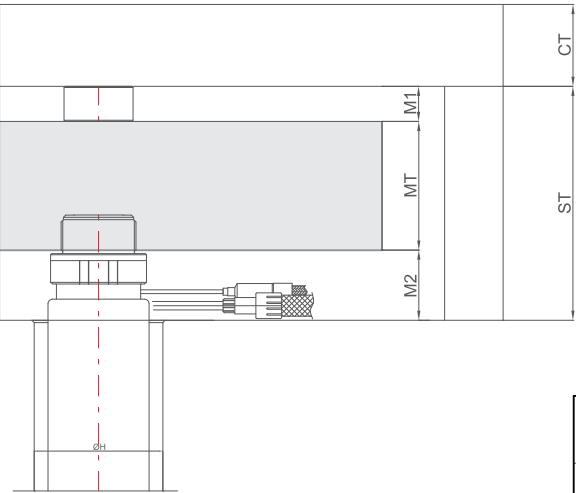
TAM15□□155□□

IC (J) , CA (K)

CC,CT,TAC,TVA,VV,TOE,SOE,TLC,TVL,TVAT

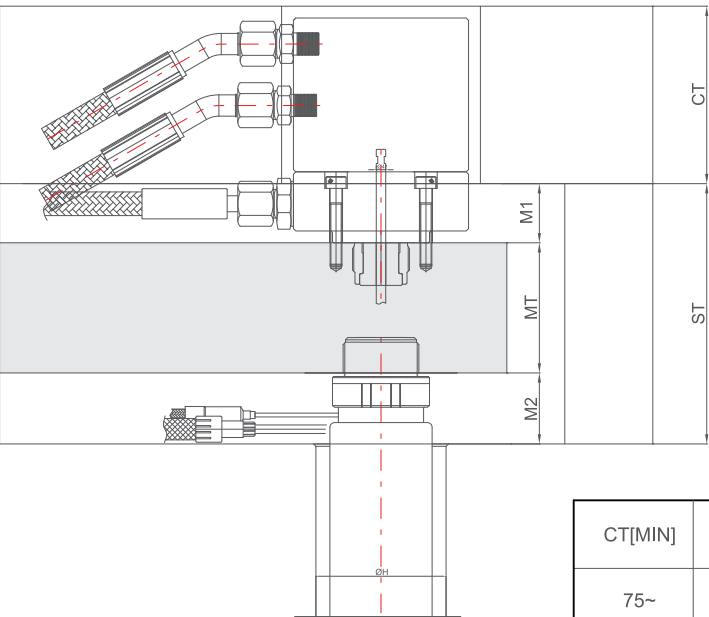
	L	Heater-1	TC-1	Heater-2	TC-2	Heater-3	TC-3
		Code	Code	Code	Code	Code	Code
TAM15 □□ 085 □□	56.90 - 66.91	HTFR36350380	NZTPIC[CA]161050				
TAM15 □□ 095 □□	66.92 - 76.93	HTTA22350480	NZTPIC[CA]161050				
TAM15 □□ 105 □□	76.94 - 86.96	HTTA22350580	NZTPIC[CA]161250				
TAM15 □□ 115 □□	86.97 - 96.98	HTTA22350680	NZTPIC[CA]161250				
TAM15 □□ 125 □□	96.99 - 107.01	HTTA22350780	NZTPIC[CA]161450				
TAM15 □□ 135 □□	107.02 - 117.03	HTTA22350880	NZTPIC[CA]161450				
TAM15 □□ 145 □□	117.04 - 127.05	HTTA22350980	NZTPIC[CA]161650				
TAM15 □□ 155 □□	127.06 - 137.08	HTTA22351080	NZTPIC[CA]161650				
TAM15 □□ 165 □□	137.09 - 147.10	HTTA22351180	NZTPIC[CA]161850				
TAM15 □□ 175 □□	147.11 - 157.13	HTTA22351280	NZTPIC[CA]161850				
TAM15 □□ 185 □□	157.14 - 167.15	HTTA22351380	NZTPIC[CA]162050				
TAM15 □□ 195 □□	167.16 - 177.18	HTTA22351480	NZTPIC[CA]162050				
TAM15 □□ 205 □□	177.19 - 187.20	HTTA22351580	NZTPIC[CA]162250				
TAM15 □□ 215 □□	187.21 - 197.22	HTTA22351680	NZTPIC[CA]162250				
TAM15 □□ 225 □□	197.23 - 207.25	HTTA22351780	NZTPIC[CA]162450				
TAM15 □□ 235 □□	207.26 - 216.99	HTTA22351880	NZTPIC[CA]162450				
TAM15 □□ 245 □□	217.00 - 236.99	HTFRAL351080	NZTPIC[CA]161450	HTGT35270048	NZTPIC[CA]162650		
TAM15 □□ 265 □□	237.00 - 256.99	HTFRAL351280	NZTPIC[CA]161450	HTGT35270048	NZTPIC[CA]162850		
TAM15 □□ 285 □□	257.00 - 276.99	HTFRAL351480	NZTPIC[CA]161650	HTGT35270048	NZTPIC[CA]163050		
TAM15 □□ 305 □□	277.00 - 296.99	HTFRAL351680	NZTPIC[CA]161650	HTGT35370048	NZTPIC[CA]163250		
TAM15 □□ 325 □□	297.00 - 316.99	HTFRAL351880	NZTPIC[CA]161850	HTGT35370048	NZTPIC[CA]163450		
TAM15 □□ 345 □□	317.00 - 336.99	HTFRAL352080	NZTPIC[CA]161850	HTGT35370048	NZTPIC[CA]163650		
TAM15 □□ 365 □□	337.00 - 356.99	HTFRAL352280	NZTPIC[CA]162050	HTGT35370048	NZTPIC[CA]163850		
TAM15 □□ 385 □□	357.00 - 376.99	HTFRAL352480	NZTPIC[CA]162050	HTGT35370048	NZTPIC[CA]164050		
TAM15 □□ 405 □□	377.00 - 396.99	HTFRAL352680	NZTPIC[CA]162250	HTGT35370048	NZTPIC[CA]164250		
TAM15 □□ 425 □□	397.00 - 416.99	HTFRAL351080	NZTPIC[CA]161450	HTSDAL351480	NZTPIC[CA]163050	HTGT35470048	NZTPIC[CA]164550
TAM15 □□ 445 □□	417.00 - 436.99	HTFRAL351280	NZTPIC[CA]161450	HTSDAL351480	NZTPIC[CA]163250	HTGT35470048	NZTPIC[CA]165050
TAM15 □□ 465 □□	437.00 - 456.99	HTFRAL351480	NZTPIC[CA]161650	HTSDAL351480	NZTPIC[CA]163450	HTGT35470048	NZTPIC[CA]165050
TAM15 □□ 485 □□	457.00 - 476.99	HTFRAL351680	NZTPIC[CA]161650	HTSDAL351480	NZTPIC[CA]163650	HTGT35470048	NZTPIC[CA]165050
TAM15 □□ 505 □□	477.00 - 496.99	HTFRAL351880	NZTPIC[CA]161850	HTSDAL351480	NZTPIC[CA]163850	HTGT35470048	NZTPIC[CA]165550
TAM15 □□ 525 □□	497.00 - 516.99	HTFRAL351080	NZTPIC[CA]161450	HTSDAL352480	NZTPIC[CA]163650	HTGT35570048	NZTPIC[CA]165550
TAM15 □□ 545 □□	517.00 - 536.99	HTFRAL351280	NZTPIC[CA]161450	HTSDAL352480	NZTPIC[CA]163850	HTGT35570048	NZTPIC[CA]166050
TAM15 □□ 565 □□	537.00 - 556.99	HTFRAL351480	NZTPIC[CA]161650	HTSDAL352480	NZTPIC[CA]164050	HTGT35570048	NZTPIC[CA]166050
TAM15 □□ 585 □□	557.00 - 576.99	HTFRAL351680	NZTPIC[CA]161650	HTSDAL352480	NZTPIC[CA]164150	HTGT35570048	NZTPIC[CA]166050
TAM15 □□ 605 □□	577.00 - 596.99	HTFRAL351880	NZTPIC[CA]161850	HTSDAL352480	NZTPIC[CA]164550	HTGT35670048	NZTPIC[CA]166550
TAM15 □□ 625 □□	597.00 - 616.99	HTFRAL352080	NZTPIC[CA]161850	HTSDAL352480	NZTPIC[CA]164550	HTGT35670048	NZTPIC[CA]166550
TAM15 □□ 645 □□	617.00 - 636.99	HTFRAL352280	NZTPIC[CA]162050	HTSDAL352480	NZTPIC[CA]165050	HTGT35670048	NZTPIC[CA]167050
TAM15 □□ 665 □□	637.00 - 656.99	HTFRAL352480	NZTPIC[CA]162050	HTSDAL352480	NZTPIC[CA]165050	HTGT35670048	NZTPIC[CA]167050
TAM15 □□ 685 □□	657.00 - 676.99	HTFRAL352680	NZTPIC[CA]162250	HTSDAL352480	NZTPIC[CA]165550	HTGT35670048	NZTPIC[CA]167050

TINA AM 15 OPEN SYSTEM



CT[MIN]	ST	MT	M1	M2	ØH
40~	100~	55	15	30	55

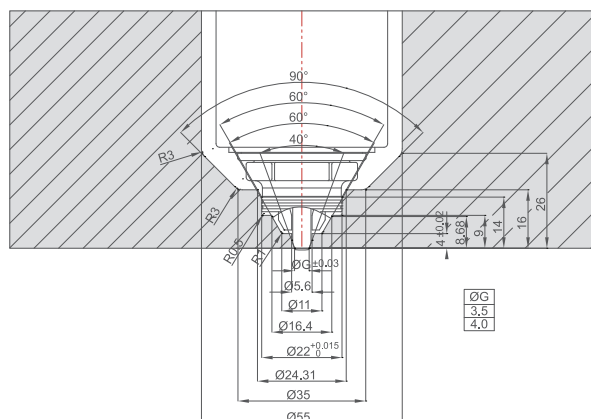
TINA AM 15 VALVE SYSTEM



CT[MIN]	ST	MT	M1	M2	ØH
75~	110~	55	25	30	55

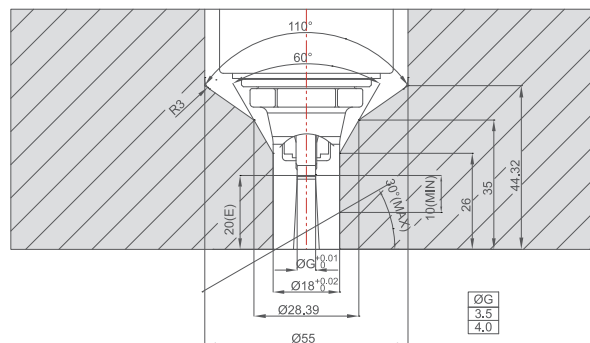
TINA AM 15 VALVE GATE

VV



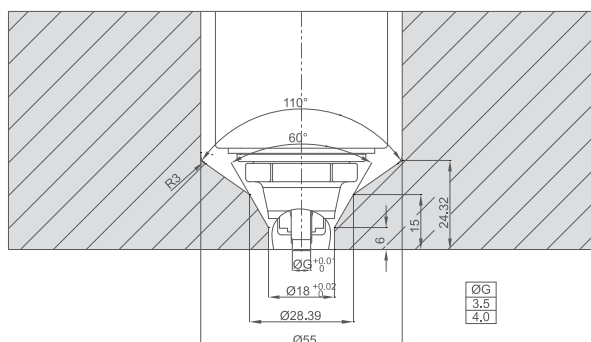
1. Standard tip doesn't include seal cap. In case of white, transparent or color change required, seal cap can be applied as an option.

TVL



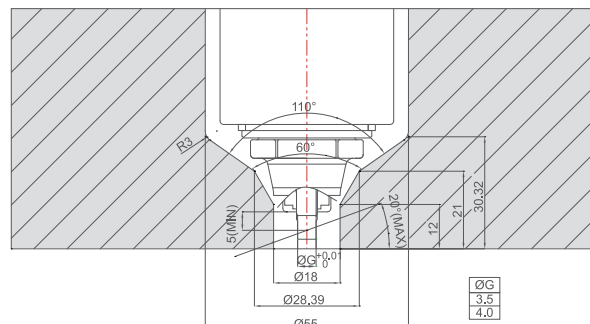
1. Standard tip doesn't include seal cap. In case of white, transparent or color change required, seal cap can be applied as an option.

TVA



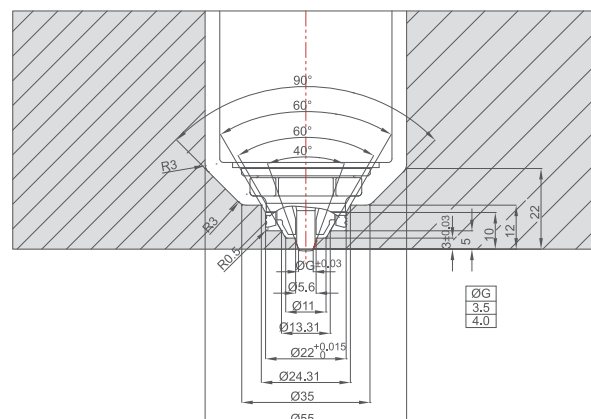
1. Standard tip doesn't include seal cap. In case of white, transparent or color change required, seal cap can be applied as an option.

TVAT



1. Maximum angle – 20°, if over 20° YUDO recommend angled system or you can contact YUDO Technician.
2. Standard tip doesn't include seal cap. In case of white, transparent or color change required, seal cap can be applied as an option.

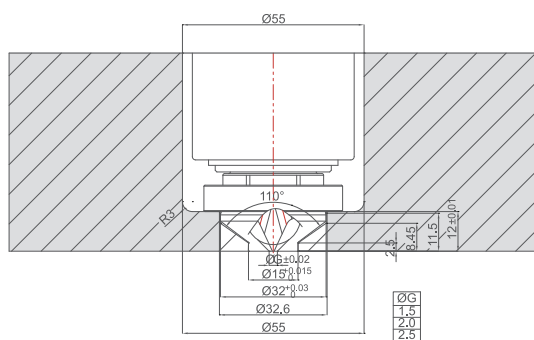
VVS



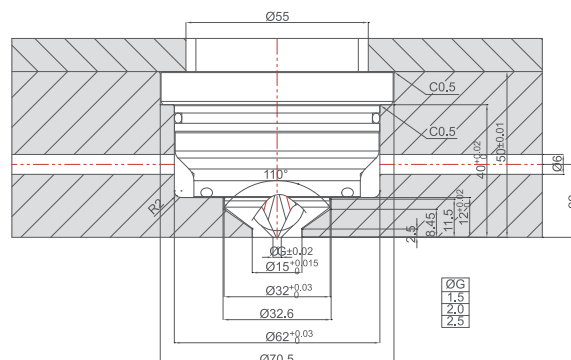
1. Standard tip doesn't include seal cap. In case of white, transparent or color change required, seal cap can be applied as an option.

TINA AM 15 OPEN GATE BUSH

CA TYPE

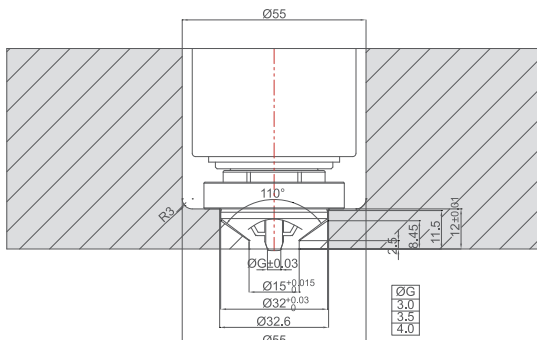


LCF TYPE

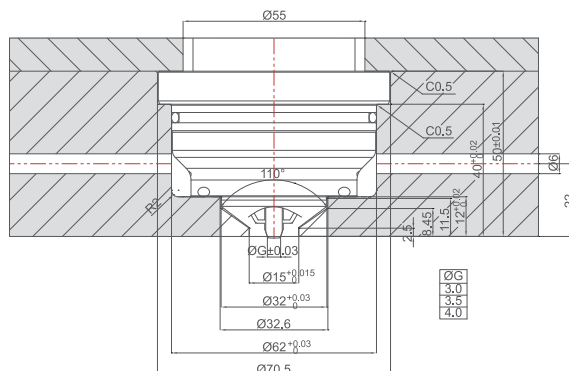


TINA AM 15 VALVE GATE BUSH

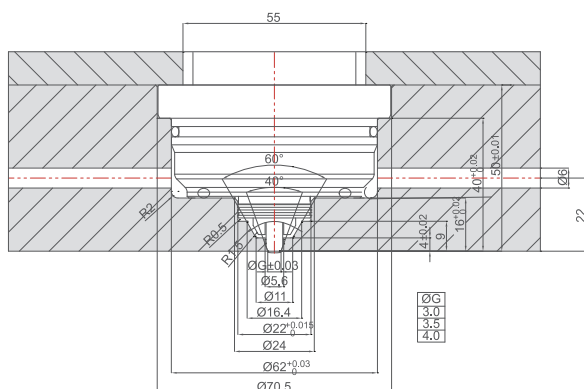
VA TYPE



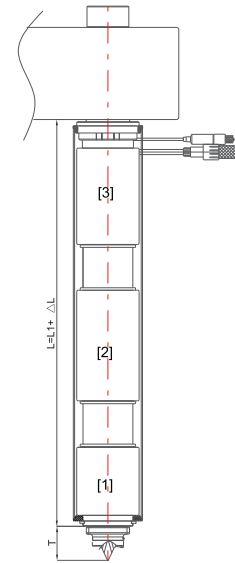
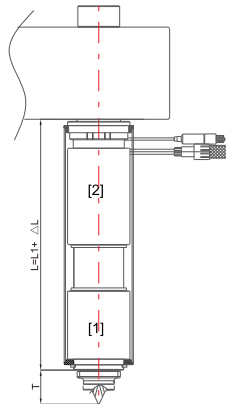
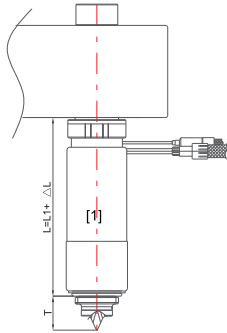
LVF TYPE



TINA AM 15 HIDDEN GATE BUSH



TINA AM 18 NOZZLE



GATE TYPE	CC/CT/TAC/TVA/VV/TOE/SOE/TLC/TVL/TVAT
T	24

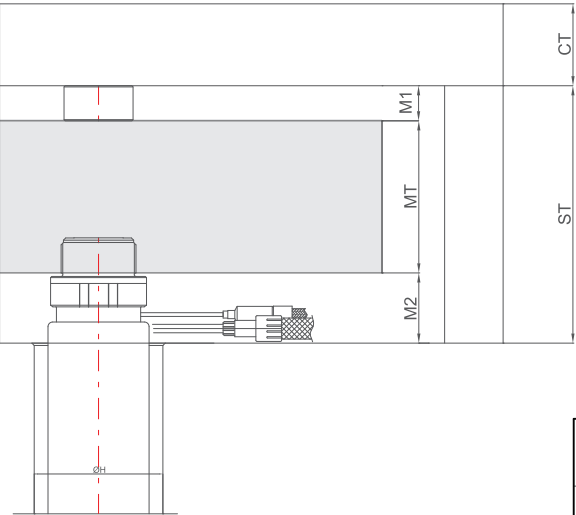
TAM18□□155□□

IC (J) , CA (K)

CC,CT,TAC,TVA,VV,TOE,SOE,TLC,TVL,TVAT

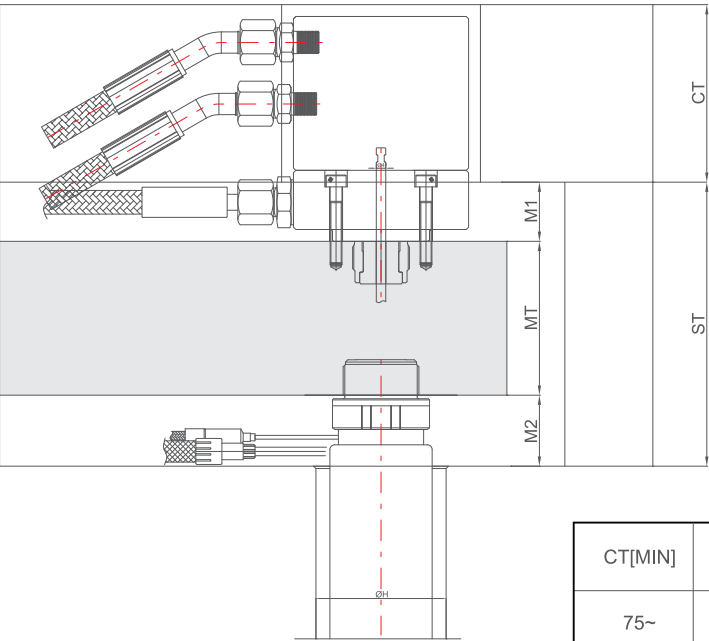
Code	L	Heater-1	TC-1	Heater-2	TC-2	Heater-3	TC-3
		Code	Code	Code	Code	Code	Code
TAM18 □□ 085 □□	56.90 - 66.91	HTFR36350380	NZTPIC[CA]161050				
TAM18 □□ 095 □□	66.92 - 76.93	HTTA22350480	NZTPIC[CA]161050				
TAM18 □□ 105 □□	76.94 - 86.96	HTTA22350580	NZTPIC[CA]161250				
TAM18 □□ 115 □□	86.97 - 96.98	HTTA22350680	NZTPIC[CA]161250				
TAM18 □□ 125 □□	96.99 - 107.01	HTTA22350780	NZTPIC[CA]161450				
TAM18 □□ 135 □□	107.02 - 117.03	HTTA22350880	NZTPIC[CA]161450				
TAM18 □□ 145 □□	117.04 - 127.05	HTTA22350980	NZTPIC[CA]161650				
TAM18 □□ 155 □□	127.06 - 137.08	HTTA22351080	NZTPIC[CA]161650				
TAM18 □□ 165 □□	137.09 - 147.10	HTTA22351180	NZTPIC[CA]161850				
TAM18 □□ 175 □□	147.11 - 157.13	HTTA22351280	NZTPIC[CA]161850				
TAM18 □□ 185 □□	157.14 - 167.15	HTTA22351380	NZTPIC[CA]162050				
TAM18 □□ 195 □□	167.16 - 177.18	HTTA22351480	NZTPIC[CA]162050				
TAM18 □□ 205 □□	177.19 - 187.20	HTTA22351580	NZTPIC[CA]162250				
TAM18 □□ 215 □□	187.21 - 197.22	HTTA22351680	NZTPIC[CA]162250				
TAM18 □□ 225 □□	197.23 - 207.25	HTTA22351780	NZTPIC[CA]162450				
TAM18 □□ 235 □□	207.26 - 216.99	HTTA22351880	NZTPIC[CA]162450				
TAM18 □□ 245 □□	217.00 - 236.99	HTFRAL351080	NZTPIC[CA]161450	HTGT35270048	NZTPIC[CA]162650		
TAM18 □□ 265 □□	237.00 - 256.99	HTFRAL351280	NZTPIC[CA]161450	HTGT35270048	NZTPIC[CA]162850		
TAM18 □□ 285 □□	257.00 - 276.99	HTFRAL351480	NZTPIC[CA]161650	HTGT35270048	NZTPIC[CA]163050		
TAM18 □□ 305 □□	277.00 - 296.99	HTFRAL351680	NZTPIC[CA]161650	HTGT35370048	NZTPIC[CA]163250		
TAM18 □□ 325 □□	297.00 - 316.99	HTFRAL351880	NZTPIC[CA]161850	HTGT35370048	NZTPIC[CA]163450		
TAM18 □□ 345 □□	317.00 - 336.99	HTFRAL352080	NZTPIC[CA]161850	HTGT35370048	NZTPIC[CA]163650		
TAM18 □□ 365 □□	337.00 - 356.99	HTFRAL352280	NZTPIC[CA]162050	HTGT35370048	NZTPIC[CA]163850		
TAM18 □□ 385 □□	357.00 - 376.99	HTFRAL352480	NZTPIC[CA]162050	HTGT35370048	NZTPIC[CA]164050		
TAM18 □□ 405 □□	377.00 - 396.99	HTFRAL352680	NZTPIC[CA]162250	HTGT35370048	NZTPIC[CA]164250		
TAM18 □□ 425 □□	397.00 - 416.99	HTFRAL351080	NZTPIC[CA]161450	HTSDAL351480	NZTPIC[CA]163050	HTGT35470048	NZTPIC[CA]164550
TAM18 □□ 445 □□	417.00 - 436.99	HTFRAL351280	NZTPIC[CA]161450	HTSDAL351480	NZTPIC[CA]163250	HTGT35470048	NZTPIC[CA]165050
TAM18 □□ 465 □□	437.00 - 456.99	HTFRAL351480	NZTPIC[CA]161650	HTSDAL351480	NZTPIC[CA]163450	HTGT35470048	NZTPIC[CA]165050
TAM18 □□ 485 □□	457.00 - 476.99	HTFRAL351680	NZTPIC[CA]161650	HTSDAL351480	NZTPIC[CA]163650	HTGT35470048	NZTPIC[CA]165050
TAM18 □□ 505 □□	477.00 - 496.99	HTFRAL351880	NZTPIC[CA]161850	HTSDAL351480	NZTPIC[CA]163850	HTGT35470048	NZTPIC[CA]165550
TAM18 □□ 525 □□	497.00 - 516.99	HTFRAL351080	NZTPIC[CA]161450	HTSDAL352480	NZTPIC[CA]163650	HTGT35570048	NZTPIC[CA]165550
TAM18 □□ 545 □□	517.00 - 536.99	HTFRAL351280	NZTPIC[CA]161450	HTSDAL352480	NZTPIC[CA]163850	HTGT35570048	NZTPIC[CA]166050
TAM18 □□ 565 □□	537.00 - 556.99	HTFRAL351480	NZTPIC[CA]161650	HTSDAL352480	NZTPIC[CA]164050	HTGT35570048	NZTPIC[CA]166050
TAM18 □□ 585 □□	557.00 - 576.99	HTFRAL351680	NZTPIC[CA]161650	HTSDAL352480	NZTPIC[CA]164150	HTGT35570048	NZTPIC[CA]166050
TAM18 □□ 605 □□	577.00 - 596.99	HTFRAL351880	NZTPIC[CA]161850	HTSDAL352480	NZTPIC[CA]164550	HTGT35670048	NZTPIC[CA]166550
TAM18 □□ 625 □□	597.00 - 616.99	HTFRAL352080	NZTPIC[CA]161850	HTSDAL352480	NZTPIC[CA]164550	HTGT35670048	NZTPIC[CA]166550
TAM18 □□ 645 □□	617.00 - 636.99	HTFRAL352280	NZTPIC[CA]162050	HTSDAL352480	NZTPIC[CA]165050	HTGT35670048	NZTPIC[CA]167050
TAM18 □□ 665 □□	637.00 - 656.99	HTFRAL352480	NZTPIC[CA]162050	HTSDAL352480	NZTPIC[CA]165050	HTGT35670048	NZTPIC[CA]167050
TAM18 □□ 685 □□	657.00 - 676.99	HTFRAL352680	NZTPIC[CA]162250	HTSDAL352480	NZTPIC[CA]165550	HTGT35670048	NZTPIC[CA]167050

TINA AM 18 OPEN SYSTEM



CT[MIN]	ST	MT	M1	M2	ØH
40~	110~	65	15	30	55

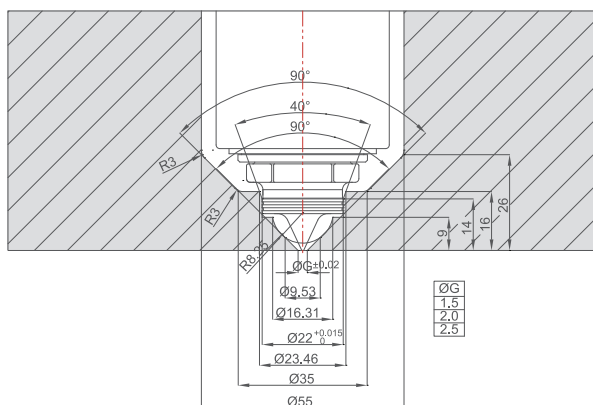
TINA AM 18 VALVE SYSTEM



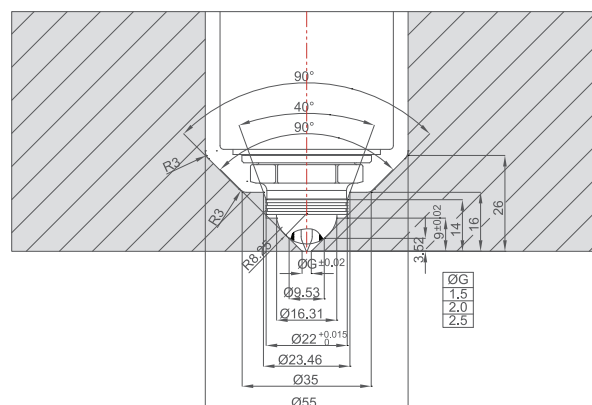
CT[MIN]	ST	MT	M1	M2	ØH
75~	120~	65	25	30	55

TINA AM 18 OPEN GATE

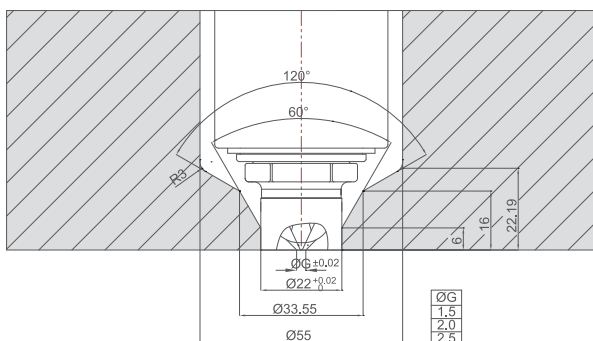
CC



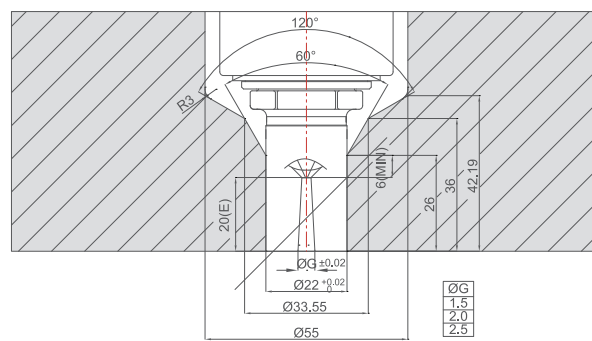
CT



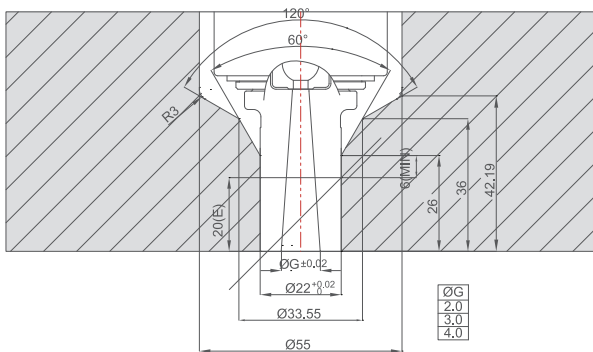
TAC



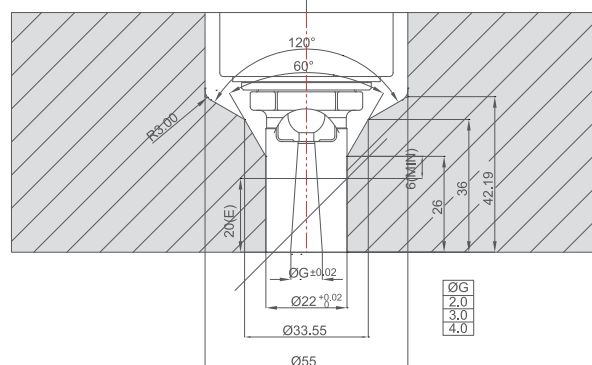
TLC



TOE

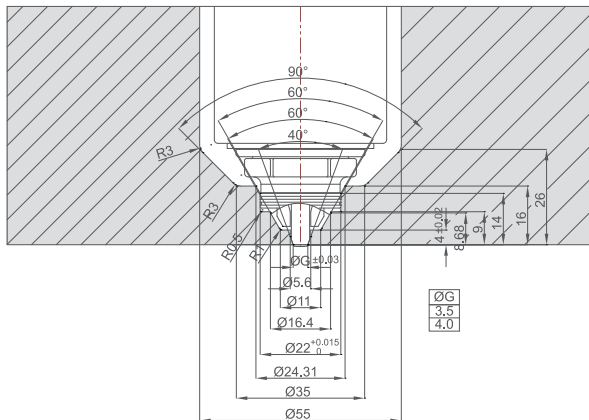


SOE



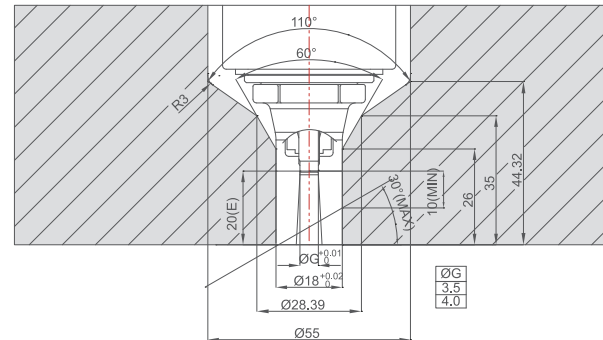
TINA AM 18 VALVE GATE

VV



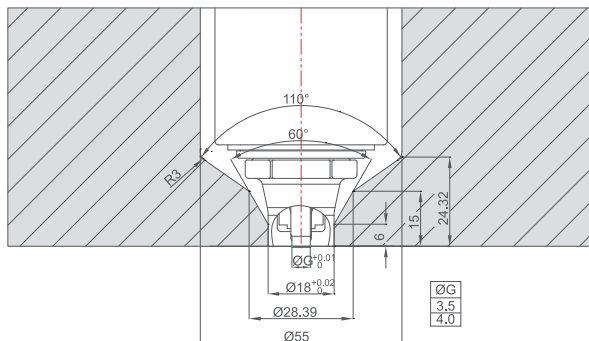
1. Standard tip doesn't include seal cap. In case of white, transparent or color change required, seal cap can be applied as an option.

TVL



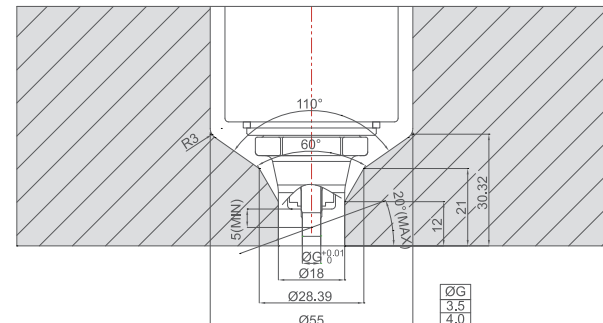
1. Standard tip doesn't include seal cap. In case of white, transparent or color change required, seal cap can be applied as an option.

TVA



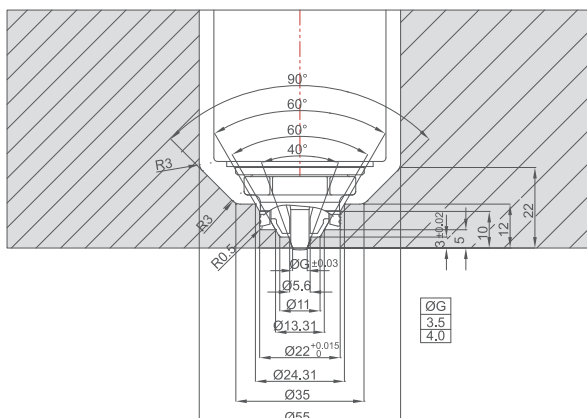
1. Standard tip doesn't include seal cap. In case of white, transparent or color change required, seal cap can be applied as an option.

TVAT



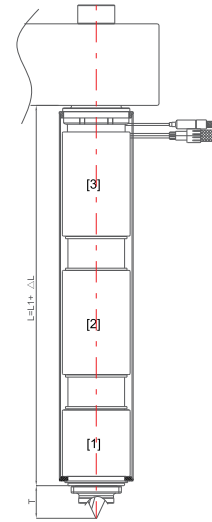
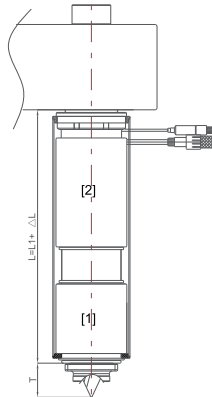
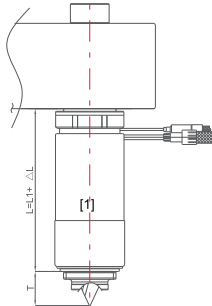
1. Maximum angle – 20°, if over 20° YUDO recommends an angled system or you can contact YUDO Technician.
2. Standard tip doesn't include seal cap. In case of white, transparent or color change required, seal cap can be applied as an option.

VVS



1. Standard tip doesn't include seal cap. In case of white, transparent or color change required, seal cap can be applied as an option.

TINA AM 22 NOZZLE



GATE TYPE	CC/CT/TAC/TVA/VV/TOE/SOE/TLC/TVL/TVAT
T	26

TINA AM 22

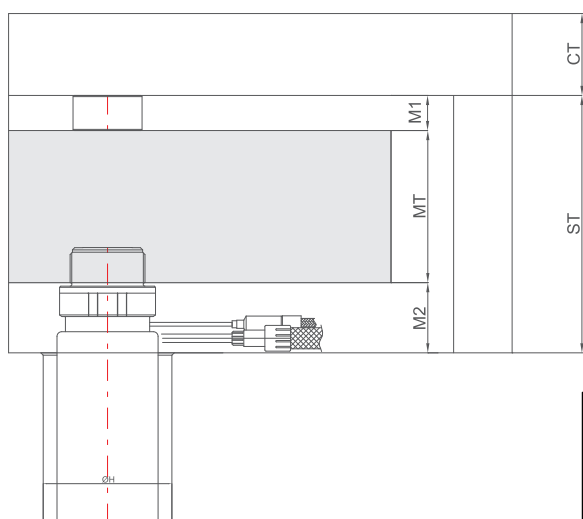
TAM22□□155□□

IC (J) , CA (K)

CC,CT,TAC,TVA,VV,TOE,SOE,TLC,TVL,TVAT

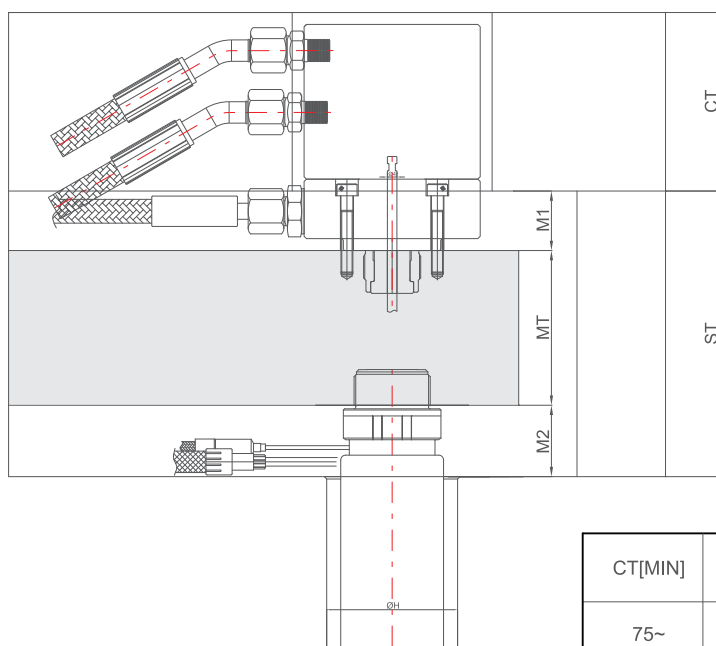
Code	L	Heater-1	TC-1	Heater-2	TC-2	Heater-3	TC-3
		Code	Code	Code	Code	Code	Code
TAM22□□ 105□□	72.43 ~ 82.45	HTTA22450530	NZTPIC[CA]161250				
TAM22□□ 115□□	82.46 ~ 92.47	HTTA22450630	NZTPIC[CA]161450				
TAM22□□ 125□□	92.48 ~ 102.50	HTTA22450730	NZTPIC[CA]161450				
TAM22□□ 135□□	102.51 ~ 112.52	HTTA22450830	NZTPIC[CA]161650				
TAM22□□ 145□□	112.53 ~ 122.54	HTTA22450930	NZTPIC[CA]161650				
TAM22□□ 155□□	122.55 ~ 132.57	HTTA22451030	NZTPIC[CA]161850				
TAM22□□ 165□□	132.58 ~ 142.59	HTTA22451130	NZTPIC[CA]161850				
TAM22□□ 175□□	142.60 ~ 152.62	HTTA22451230	NZTPIC[CA]162050				
TAM22□□ 185□□	152.63 ~ 162.64	HTTA22451330	NZTPIC[CA]162050				
TAM22□□ 195□□	162.65 ~ 172.66	HTTA22451430	NZTPIC[CA]162250				
TAM22□□ 205□□	172.67 ~ 182.69	HTTA22451530	NZTPIC[CA]162250				
TAM22□□ 215□□	182.70 ~ 192.71	HTTA22451630	NZTPIC[CA]162450				
TAM22□□ 225□□	192.72 ~ 202.99	HTTA22451730	NZTPIC[CA]162450				
TAM22□□ 235□□	203.00 ~ 222.99	HTFRAL450930	NZTPIC[CA]161450	HTGT45270053	NZTPIC[CA]162650		
TAM22□□ 255□□	223.00 ~ 242.99	HTFRAL451130	NZTPIC[CA]161450	HTGT45270053	NZTPIC[CA]162850		
TAM22□□ 275□□	243.00 ~ 262.99	HTFRAL451330	NZTPIC[CA]161650	HTGT45270053	NZTPIC[CA]163050		
TAM22□□ 295□□	263.00 ~ 282.99	HTFRAL451530	NZTPIC[CA]161650	HTGT45270053	NZTPIC[CA]163250		
TAM22□□ 315□□	283.00 ~ 302.99	HTFRAL451730	NZTPIC[CA]161850	HTGT45270053	NZTPIC[CA]163450		
TAM22□□ 335□□	303.00 ~ 322.99	HTFRAL451930	NZTPIC[CA]161850	HTGT45370053	NZTPIC[CA]163650		
TAM22□□ 355□□	323.00 ~ 342.99	HTFRAL452130	NZTPIC[CA]162050	HTGT45370053	NZTPIC[CA]163850		
TAM22□□ 375□□	343.00 ~ 362.99	HTFRAL452330	NZTPIC[CA]162050	HTGT45370053	NZTPIC[CA]164050		
TAM22□□ 395□□	363.00 ~ 382.99	HTFRAL452530	NZTPIC[CA]162250	HTGT45370053	NZTPIC[CA]164250		
TAM22□□ 415□□	383.00 ~ 402.99	HTFRAL450930	NZTPIC[CA]161450	HTSDAL452530	NZTPIC[CA]163050	HTGT45370053	NZTPIC[CA]164550
TAM22□□ 435□□	403.00 ~ 422.99	HTFRAL451130	NZTPIC[CA]161450	HTSDAL452530	NZTPIC[CA]163250	HTGT45470053	NZTPIC[CA]164550
TAM22□□ 455□□	423.00 ~ 442.99	HTFRAL451330	NZTPIC[CA]161650	HTSDAL452530	NZTPIC[CA]163450	HTGT45470053	NZTPIC[CA]165050
TAM22□□ 475□□	443.00 ~ 462.99	HTFRAL451530	NZTPIC[CA]161650	HTSDAL452530	NZTPIC[CA]163650	HTGT45470053	NZTPIC[CA]165050
TAM22□□ 495□□	463.00 ~ 482.99	HTFRAL451730	NZTPIC[CA]161850	HTSDAL452530	NZTPIC[CA]163850	HTGT45470053	NZTPIC[CA]165050
TAM22□□ 515□□	483.00 ~ 502.99	HTFRAL451930	NZTPIC[CA]161850	HTSDAL452530	NZTPIC[CA]164050	HTGT45470053	NZTPIC[CA]165550
TAM22□□ 535□□	503.00 ~ 522.99	HTFRAL452130	NZTPIC[CA]162050	HTSDAL452530	NZTPIC[CA]164250	HTGT45570053	NZTPIC[CA]165550
TAM22□□ 555□□	523.00 ~ 542.99	HTFRAL451330	NZTPIC[CA]161650	HTSDAL452530	NZTPIC[CA]163850	HTGT45570053	NZTPIC[CA]166050
TAM22□□ 575□□	543.00 ~ 562.99	HTFRAL451530	NZTPIC[CA]161650	HTSDAL452530	NZTPIC[CA]164050	HTGT45570053	NZTPIC[CA]166050
TAM22□□ 595□□	563.00 ~ 582.99	HTFRAL451730	NZTPIC[CA]161850	HTSDAL452530	NZTPIC[CA]164550	HTGT45570053	NZTPIC[CA]166050
TAM22□□ 615□□	583.00 ~ 602.99	HTFRAL451930	NZTPIC[CA]161850	HTSDAL452530	NZTPIC[CA]164550	HTGT45570053	NZTPIC[CA]166550
TAM22□□ 635□□	603.00 ~ 622.99	HTFRAL452130	NZTPIC[CA]162050	HTSDAL452530	NZTPIC[CA]165050	HTGT45770053	NZTPIC[CA]166550
TAM22□□ 655□□	623.00 ~ 642.99	HTFRAL452330	NZTPIC[CA]162050	HTSDAL452530	NZTPIC[CA]165050	HTGT45770053	NZTPIC[CA]167050
TAM22□□ 675□□	643.00 ~ 662.99	HTFRAL452530	NZTPIC[CA]162250	HTSDAL452530	NZTPIC[CA]165050	HTGT45770053	NZTPIC[CA]167050
TAM22□□ 695□□	663.00 ~ 682.99	HTFRAL452130	NZTPIC[CA]162050	HTSDAL453130	NZTPIC[CA]165050	HTGT45770053	NZTPIC[CA]167050
TAM22□□ 715□□	683.00 ~ 702.99	HTFRAL452330	NZTPIC[CA]162050	HTSDAL453130	NZTPIC[CA]165550	HTGT45770053	NZTPIC[CA]167550
TAM22□□ 735□□	703.00 ~ 722.99	HTFRAL452530	NZTPIC[CA]162250	HTSDAL453130	NZTPIC[CA]165550	HTGT45770053	NZTPIC[CA]167550
TAM22□□ 755□□	723.00 ~ 742.99	HTFRAL452730	NZTPIC[CA]162250	HTSDAL453130	NZTPIC[CA]165550	HTGT45770053	NZTPIC[CA]168050
TAM22□□ 775□□	743.00 ~ 762.99	HTFRAL452930	NZTPIC[CA]162450	HTSDAL453130	NZTPIC[CA]166050	HTGT45770053	NZTPIC[CA]168050
TAM22□□ 795□□	763.00 ~ 782.99	HTFRAL453130	NZTPIC[CA]162450	HTSDAL453130	NZTPIC[CA]166050	HTGT45770053	NZTPIC[CA]168050

TINA AM 22 OPEN SYSTEM



CT[MIN]	ST	MT	M1	M2	ØH
40~	110~	65	15	30	65

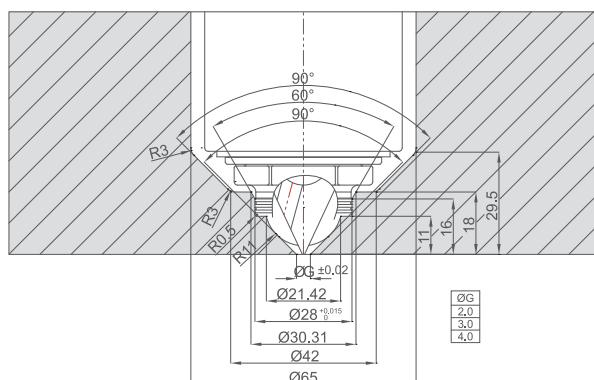
TINA AM 22 VALVE SYSTEM



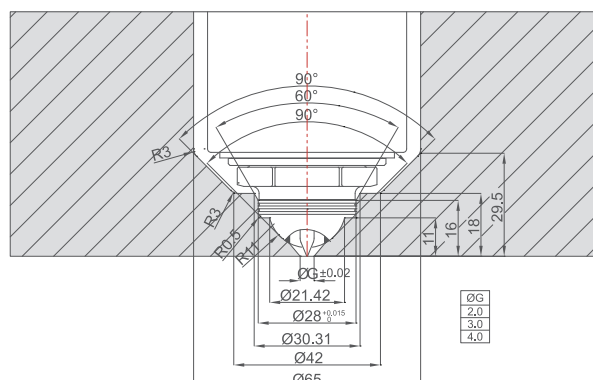
CT[MIN]	ST	MT	M1	M2	ØH
75~	120~	65	25	30	65

TINA AM 22 OPEN GATE

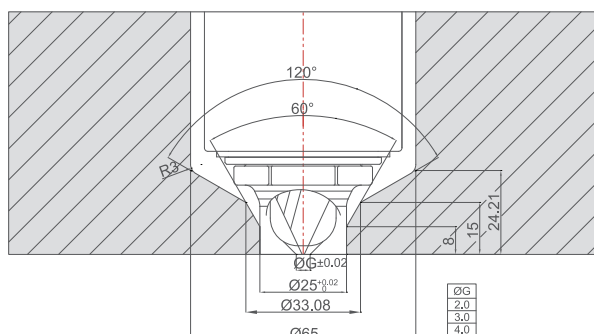
CC



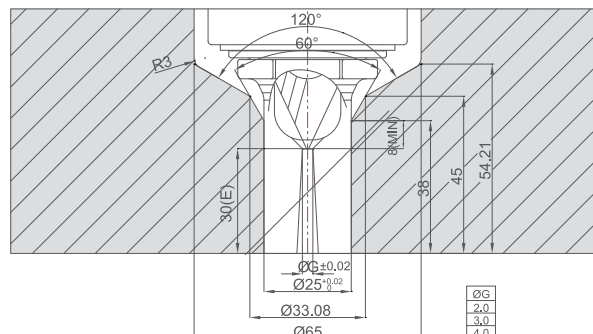
CT



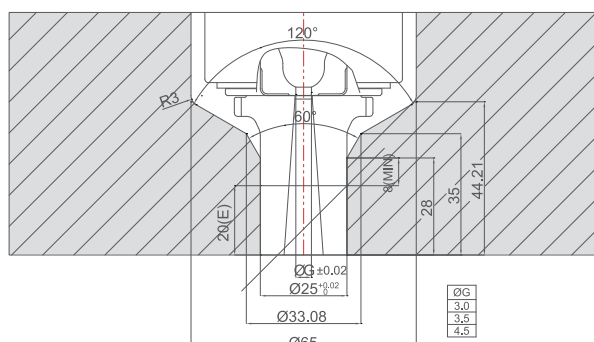
TAC



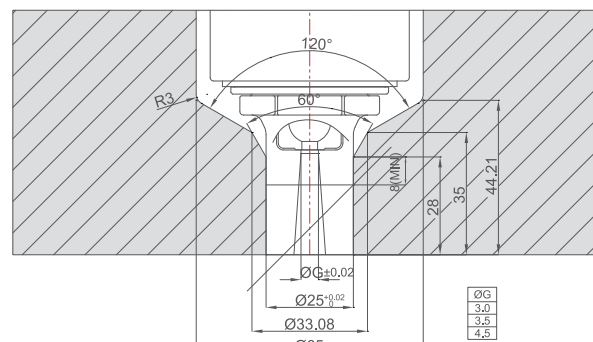
TLC



TOE

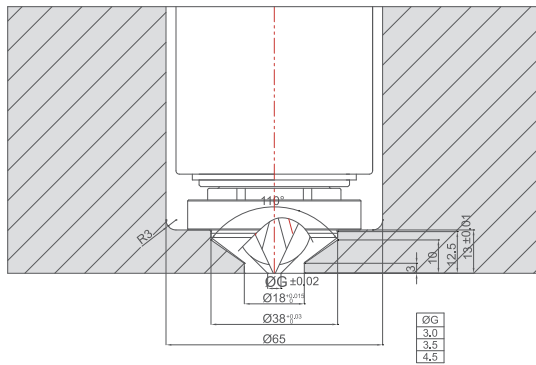


SOE

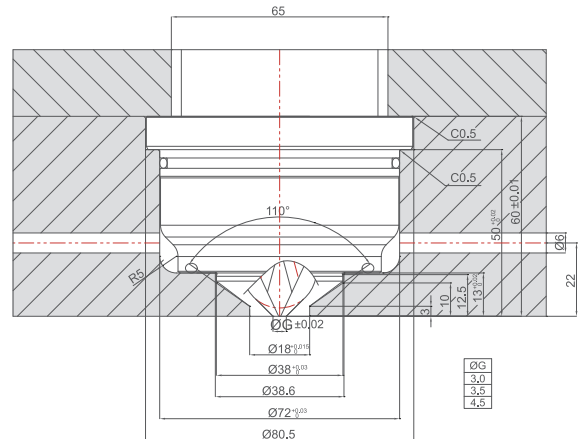


TINA AM 22 OPEN GATE BUSH

CATYPE

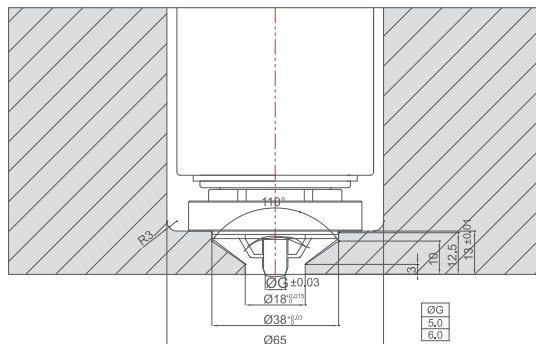


LCF TYPE

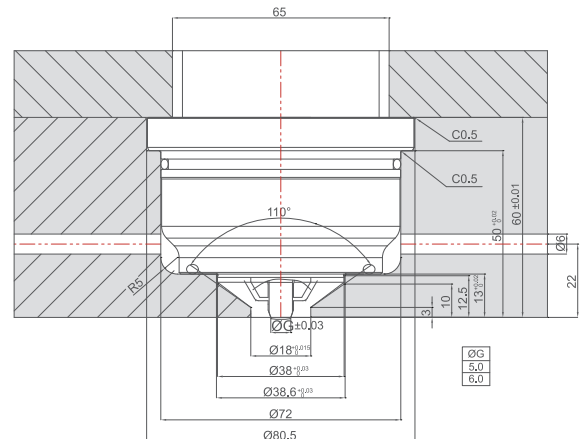


TINA AM 22 VALVE GATE BUSH

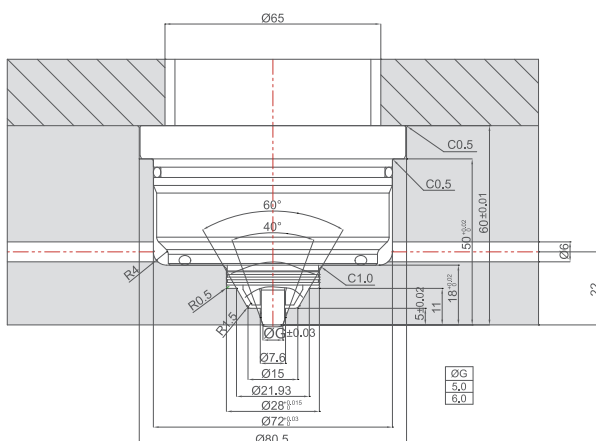
VA TYPE



LVF TYPE

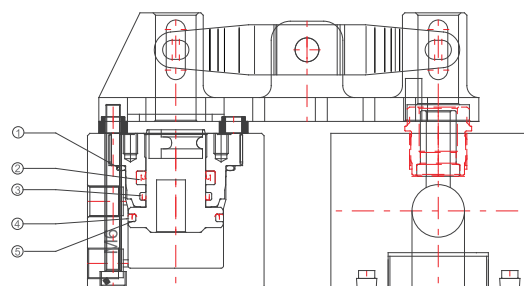
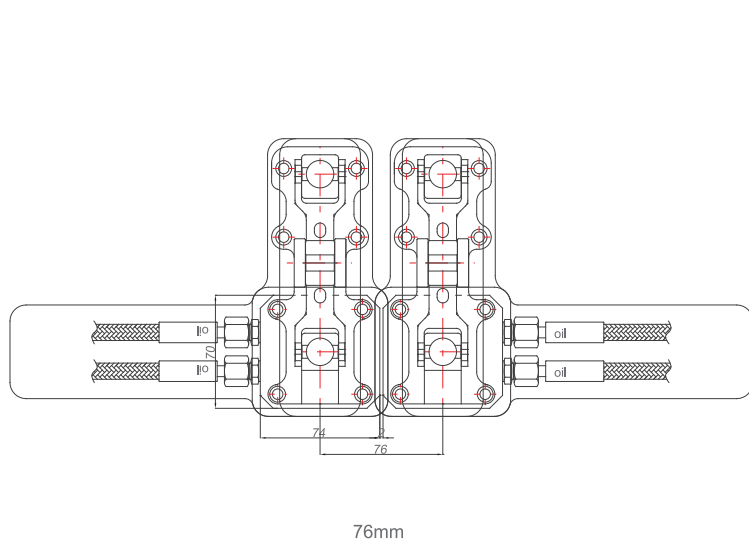


TINA AM 22 HIDDEN GATE BUSH



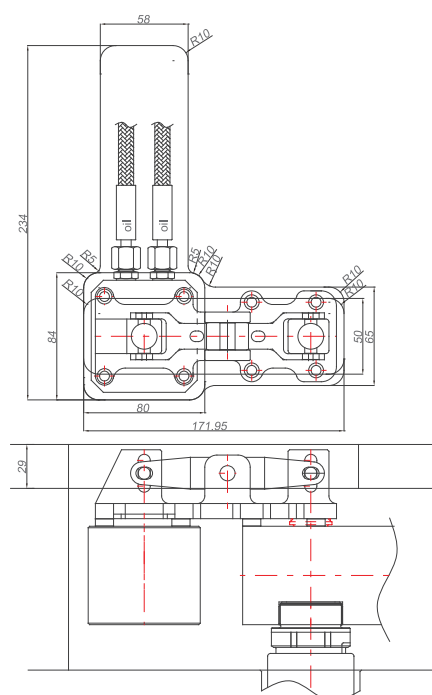
Side Cylinder Hydraulic

Minimum Pitch and O-ring reference



1	ACRRV261310
2	CU0276K0
3	GR4300250
4	ACRGSO460400
5	ACRRV261240

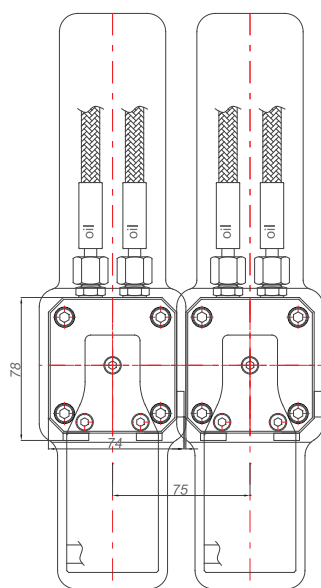
Machining Demension



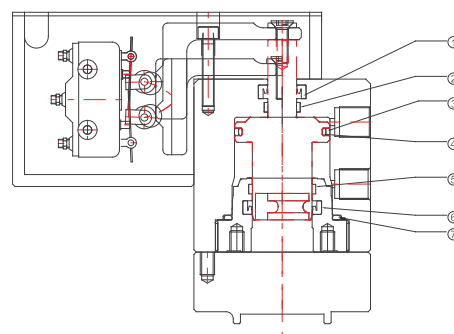
Reference	
Media	Oil
Pressure	40bar~60bar
Velocity	3 L/min
Reaction Time	0.5s
Pin Stroke	15mm
Nipple Typ	G1/4

Position Indicating Option Cyliner

Minimum Pitch and O-ring reference

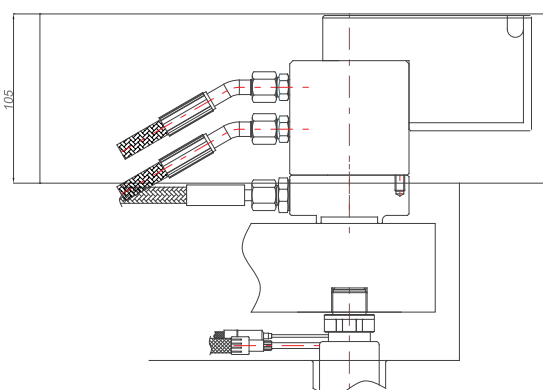
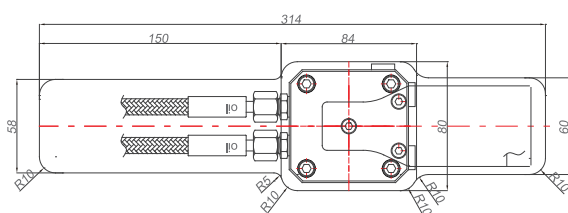


75mm



1	CU3248K0
2	GR4300120
3	ACRGSO460400
4	ACRRAV261240
5	GR4300250
6	CU0276K0
7	ACRRAV261310

Machining Dimension



Reference	
Media	Oil
Pressure	40bar~60bar
Velocity	3 L/min
Reaction Time	0.5s
Pin Stroke	15mm
Nipple Typ	G1/4

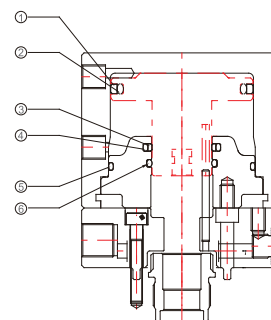
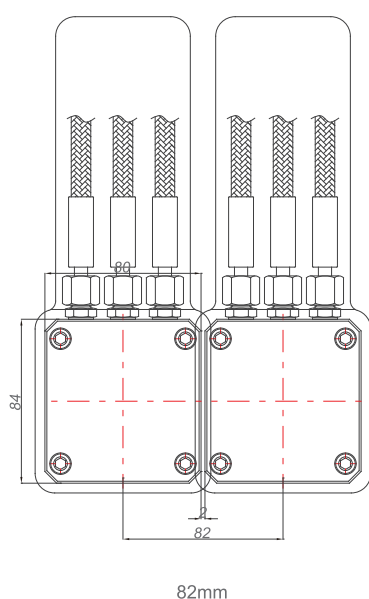
Cooling Reference	
Media	Cooling water
Velocity	6 L/min
Temperature	30~60°C
Nipple Type	G1/4

- YUDO recommend to keep cooling on cylinder cooling pad 15 minute after injection to protect O-rings on cylinder.

PWP 60 Pneumatic Cylinder

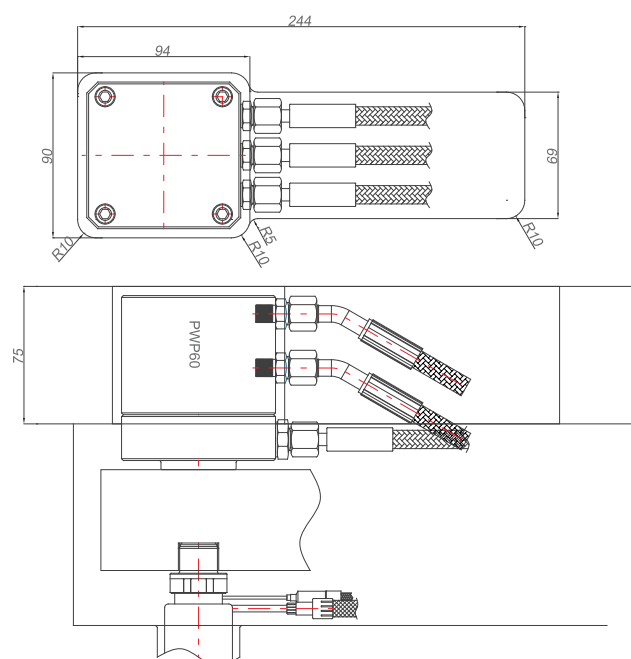
PWP 60

Minimum Pitch and O-ring reference



1	ACRGSO440600
2	ACRRV352250
3	ACRGHO450250
4	ACRRV261220
5	ACRRV261400
6	ACRRV261200

Machining Dimension



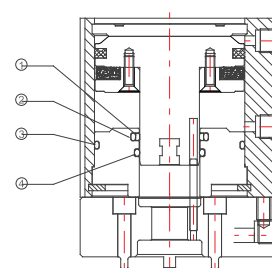
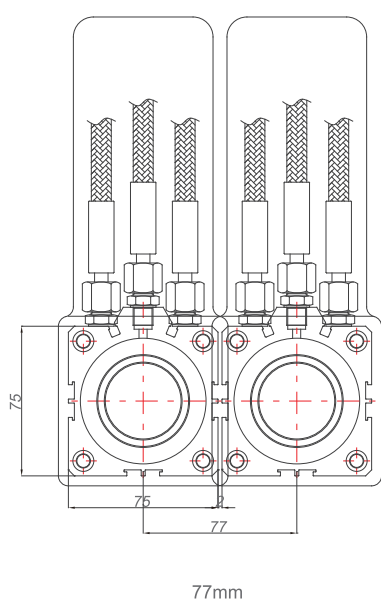
Reference	
Media	Air
Pressure	8bar~10bar
Velocity	20 L/min
Reaction Time	0.5s
Pin Stroke	15mm
Nipple Typ	G1/8

Cooling Reference	
Media	Cooling water
Velocity	6 L/min
Temperature	30~60°C
Nipple Type	G1/4

- YUDO recommend to keep cooling on cylinder cooling pad 15 minute after injection to protect O-rings on cylinder.

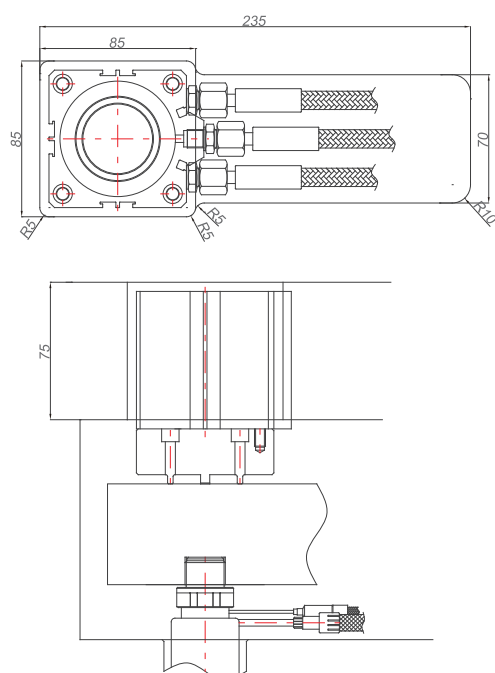
Piston Indicating Option (Pneumatic)

Minimum Pitch and O-ring reference



1	ACRGHO450250
2	ACRRAV261220
3	ACRRAV261410
4	ACRRAV261200

Machining Demension



Reference	
Media	Air
Pressure	8bar~10bar
Velocity	20 L/min
Reaction Time	0.5s
Pin Stroke	15mm
Nipple Typ	G1/4

Cooling Reference	
Media	Cooling water
Velocity	6 L/min
Temperature	30~60°C
Nipple Type	G1/8

- YUDO recommend to keep cooling on cylinder cooling pad 15 minute after injection to protect O-rings on cylinder.

